



www.ykkap.com



YWW 60 TU

Thermally Broken Window Wall
with Optional Slab Edge Cover

The **YWW 60 TU** is a 6-inch deep window wall glazing system designed for use in various multi-story applications. It includes an innovative slab edge cover that yields the beauty and appearance of a curtain wall application. The glass plane is set to the front to maximize energy efficiency. The thermal performance is further enhanced by YKK AP's ThermaBond Plus® thermal break technology.

- Inside, Outside and SSG Glazing Options
- SSG: 2-Sided Field & 4-Sided Shop/Unitized
- 1" Glazing Standard with 1/4" Infill Option
- Thermally Broken by ThermaBond Plus® Pour and De-Bridged Urethane Barriers
- Punched Opening or Slab Edge Floor-to-Floor
- Tubular Mullions & Head Receptor Options
- Integrates with our YKK AP Entrances

Configuration:

Glazing	Glass Setting	Installation
Outside, Inside and SSG	Front Set	Screw Spline

Thermal Values:

U-Factor:	Values as low as 0.30*
CRF:	Minimum 69 frame and 67 glass

*Based on NFRC 100. Lower values may be achieved through further simulation.

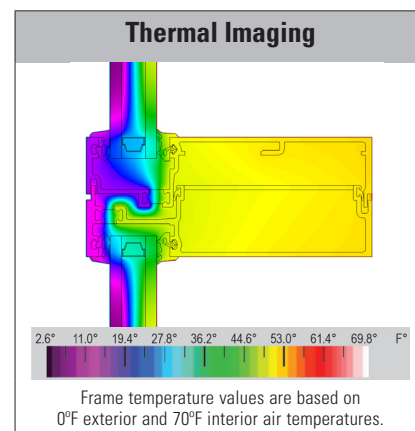


YWW 60 TU SPECS		
Base Depth	6" (without Slab Edge Cover)	
Sightline	2-1/4"	
Config	Outside, Inside or SSG Glazed / Front Set	
Tested Glass	1" IGU with Low-E (C.O.G. U-Factor: 0.29)	
Test	Results	Standards
Air Infiltration	0.06 CFM/FT ² (1.10 m ³ /h·m ²) @ 6.24 PSF (299 Pa)	ASTM E 283
Water Infiltration	Static: 12 PSF (575 Pa) Dynamic: 12 PSF (575 Pa)	ASTM E 331 AAMA 501
Acoustical (1" IGU)	Captured Std STC: 31 Std OITC: 25	ASTM E 90 ASTM E 1425 AAMA 1801
	SSG Std STC: 32 Std OITC: 26	
	Captured Lam STC: 36 Lam OITC: 31	
	SSG Lam STC: 36 Lam OITC: 31	

Thermal Performance									
Mullion Depth (1" IGU)	U-Factor - BTU/hr·ft ² ·°F						CRF		
Pre-Glazed Out/In	0.43	0.42	0.40	0.38	0.37	0.35	69	67	
Pre-Glazed SSG	0.38	0.36	0.35	0.33	0.31	0.30	74	69	
Field Glazed Out/In	0.41	0.39	0.38	0.36	0.34	0.33	74	68	
Center of Glass	0.30	0.28	0.26	0.24	0.22	0.20	Frame	Glass	
NFRC 100/200/500 & AAMA 507							AAMA 1503		

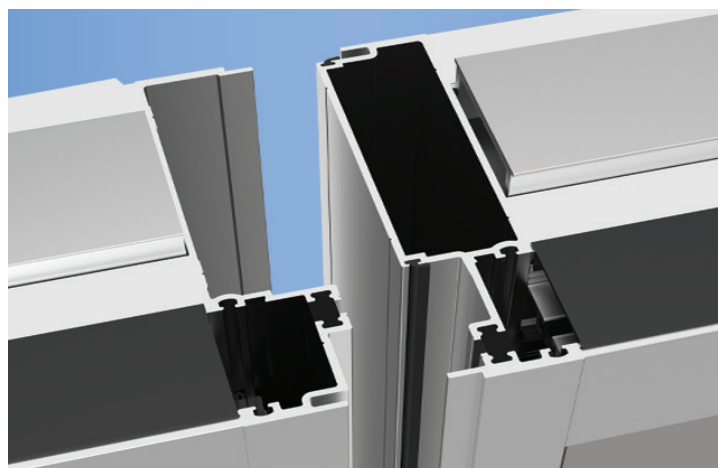
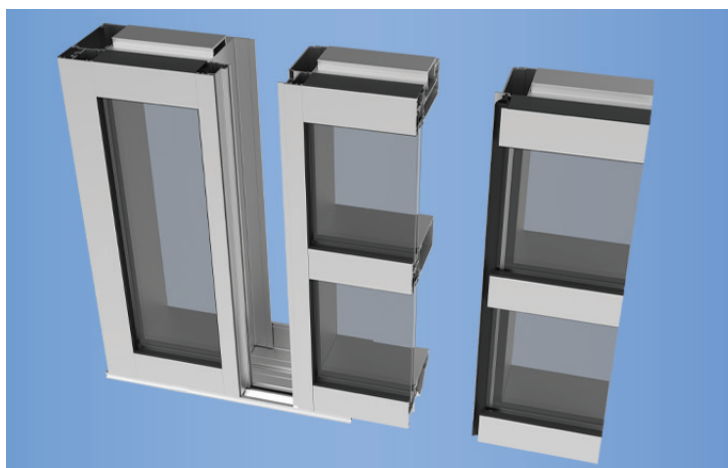
Finish Options	
Type	Standard
Factory Anodized	AAMA 612
Organic Paints	AAMA 2604 AAMA 2605

Various System Options
Expansion Mullion, Slab Edge and Covers, Head Receptors, 90° and 135° Outside and Inside Mullions, Door Jambes and Transoms



Unitized Framework

The YWW 60 TU has a Pre-Glazed/Unitized option. By splitting the vertical mullions into male-female pieces, units can be pre-assembled off the job site and fitted together in sections on the job site. This makes installation quicker, and less materials taking up space out in the field.



Thermally Broken

While the pour and de-bridge process economically delivers the desired level of energy conservation it has an inherent problem as the polyurethane material does not adhere well to the aluminum.

ThermaBond Plus® from YKK AP that greatly improves the adhesion of the polyurethane material to the aluminum extrusion. Combining science and technology, ThermaBond Plus® process resolves the problem of adhesion and the resulting dry shrinkage associated with typical poured and de-bridged systems.



Additional information including CAD details, CSI specs, test reports and installation instructions are found on the Product Guide by clicking this link or visiting www.ykkap.com/commercial/productguide