



YKK
ap®

ABOUT YKK AP AMERICA

YKK AP America Inc. is a leading manufacturer of highly engineered commercial façade systems for specifiers and glazing contractors seeking smart design, quality engineering and exceptional customer support. With the support of our dedicated employees, we combine vertically controlled manufacturing and thoughtful design to provide quality building solutions that meet your performance, aesthetic and sustainability needs.

YKK AP was first incorporated from Japan over to the United States on April 24, 1991. Just over a year later, we opened our commercial plant in Dublin, GA in September of 1992. Over the past 30 years, we have expanded the plant's capabilities, and currently still cast, extrude, manufacture, finish and ship our commercial products at the same facility to this very day.

Every day, we strive to offer exceptional value and a positive experience for customers, employees and communities.



*Build a
Better Society*





PRODUCTS

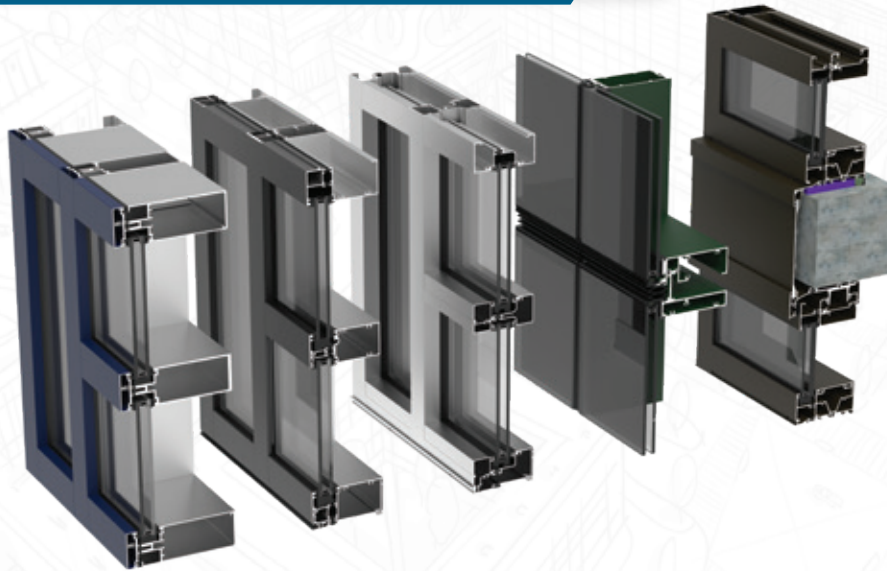
A photograph of a modern building at dusk. The building features a glass curtain wall and a cantilevered upper section supported by columns. The sky is a clear blue. The building's facade is composed of glass panels and a series of horizontal, slanted metal louvers. The cantilevered section is illuminated from below, creating a warm orange glow. The columns supporting the cantilever are also illuminated from below.

YUW 750 XT
Unitized Curtain Wall

“ We combine **experience,
proprietary processes and
stringent testing protocols all
in our **world-class commercial**
production facility. ”**

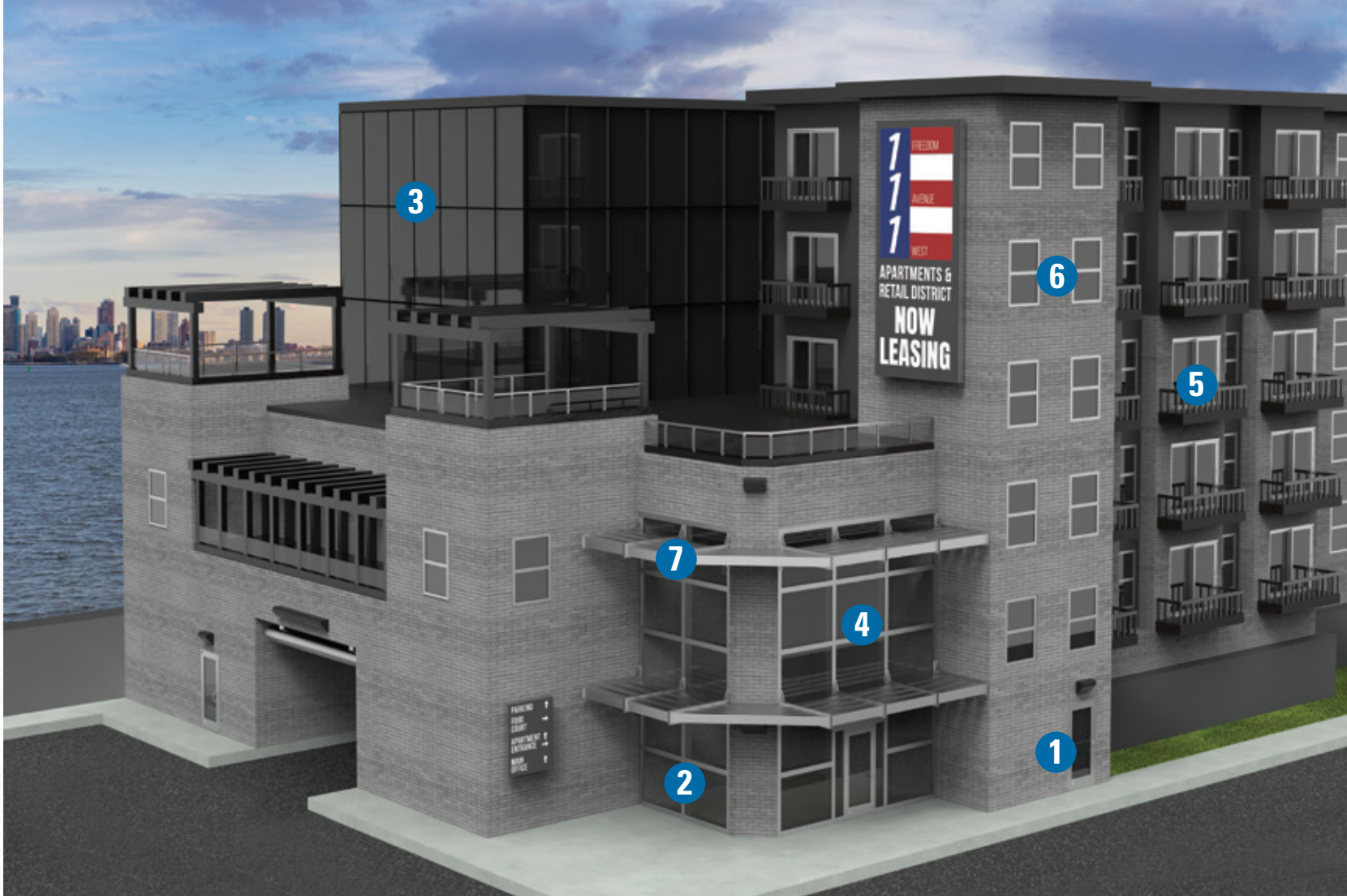
Manufacturing is in our DNA.

PRODUCT PORTFOLIO



We strive to be the most preferred manufacturer of commercial façade solutions for the glazing industry by offering a diverse portfolio of consistent, well-designed, energy-efficient systems and accessories. Our product portfolio covers your fenestration needs from curtain wall to architectural windows and everything in between...helping bring your project to life.

- 1 ENTRANCES
- 2 STOREFRONT
- 3 CURTAIN WALL
- 4 WINDOW WALL
- 5 BALCONY DOORS
- 6 WINDOWS
- 7 SUN CONTROL



3

6

5

1

4

7

2

| System | Description |
|---|--|
| Entrances | |
| Standard Entrances | |
| 20D/35D/50D | 2" Narrow, 3-1/2" Medium and 5" Wide Stile |
| Other Entrances | |
| 40M/50M | 4" Medium and 5" Wide Stile, Monumental |
| 25FD | 2-1/2" Narrow Stile Flush Panel with Aluminum or FRP Skin |
| enerGfacade® Series | |
| 25T/35T/50T | 2-1/2" Narrow, 3-1/2" Medium and 5" Wide Stile, Thermally Broken |
| ProTek® Series | |
| 35H/50H | 3-1/2" Medium and 5" Wide Stile, Impact Resistant |
| 35HL/50HL | 3-1/2" Medium and 5" Wide Stile, Impact Resistant, Low Pressures |
| Storefront | |
| YES 45 Series (4-1/2" Depth) | |
| 45 FS | Flush Glazed with Standard Glass |
| 45 FI | Flush Glazed with Insulating Glass |
| 45 TU | Center or Front Set, Thermally Broken |
| enerGfacade® YES 45 (4-1/2" Depth) | |
| 45 XT | Center Set, Advanced Thermal |
| ProTek® YHS 50 Series (5" Depth) | |
| 50 FS | Impact Resistant, Flush Glazed with Standard Glass |
| 50 FI | Impact Resistant, Flush Glazed with Insulating Glass |
| 50 TU | Impact Resistant, Thermally Broken |

| System | Description |
|---|---|
| YES 60 Series (6" Depth) | |
| 60 FI | Offset, Flush Glazed with Insulating Glass |
| 60 TU | Offset, Thermally Broken |
| enerGfacade® YES 60 (6" Depth) | |
| 60 XT | Offset, Advanced Thermal |
| Curtain Wall | |
| YCW 750 Series (7-1/2" Depth) | |
| 750 IG | Inside Glazed, Standard or Insulating Glass |
| 750 OG | Outside Glazed, Standard or Insulating Glass |
| 750 OGP | Outside Glazed, Thermally Broken with Polyamide Pressure Plates |
| 750 SSG | Structural Silicone Glazed, Field/Stick or Shop/Cassette |
| YUW 750 Unitized Series (7-1/2" Depth) | |
| 750 TU | Captured or Structural Silicone Glazed, Thermally Broken |
| 750 XT | Captured or Structural Silicone Glazed, Advanced Thermal |
| ProTek® YHC 300 Series (3" Sightline) | |
| 300 IG | Impact Resistant, Inside Glazed |
| 300 OG | Impact Resistant, Outside Glazed |
| 300 SSG | Impact Resistant, Field or Shop/Cassette |
| enerGfacade® YCW 750 Series (7-1/2" Depth) | |
| 750 XT/SSG | Outside Glazed, Advanced Thermal |
| 750 XT IG | Inside Glazed, Advanced Thermal |
| 750 XTP | Outside Glazed, Advanced Thermal with Polyamide Pressure Plates |

| System | Description |
|---|--|
| Window Wall | |
| YWE Series (4" & 6" Depths) | |
| 40 T | 4" Depth, Thermally Improved |
| 60 T | 6" Depth, Thermally Improved |
| YWW 45 Series (4-1/2" Depth) | |
| 45 FI | Center/Front Set, Thermally Broken |
| 45 T/TU | Inside/Outside Glazed, Thermally Broken |
| YWW Slab Edge Series (5" & 6" Depths) | |
| 50 T/TU | 5" Depth, Inside/Outside/Pre-Glazed, Thermally Broken |
| 60 T/TU | 6" Depth, Inside/Outside/Pre-Glazed, Thermally Broken |
| ProTek® YHW (6" Depth) | |
| 60 TU | 6" Depth, Impact Resistant, Inside/Pre-Glazed Thermally Broken |
| enerGfacade® YWW (6" Depth) | |
| 60 XT | 6" Depth, /Inside/Outside/Pre-Glazed, Advanced Thermal |
| Balcony Doors | |
| YSD Sliding Doors (6" & 7" Depths) | |
| 600 T | 6" Depth, Thermally Broken |
| 700 | 7" Depth, Heavy Duty |
| ProTek® YSD Sliding Doors (6" & 7" Depths) | |
| 600 TH | 6" Depth, Thermally Broken, Impact Resistant |
| 700 H | 7" Depth, Heavy Duty, Impact Resistant |

| System | Description |
|---|--|
| YTD Terrace Door (3-1/2" Depths) | |
| 350 T | 3-1/2" Depth, Thermally Broken |
| ProTek® YTD Terrace Door (3-1/2" Depths) | |
| 350 TH | 3-1/2" Depth, Thermally Broken, Impact Resistant |
| Windows | |
| YES/YOV Operable Vents | |
| SSG | Structural Silicone Glazed |
| SSG TU | Structural Silicone Glazed, Thermally Broken |
| SSG TUH | Structural Silicone Glazed, Thermally Broken, Impact Resistant |
| YOW 225 Series (2-1/4" Depth) | |
| T/TU | Insulating Glass, Thermally Broken |
| TUH | Insulating Glass, Thermally Broken, Impact Resistant |
| YOW 350 Series (3-1/2" Depth) | |
| T/TU | Insulating Glass, Thermally Broken |
| TUH | Insulating Glass, Thermally Broken, Impact Resistant |
| enerGfacade® YOW 350 (3-1/2" Depth) | |
| XT | Insulating Glass, Advanced Thermal |
| YVS/YSW Sliding Series (4" Depth) | |
| T/TU | Vertical/Horizontal Sliding, Thermally Broken |
| Sun Control | |
| ThermaShade® | Horizontal or Vertical Sunshades for Wall Systems |
| Luminance® | Interior Light Shelf for Wall Systems |

SERVICE

A modern multi-story building with a glass facade and balconies, illuminated at dusk. The building features a grid of large windows and several balconies with glass railings. Some interior lights are on, and the sky is a deep blue.

YWW 50 T
Window Wall



“ Because every project is unique,
YKK AP’s **experienced application
engineers** are available to **create
customized solutions** and **solve
unique design challenges.** ”

How can we help you today?

Verde Point - Arlington, VA

SERVICE & SUPPORT

Services to support you from sketch to completion...don't go at it alone.

As commercial façade design evolves to meet the ever-changing needs in code requirements, installation conditions and occupant preferences, YKK AP partners with customers and specifiers to help select or develop solutions that meet specific project needs and jobsite challenges. We understand industry trends and offer a number of services and resources for both architects and contractors to get your project on track.



Rapid Building Envelope Program

Select systems are available for expedited delivery to help meet deadlines.

Engineering Consultation

Assistance with building codes, system information, calculations, modifications and testing.

Continuing Education

Specifically designed code, fenestration and engineering courses that reward AIA CEU credit.

Project Support

Estimating, design and management for large scale projects.

Dedicated Freight Service

Shipping through YKK AP's network means predictable delivery schedules and reduced damage.

Field Technical Service

Phone and on-site consultation for product and installation challenges.

Thermal Modeling

Programs to predict heat transference and temperature control for your building.

BIM Models & CAD Drawings

Database of drawings and 3D models of our products for download to help with your project.



PERFORMANCE



YHS 50 TU
Storefront

“ YKK AP is the **first** commercial aluminum framing company in the façades industry to **voluntarily provide third party certified environmental product declarations** for all of our systems. ”

Always striving for the very best.

Benjamin Upper School - Palm Beach, FL

SPECIALTIES & SOLUTIONS



Specialty market performance deserves specialty market solutions.

Weather, labor and location...these factors have a strong influence on the type of façade performance you need to deliver your vision within code, budget and space limitations. We research performance trends, design challenges and regulations to design solutions for a variety of market needs and conditions.



ProTek® Systems

A comprehensive suite of products that improve safety and security from many hazards. These products are designed and fully tested to meet the hurricane impact requirements and blast standards.



enerGfacade® Systems

Provides both ecologically sustainable and economically sensible solutions for the entire building envelope. They offer superior insulation properties in a complete suite of thermally broken products created to suit your needs.



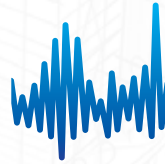
LEED/Sustainability

YKK AP professionals assist architects, developers, owners and builders in gaining LEED certification for their building designs. LEED is the nationally accepted benchmark for the design, construction, and operation of high performance green buildings.



Sun Control Solutions

Energy efficient solutions help manage solar heat gain and harvest natural daylight to meet sustainable design goals. They work in concert with the façade to improve occupant comfort by redirecting sunlight.



Acoustical Solutions

Acoustical Solutions help diminish the transfer of unwanted sound into living and working spaces. All YKK AP systems are tested for acoustic performance.



Specialty Windows

A diverse range of window products to complement fresh air, accessibility and any aesthetic requirements. This includes our zero sightline vents as well. Impact resistant and thermal models are also available.



Unitized Solutions

YKK AP offers a streamlined set of unitized and pre-glazed systems that can be shop assembled and glazed so individual panels or units can be installed in the field, saving time, money and space out at the job site.



Inside Glazing

We have solutions for inside glazing storefront, window wall and curtain wall systems. Exterior obstructions, narrow access and rising equipment costs can make installation from inside the building much more efficient.

WHY YKK AP AMERICA?



Local Care

Though YKK AP is a large company, we operate at a local level through our branch network in order to build long-term partnerships, experience local market trends and provide better service to our customers.



Form and Function

We don't design products, we design complete systems. YKK AP's façade systems are designed to fit together in a way that installs easily for the contractor, while embracing the architect's aesthetic vision.



Customer First

We take great pride in our customers. Fostering strong relationships is the core of our business. Our caring staff is always working hard to make everything from quoting to delivery as simple as possible.



Quality Manufacturing

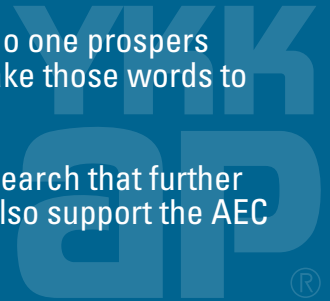
We are committed to developing great value and uncompromising quality. We keep every step in the production process under one roof, even producing our own extrusion dies, aluminum alloys and vinyl resins.



**We are more than just a good local company;
we're part of a global company that does good.**

When Tadao Yoshida founded YKK in Japan, he had this core philosophy in mind: “No one prospers without rendering benefit to others.” We call this the **CYCLE OF GOODNESS®** and take those words to heart in our business, our industry and our communities.

YKK AP supports the U.S. building industry and participates in organizations and research that further advance the use of fenestration systems and the facades industry as a whole. We also support the AEC community through education, industry events and community service.

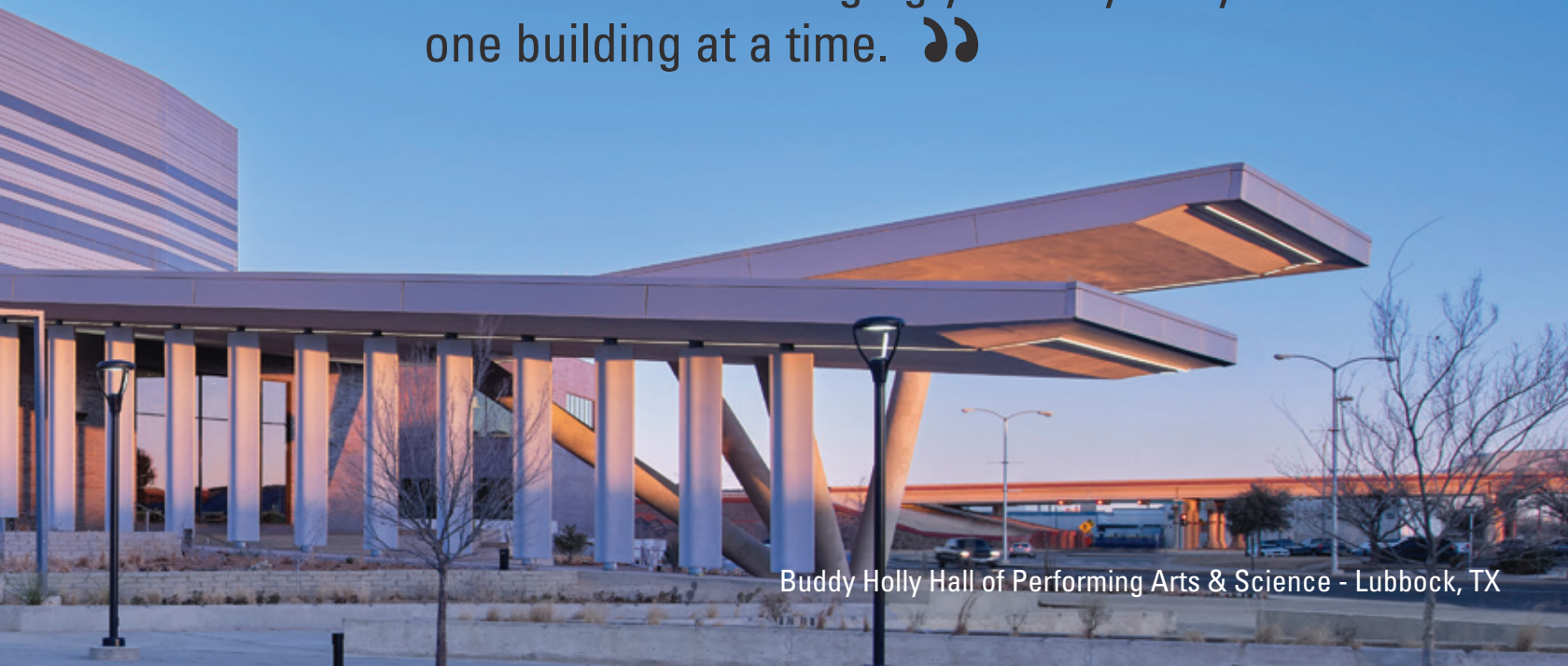


PROJECTS

YCW 750 SSG
Curtain Wall

LUBBOCK INDEPENDENT SCHOOL DISTRICT

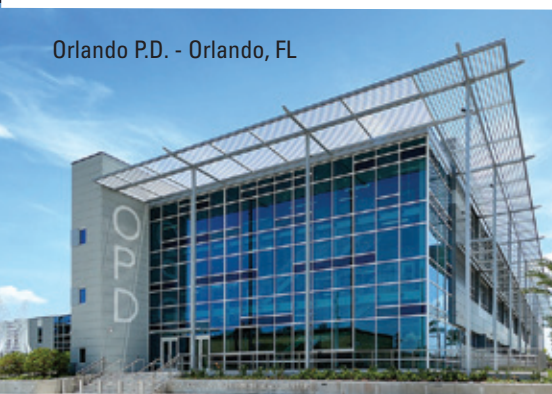
“ Our portfolio speaks for itself, leveraging our products to make unique designs come to life. We are changing your city’s skyline... one building at a time. ”



Buddy Holly Hall of Performing Arts & Science - Lubbock, TX



Tulane Commons - New Orleans, LA



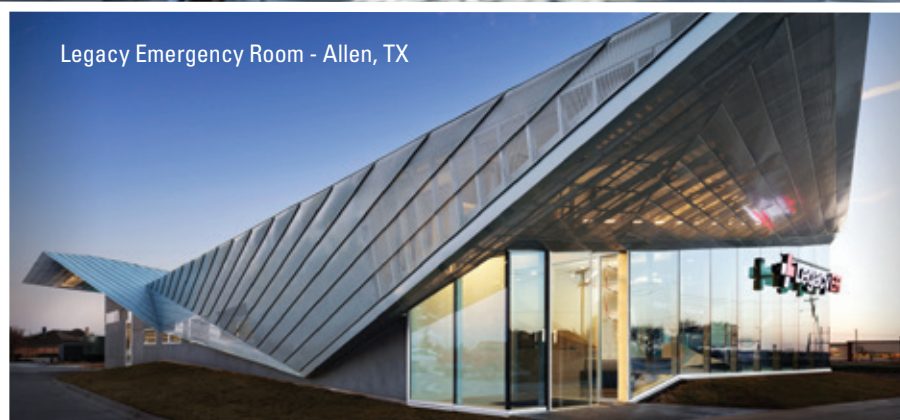
Orlando P.D. - Orlando, FL



Georgia State College of Law
Atlanta, GA



Boeing Hub - Charleston, SC



Legacy Emergency Room - Allen, TX

Sea Scout Base - Galveston, TX



Wanamaker Views - Philadelphia, PA



Bob Evans HQ - Albany, OH



Pennsylvania Convention Center
Philadelphia, PA



Abercorn Commons - Savannah, GA



Waterbury State Offices - Waterbury, VT



Wilson School "The Heights" - Arlington, VA



NKU Health Innovations Center - Highland Heights, KY

Cummins HQ - Columbus, IN



JW Marriott Hotel - Nashville, TN



The Aya - Washington D.C.



Oakmont Bakery - Oakmont, PA

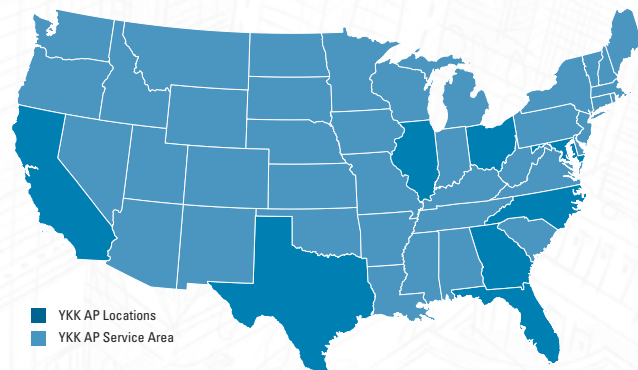


CONTACT US



A NATIONAL COMPANY with a LOCAL FOCUS.

www.ykkap.com



■ YKK AP Locations
■ YKK AP Service Area

Headquarters

Offices 101 Marietta St NW, Suite 2100, Atlanta, GA 30303

Tel: (678) 838-6000 **Fax:** (678) 838-6001

Sales & Manufacturing Centers

Cincinnati 8748 Jacquemin Dr, Suite 400, West Chester, OH 45069

Dallas 346 E. Belt Line Rd, Suite 600, Coppell, TX 75019

Los Angeles 10750 7th St, Suite 102, Rancho Cucamonga, CA 91730

Tel: (513) 942-7200 **Fax:** (513) 682-2123

Tel: (469) 528-6900 **Fax:** (469) 528-6907

Tel: (909) 219-6597 **Fax:** (909) 354-3170

cincinnati@ykkap.com

dallas@ykkap.com

la@ykkap.com

Branches

Atlanta 8140 Troon Cir, Suite 110, Austell, GA 30168

Baltimore 6670 Business Pkwy, Suite 104, Elkridge, MD 21075

Chicago 1000 Stevenson Ct, Suite 101, Roselle, IL 60172

Greensboro 4524 Green Point Dr, Suite 106, Greensboro, NC 27410

Houston 5300 Hollister Rd, Suite 320, Houston, TX 77040

Orlando 7608 Currency Dr, Orlando, FL 32809

Tel: (678) 945-6190 **Fax:** (678) 945-6328

Tel: (410) 796-1001 **Fax:** (410) 796-2031

Tel: (630) 582-9602 **Fax:** (866) 955-2441

Tel: (336) 665-1963 **Fax:** (336) 665-1965

Tel: (713) 329-9551 **Fax:** (713) 939-0811

Tel: (407) 856-0660 **Fax:** (407) 856-0090

atlanta@ykkap.com

baltimore@ykkap.com

chicago@ykkap.com

greensboro@ykkap.com

houston@ykkap.com

orlando@ykkap.com



©2025 YKK AP America Inc.
16-7003-09