



www.ykkap.com



1701 Rhode Island Avenue - Washington D.C.

YCW 750 SSG

Field/Stick Built

2 and 4-Sided Structural Silicone Glazed Curtain Wall System

The popular YCW 750 family of products has been expanded to include 4-side structural silicone glazing. This stick built system setup is designed for glazing in the field for easy installation. A variety of mullion depths are available as options to meet different performance requirements. 1" & 1/4" glazing (with adaptor) is available for 2-sided while 1" glazing for 4-sided as a system standard.*

*Other custom glazing/framing solutions may be available. Designs must be reviewed by YKK AP engineering for size and weight based on the project.

- 4-Sided captured (YCW 750 OG/IG) integration options with SSG
- Accommodates splayed wall designs
- 90° inside and outside corners
- Sealant is used by default and 3M® VHB® Structural Glazing Tape is an alternative

3M and VHB is a registered trademark of 3M CORPORATION

Configuration:

Glazing	Glass Setting	Installation
SSG	Front Set	Shear Block

Thermal Values:

U-Factor:	Values as low as 0.30*
CRF:	Minimum 74 frame and 68 glass

*Based on AAMA 507. Lower values may be achieved through further simulation.

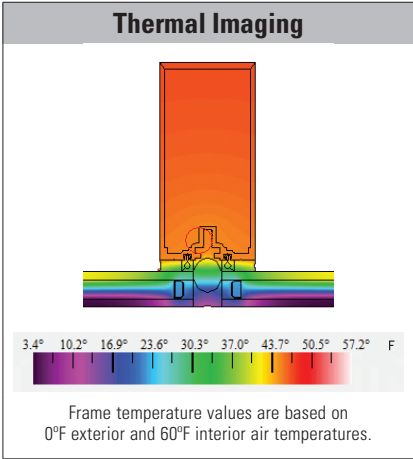


YCW 750 SSG FIELD SPECS			
Base Depth	7-1/2"		
Sightline	2-1/2"		
Config	Structural Silicone Glazed / Front Set		
Tested Glass	1" IGU with Low-E (C.O.G. U-Factor: 0.29)		
Test	Results		Standards
Air Infiltration	0.06 CFM/FT ² (1.10 m ³ /h·m ²) @ 6.24 PSF (299 Pa)		ASTM E 283
Water Infiltration	(2-Sided) Static: 20 PSF (958 Pa) Dynamic: 20 PSF (958 Pa)	(4-Sided) Static: 20 PSF (958 Pa) Dynamic: 20 PSF (958 Pa)	ASTM E 331 AAMA 501
Acoustical (1" IGU)	(4-Sided) Std STC: 33 Std OITC: 27 (2-Sided) Lam STC: 35 Lam OITC: 29 (4-Sided) Lam STC: 36 Lam OITC: 31		ASTM E 90 ASTM E 1425

Thermal Performance								
Mullion Depth	U-Factor - BTU/hr·ft ² ·°F						CRF	
2-Sided Field	0.40	0.39	0.37	0.35	0.34	0.32	74	68
4-Sided Field	0.38	0.37	0.35	0.33	0.31	0.30	76	69
Center of Glass	0.30	0.28	0.26	0.24	0.22	0.20	Frame	Glass
AAMA 507							AAMA 1503	

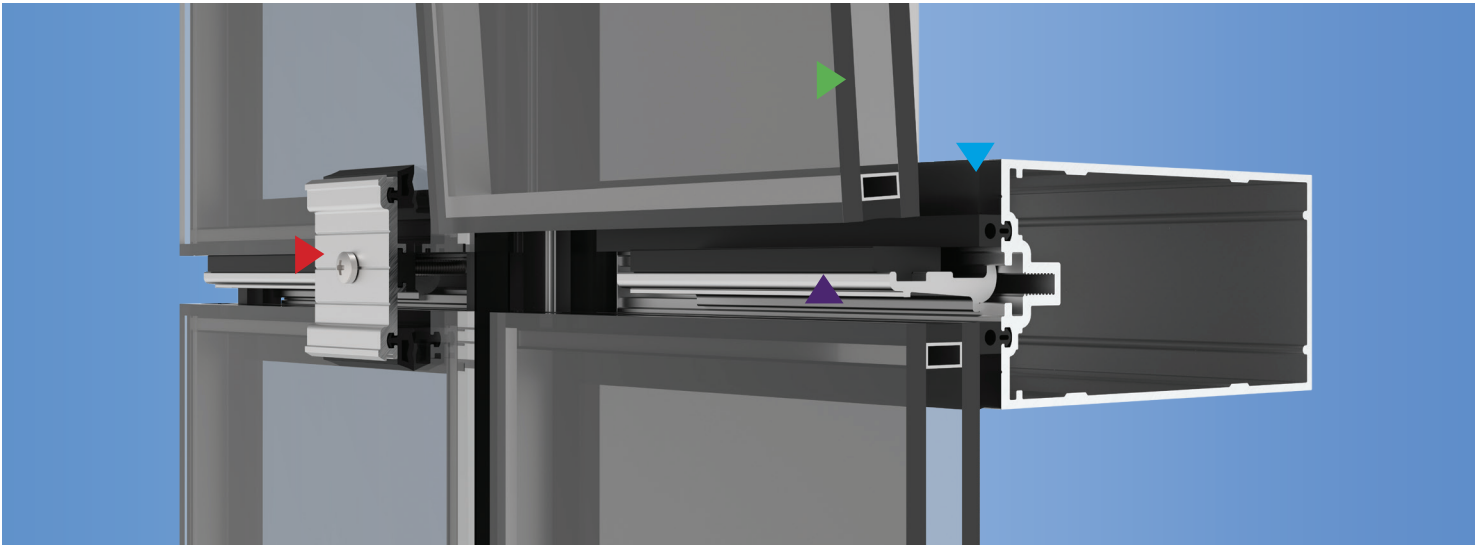
Finish Options	
Type	Standard
Factory Anodized (2-Sided only)	AAMA 612
Organic Paints	AAMA 2604 AAMA 2605

Mullion Depth Options	
2-Sided 1/4" Glass	2-Sided 1" Glass
5-1/4" and 6-3/4"	6" and 7-1/2"
4-Sided 1" Glass	
5-1/16", 6-9/16", 8-1/16" and 9-9/16"	



A Closer Look at the Field/Stick Build

For the Field Glazed option, the glazing is set right against the horizontal mullion using silicone and secured by temporary glass retainers before the final sealing. This differs from the Shop Glazed option, which glass panels are pre-glazed inside cassette frames and then inserted into the integral on the horizontal mullion, while being secured with permanent toggles.



- FIELD GLAZED

1" glazing panel that attaches to the silicone on mullions

SETTING BLOCK/CHAIN

Designed to integrate in mullion cavity and hold glass weight
- TEMPORARY GLASS RETAINER

For securing panels in place until the exterior silicone is applied

SILICONE/GASKET SEAL

Applied to the mullions before the glass unit is set in place



www.ykkap.com



Buddy Holly Performing Arts Center - Lubbock, TX

YCW 750 SSG

Shop/Cassette

2 and 4-Sided Structural Silicone Glazed Curtain Wall System

The popular YCW 750 family of products has been expanded to include 4-side structural silicone cassette glazing. This stick built system is designed for glazing in a climate controlled environment for increased quality assurance of critical seals. Shop glazed cassettes interlock with integral toggle adapters on horizontals to create full width engagement top and bottom.

- 4-Sided SSG shop/cassette glazing
- 4-Sided field/captured (YCW 750 OG/IG) integration options
- Accomodates splayed wall designs
- Dual finish capability for different exterior and interior colors
- Sealant is used by default and 3M® VHB® Structural Glazing Tape is an alternative

3M and VHB is a registered trademark of 3M CORPORATION

Configuration:

Glazing	Glass Setting	Installation
SSG	Front Set	Shear Block

Thermal Values:

U-Factor:	Values as low as 0.28*
CRF:	Minimum 74 frame and 65 glass

*Based on AAMA 507. Lower values may be achieved through further simulation.

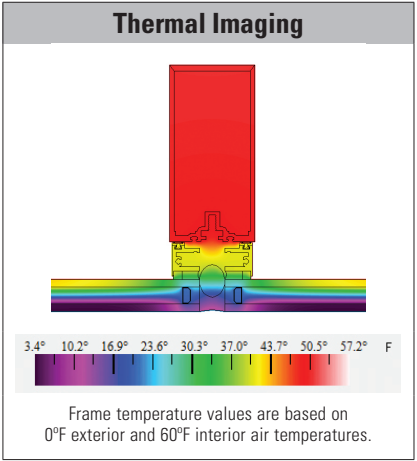


YCW 750 SSG SHOP SPECS		
Base Depth	7-1/2"	
Sightline	2-1/2"	
Config	Structural Silicone Glazed / Front Set	
Tested Glass	1" IGU with Low-E (C.O.G. U-Factor: 0.29)	
Test	Results	Standards
Air Infiltration	0.06 CFM/FT ² (1.10 m ³ /h·m ²) @ 6.24 PSF (299 Pa)	ASTM E 283
Water Infiltration	<div> <div>(2-Sided) Static: 20 PSF (957 Pa) Dynamic: 20 PSF (957 Pa)</div> <div>(4-Sided) Static: 15 PSF (718 Pa) Dynamic: 15 PSF (718 Pa)</div> </div>	ASTM E 331 AAMA 501
Acoustical (1" IGU)	<div>Standard STC: 33 Standard OITC: 26</div> <div>Laminated STC: 37 Laminated OITC: 31</div>	ASTM E 90 ASTM E 1425

Thermal Performance								
Mullion Depth	U-Factor - BTU/hr·ft ² ·°F						CRF	
2-Sided Shop	0.40	0.39	0.37	0.35	0.34	0.32	74	68
4-Sided Shop	0.37	0.35	0.33	0.32	0.30	0.28	80	65
Center of Glass	0.30	0.28	0.26	0.24	0.22	0.20	Frame	Glass
AAMA 507							AAMA 1503	

Finish Options	
Type	Standard
Factory Anodized (2-Sided only)	AAMA 612
Organic Paints	AAMA 2604 AAMA 2605

Mullion Depth Options	
2-Sided 1/4" Glass	2-Sided 1" Glass
5-1/4" and 6-3/4"	6" and 7-1/2"
4-Sided 1" Glass	
5-7/8", 7-3/8", 8-7/8" and 10-3/8"	

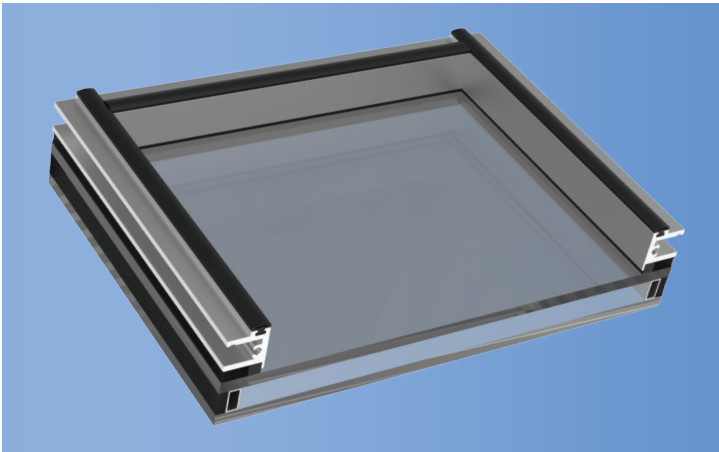


Brief Cassette/Shop Rundown

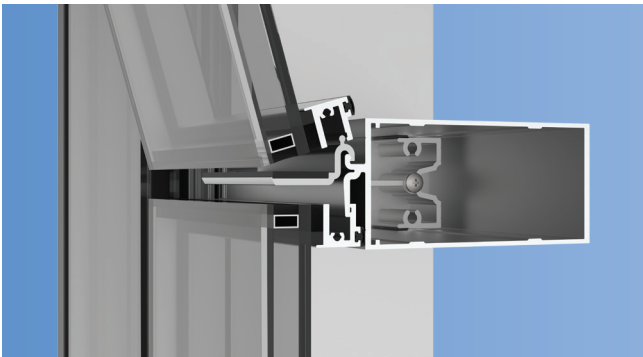
(2-sided toggle shown, 4-sided toggle is similar)



The curtain wall framing around the units is pre-installed on the job site prior to the units being sent to the site.



Glass units are silicone glazed to an aluminum carrier frame or cassette, in a clean, temperature controlled shop environment to cure properly.



The panel cassette adaptor on the glass units interlock with the integral adaptor on the horizontal mullions.



Rotating toggle locks are inserted on the vertical mullions to complete the unit installation. Silicone can now be applied.

Additional information including CAD details, CSI specs, test reports and installation instructions are found on the Product Guide by clicking this link or visiting www.ykkap.com/commercial/productguide