

YES SSG TUH Vent

Thermally Broken and Impact Resistant Operable Window

ProTek



YKK AP Hurricane & Blast Solutions

Seamless Wall System Integration

Whether your goal is to maintain the architectural integrity of a historic building or to take advantage of the value derived from façade construction, impact resistant zero-sightline operable vents are the ideal solution for your project's ventilation needs.

The YES SSG TUH Vent is available in sizes up to 36" x 60" (or 60" x 36"). This thermally broken, impact resistant vent is compatible with the YHS 50 Storefronts, YHW 60 TU Window Wall and the YHC 300 Curtain Walls.

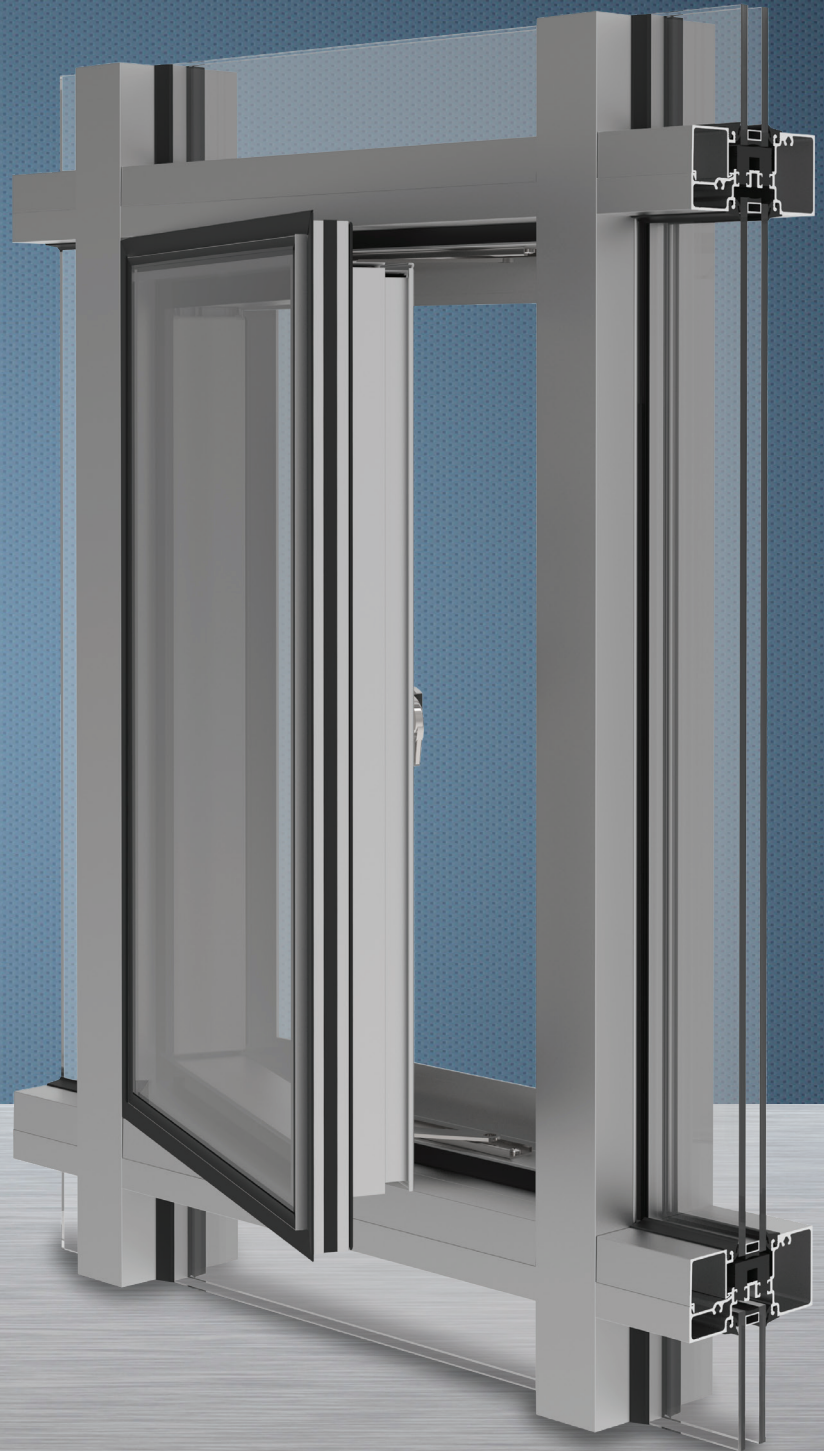
Product Options & Features

- **Flexible Design** - Blend seamlessly with the surrounding framing system to become virtually invisible when viewed from a distance. Insulating Glass units can be ordered with internal muntins.
- **Florida Product Approval – HVHZ**
 - ◆ Operable ± 65 PSF with White Bronze Cam Locks, ± 80 PSF with Multi-Point Locks (VMPL)
 - ◆ Small Missile .060 PVB / Large Missile .090 PVB
- Corrosive resistant accessories ensure a long operational life span
- **Outstanding Thermal Performance:** Meets the 2015 International Energy Conservation Code (IECC) through Zone 6 utilizing standard 1" Low E insulating glass. ($U = 0.29$ cog)



YKK
ap®

Quality
inspires®



YES SSG TUH Vent

SYSTEM SPECIFICATIONS

System Sightline	Base Depth	Glazing & Config	Glass	Air Infiltration	Water Infiltration	Thermal Performance	Acoustical Performance
0"	3-1/2"	Insulating & Casement Out, Project Out or Fixed	1-1/16" Lam IGU with Low-E (C.O.G U-factor: 0.29)	0.10 CFM/FT ² (16.5 m ³ /h·m ²)	Static: 15 PSF (718 Pa)	U-factor: 0.41 BTU/HR·FT ² ·°F* CRF: Minimum of 69 on frame**	Lam STC: 35 Lam OITC: 28
Testing Standards				TAS 202 & ASTM E 283	ASTM E 331 & AAMA 501	* NFRC 102 & ** AAMA 1503	ASTM E 90 & 1332
Florida Product Approval				Large and Small Missile, WZ3 and HVHZ, ASTM E 1886/1996, TAS 201 and 203			
Available Finishes				Factory Anodized (AAMA 612) and Organic Paints (AAMA 2604 & AAMA 2605)			

THERMAL IMAGING

Frame temperature comparison values based on 0° exterior and 69.8° interior air temperatures.

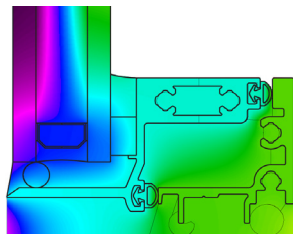
VENT HARDWARE



Vent Multi Point Lock (VMPL) Handles

Satin Nickel, Satin Chrome, White and Black Powder Coated

14.9°

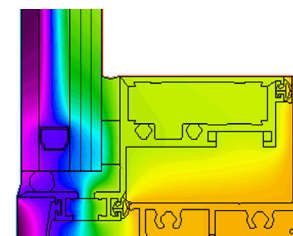


Non-Thermal
SSG Vent

39.8°

Non-thermal YES SSG Vent

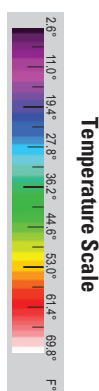
13.4°



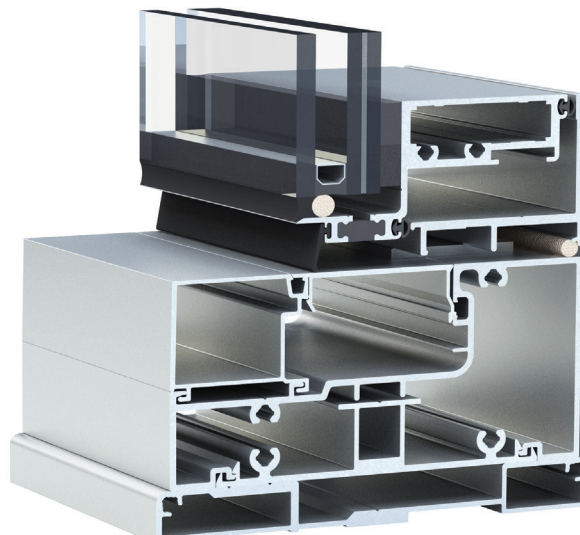
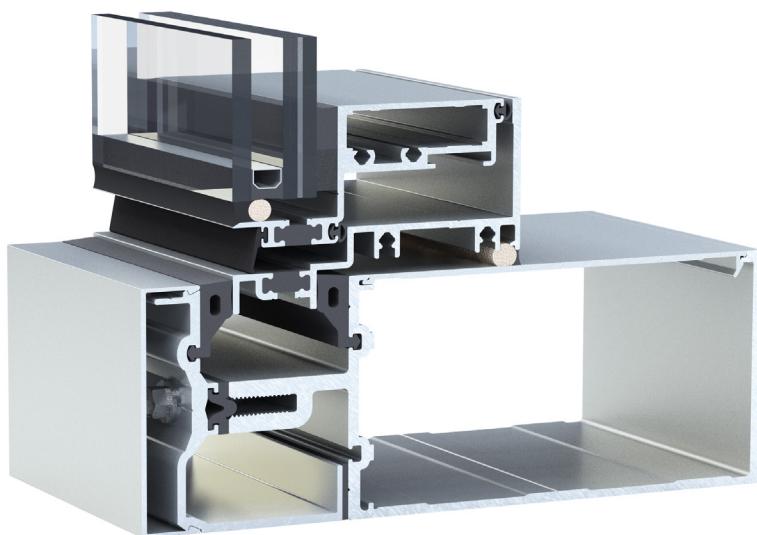
YES SSG
TUH Vent

53.2°

Thermal YES SSG TUH Vent



Pocket Frame with
YHC 300 OG Curtain Wall



Additional information including CAD details, CSI specifications, Test Reports and Installation instructions are available online at:
www.ykkap.com/commercial/product/architectural-windows/yes-ssg-tuh-vent/