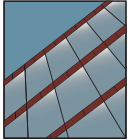


# YWW 50 T

Thermally Broken Window Wall System with Optional Slab Edge Cover



## WINDOW WALL SYSTEM

### Product Description

The YWW 50 T is a window wall glazing system designed for use in multi-story applications. It includes an innovative slab edge cover that yields the beauty and appearance of a curtain wall application. The glass plane is set to the front to maximize thermal performance. The system has mullion options that allow glazing from the interior or the exterior. Structural Silicone Glazing is also an option. Thermal performance is enhanced by YKK AP's patented MegaTherm® thermal break technology that also provides the system with dual finish capability. The screw spline assembly makes fabrication and installation more efficient.

### Product Options & Features

- Slab Edge Cover Option
- MegaTherm® Thermal Barrier
- Inside, Outside and SSG Glazing Options
- 1" Infill with 1/4" Infill Adapter Options
- Compatible with Entrance Systems
- Screw Spline Fabrication and Assembly

**U-Factor** Values as low as 0.34\*

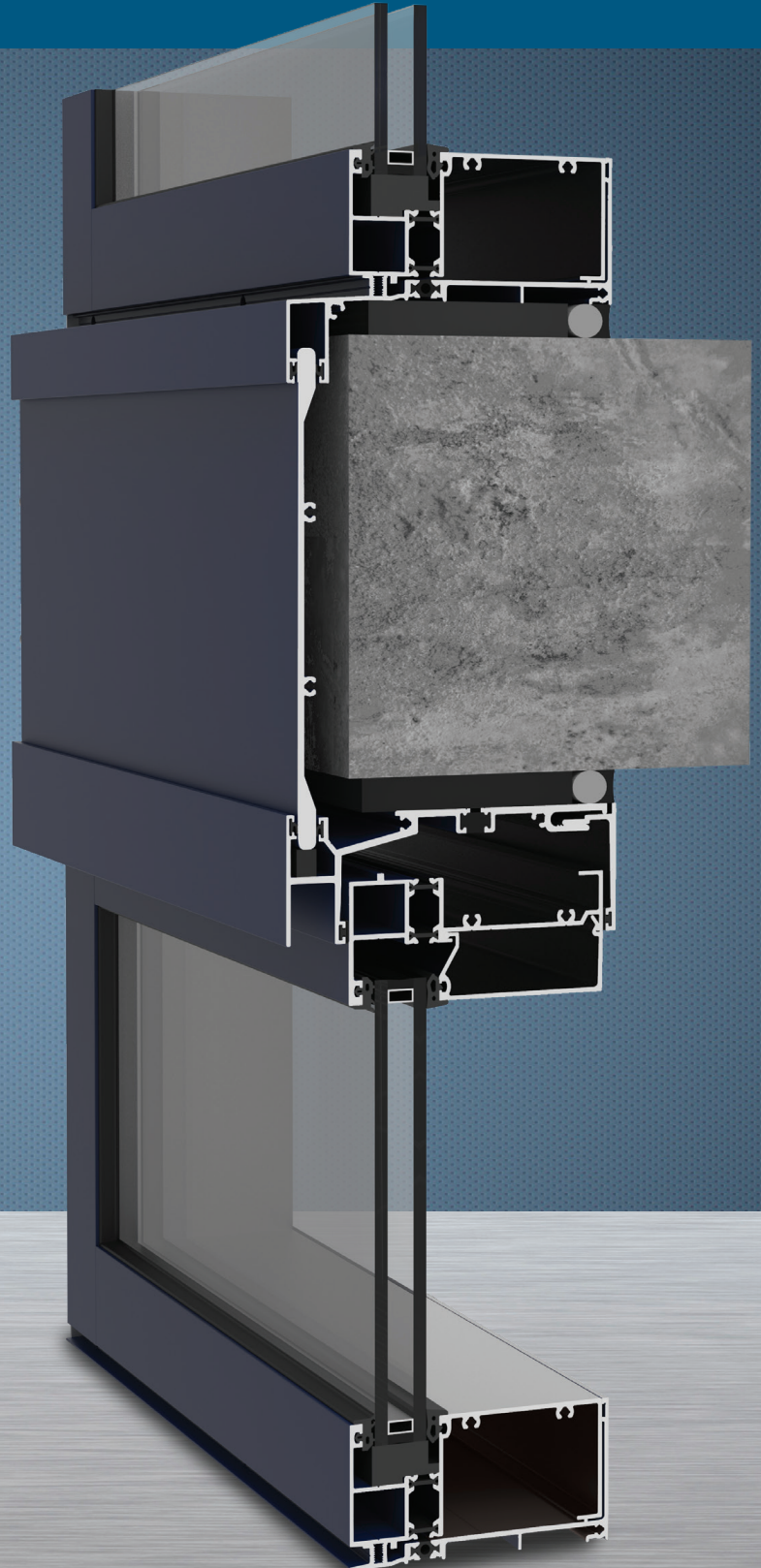
**CRF** Minimum 70<sub>frame</sub> & 63<sub>glass</sub>

\*Based on AAMA 507. Lower values may be achieved through further simulation.



**YKK  
ap**®

Quality  
inspires®



# YWW 50 T

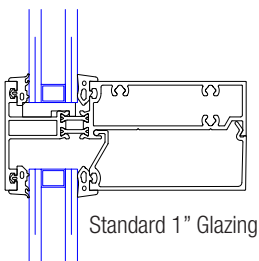
## SYSTEM SPECIFICATIONS

System Sightline	Base Depth	Glazing & Config	Glass	Air Infiltration	Water Infiltration	Acoustical Performance
2-1/4"	5" (Without Slab Edge Cover)	Outside, Inside or SSG & Front Set	1" IGU with Low-E (C.O.G. U-factor: 0.29)	0.06 CFM/FT <sup>2</sup> (1.10 m <sup>3</sup> /h-m <sup>2</sup> ) @ 6.24 PSF (299 Pa)	<b>Static:</b> 12 PSF (575 Pa)	Std STC: 33 Std OITC: 27
<b>Testing Standards</b>				ASTM E 283	ASTM E 331 & AAMA 501	ASTM E 90 & 1425
<b>Installation Options</b>				Slab Edge, Continuous or Screw Spline with Monolithic or Insulating Glass		
<b>Available Finishes</b>				Factory Anodized (AAMA 612) and Organic Paints (AAMA 2604 & AAMA 2605)		

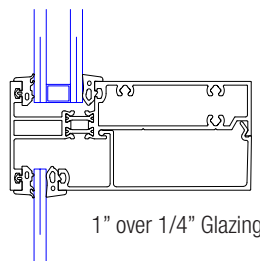
Thermal Performance						
1" IGU	BTU/hr-ft <sup>2</sup> ·°F					
C.O.G U-Factor	0.30	0.28	0.26	0.24	0.22	0.20
2-1/4" x 5"	0.42	0.41	0.39	0.38	0.36	0.34
Testing Standards	AAMA 507 & NFRC 100					

CRF	
Frame	Glass
70	63
AAMA 1503	

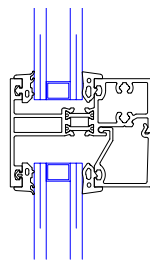
## GLAZING OPTIONS



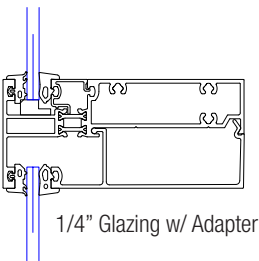
Standard 1" Glazing



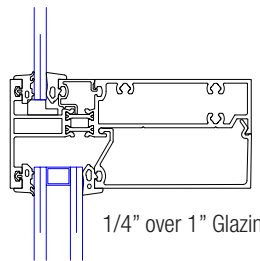
1" over 1/4" Glazing



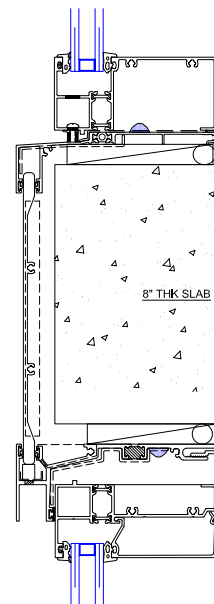
1" Glazing Short Depth



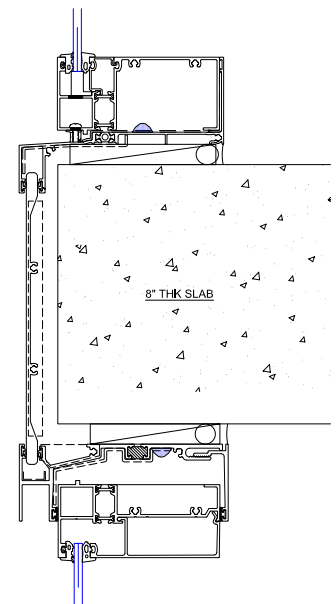
1/4" Glazing w/ Adapter



1/4" over 1" Glazing



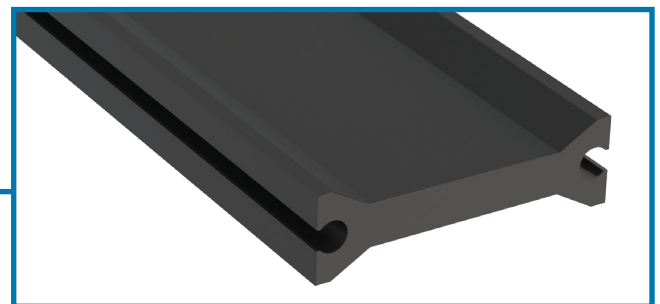
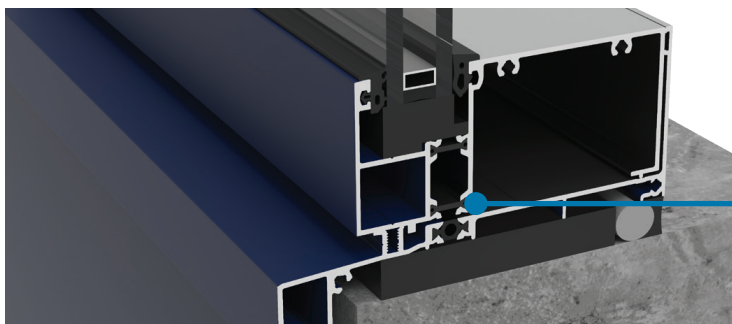
1" Glazing Slab Edge



1/4" Glazing Slab Edge

## MEGATHERM® FRAMING

This system utilizes a dual barrier 6/6 polyamide iso strut set that secures the inner and outer mullion pieces together. This strut provides a thermal barrier that conserves energy and limits heat transference. It will not degrade, crack or break due to the glass-fiber reinforcement.



Additional information including CAD details, CSI specifications, Test Reports and Installation instructions are available online at:

[www.ykkap.com/commercial/product/window-walls/yww-50-t/](http://www.ykkap.com/commercial/product/window-walls/yww-50-t/)