

# YOV SSG

Zero Sightline, Operable Vent for Structural Silicone Glazed Curtain Wall



## OPERABLE WINDOWS

### Bringing the Outside In

The YOVS SSG Vent enables designers to provide ventilation to architectural aluminum wall systems without adding the large sight line of traditional windows, as it seamlessly blends with the surrounding framing system to become virtually invisible when viewed from the exterior. This product is an excellent choice for schools, offices and other commercial structures requiring ventilation. The YOVS SSG provides excellent ventilation that meets the 2012 International Energy Conservation Code (IECC) through Zone 6 with standard Low E (U = 0.39 COG).

### Product Options & Features

- Glazes into 4-sided Curtain Wall (Field or Shop) or any 2-sided vertical combo of SSG/Captured
- Configurations: Casement Out & Project Out
- Glass is bonded to vent's frame without need for additional retainers, providing a clean look
- Tinted glass option for more aesthetic look
- Vent and Frame Multi-Point Locks available
- Factory glazing and screens available
- YKK AP Heavy Duty, Stainless Steel hinges and Standard White Bronze cast locking hardware

#### U-Factor

Values as low as 0.31\*

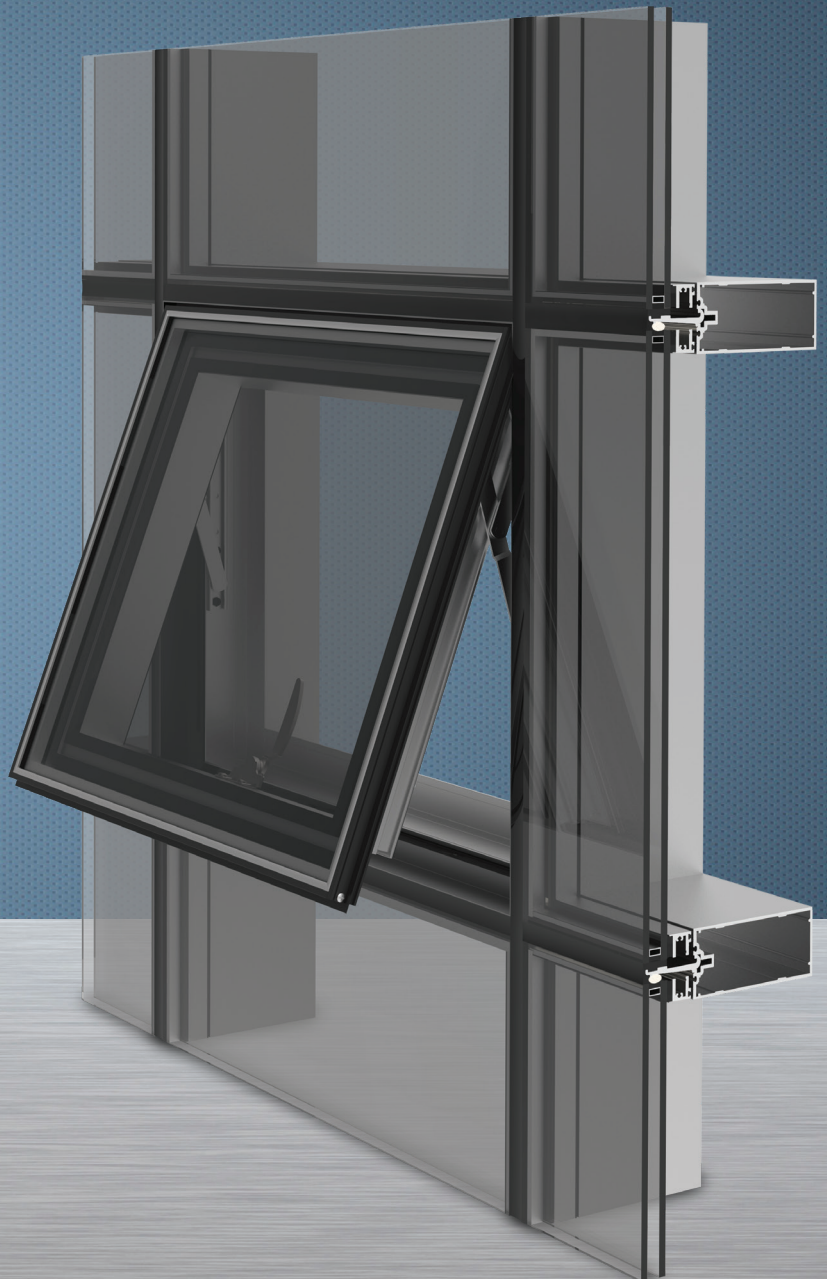
#### CRF

Minimum 73<sub>frame</sub> & 72<sub>glass</sub>

\*Based on AAMA 507. Lower values may be achieved through further simulation.



Quality  
inspires®

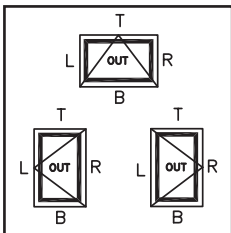


## SYSTEM SPECIFICATIONS

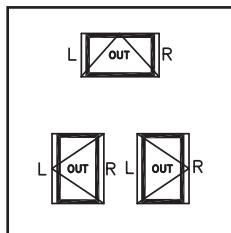
System Sightline	Base Depth	Glazing	Air Infiltration	Water Infiltration	Acoustical Performance
0"	2-3/4"	1" IGU with Low-E (C.O.G. U-factor: 0.29)	0.10 CFM/FT² (1.85 m³/h·m²) @ 6.24 PSF (299 Pa)	Static: 15 PSF (720 Pa) Dynamic: 15 PSF (720 Pa)	Std STC: 35 Std OITC: 28
					Lam STC: 36 Lam OITC: 28
Testing Standards			ASTM E 283	ASTM E 331 & AAMA 501	ASTM E 90 & ASTM E 1425
Oversized Vent Option			Up to 58 x 93 with AW Performance Grade 55		
Structural Performance			AW Performance Grade 70	AW Performance Grade 100 with Project Out and VMPL Hardware	
Available Finishes			Factory Anodized (AAMA 612) and Organic Paints (AAMA 2604 & AAMA 2605)		

Thermal Performance							CRF	
1" IGU	BTU/hr·ft <sup>2</sup> ·°F						Frame	Glass
<b>C.O.G U-Factor</b>	0.30	0.28	0.26	0.24	0.22	0.20	73	73
<b>Awning (Outswing)</b>	0.42	0.40	0.38	0.37	0.35	0.33	73	72
<b>Casement (Outswing)</b>	0.39	0.38	0.36	0.34	0.33	0.31	AAMA 1503	
<b>Testing Standards</b>	AAMA 507						AAMA 1503	

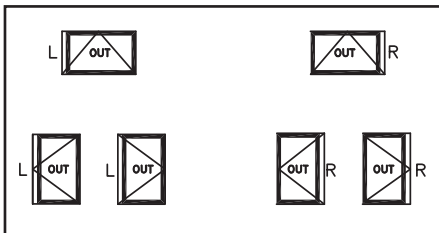
### 4-sided SSG



### 2-sided SSG Vertical



### 1-sided SSG Vertical



## HARDWARE

Cam Handle  
Lock System  
(STANDARD)



Roto Handle  
for Project-Out  
(OPTIONAL)

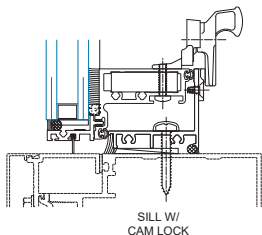


Frame Multi-Point  
Locking System  
(OPTIONAL)

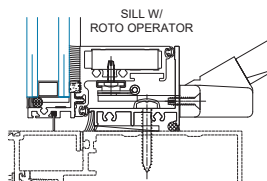


Vent Multi-Point  
Locking System  
(OPTIONAL)\*

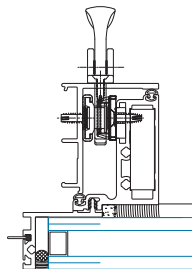
\*STANDARD for AW 100



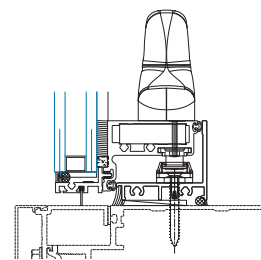
SILL W/  
CAM LOCK



SILL W/  
ROTO OPERATOR



JAMB W/ FRAME  
MULTI-POINT LOCK



SILL W/ VENT  
MULTIPOINT LOCK

**Also Available:** Wicket Screens (10" Door or Full) and a Limit Device (Approved for NYC)

Additional information including CAD details, CSI specifications, Test Reports and Installation instructions are available online at:

[www.ykkap.com/commercial/product/architectural-windows/yov-ssg/](http://www.ykkap.com/commercial/product/architectural-windows/yov-ssg/)