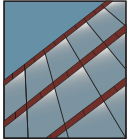


# YWE 40 T

Thermally Improved, Front Loading Window Wall System



## WINDOW WALL SYSTEM

### Product Description

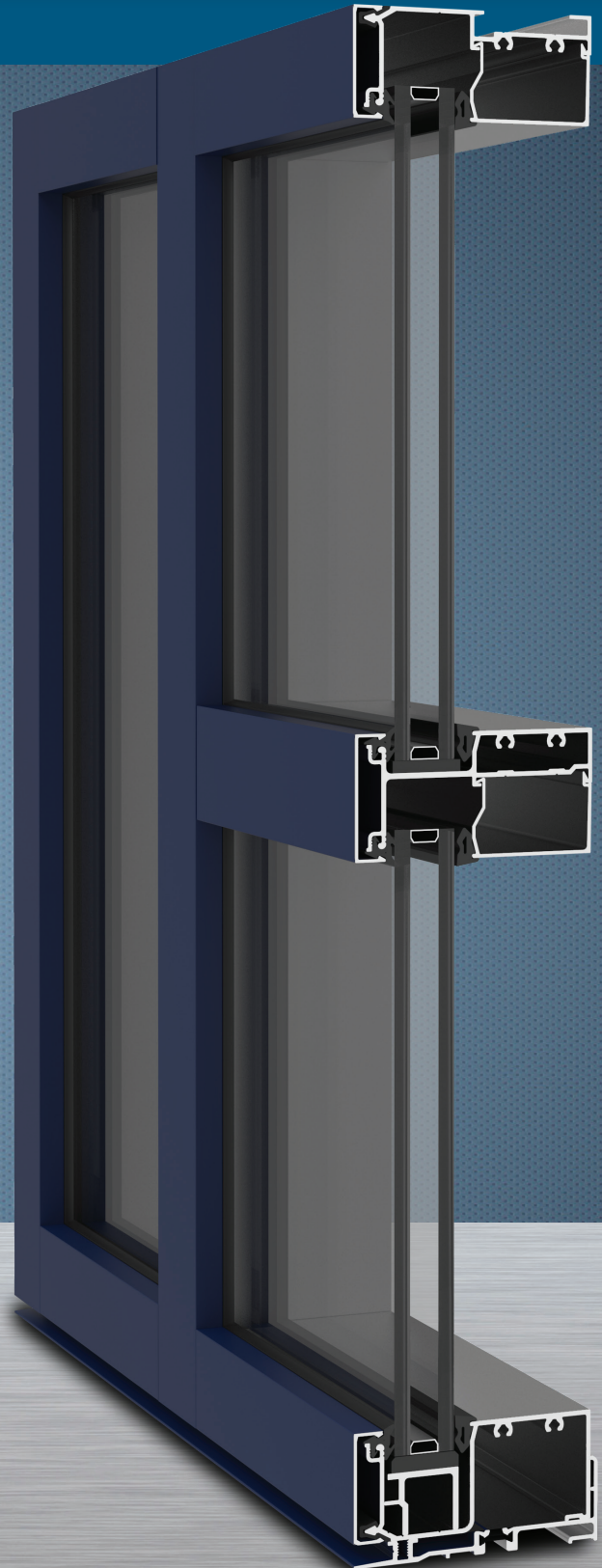
The YWE 40 T is a thermally improved, front loaded window wall system designed to meet the design challenges of today's buildings. The system is glazed from the interior of the building to reduce labor costs. Our snap-on face covers enable separate interior and exterior finishes for aesthetic and/or economic reasons. Optional head and sill anchors help installations in punched openings. Two sided structural silicone glazing at vertical mullions is also available as an option.

### Product Options & Features

- 2" Face by 4" Overall Depth (1-3/4" Face Members)
- Inside Glazed to Reduce Field Labor
- Screw Spline or Shear Clip Construction
- Optional Structural Silicone Glazed Intermediate Verticals
- Separate Interior/Exterior Finish Options
- Thermal Clips help reduce heat transfer



Quality  
inspires®

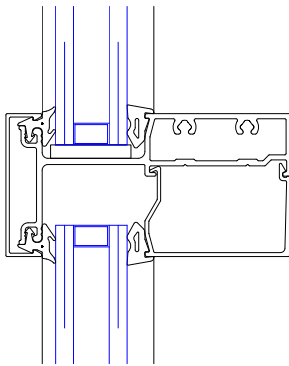


# YWE 40 T

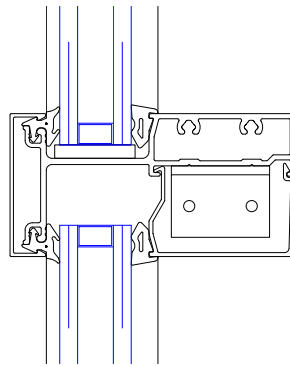
## SYSTEM SPECIFICATIONS

System Sightline	Base Depth	Glazing & Config	Glass	Air Infiltration	Water Infiltration	Thermal Performance
2"	4"	Inside & Front Set	1" IGU with Low-E (C.O.G. U-factor: 0.29)	0.06 CFM/FT <sup>2</sup> (1.10 m <sup>3</sup> /h·m <sup>2</sup> ) @ 6.24 PSF (299 Pa)	<b>Static:</b> 10 PSF (479 Pa) <b>Dynamic:</b> 10 PSF (479 Pa)	<b>U-factor:</b> 0.45 BTU/HR·FT <sup>2</sup> ·°F* <b>CRF:</b> Minimum of 57 on frame**
Testing Standards				ASTM E 283	ASTM E 331 & AAMA 501	* NFRC 102 & ** AAMA 1503
Installation Options				Continuous Head and Sill, Vertical Through or Screw Spline with Monolithic or Insulating Glass		
Available Finishes				Factory Anodized (AAMA 612) and Organic Paints (AAMA 2604 & AAMA 2605)		

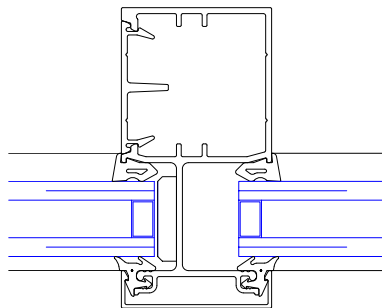
## VERTICAL/HORIZONTAL DETAILS



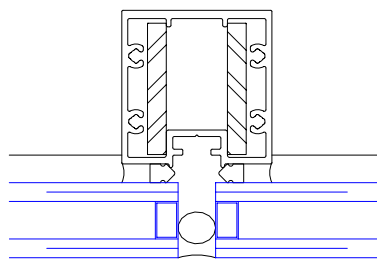
Horizontal Detail



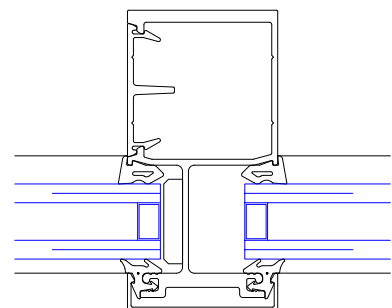
Horizontal Detail for Continuous Head & Sill



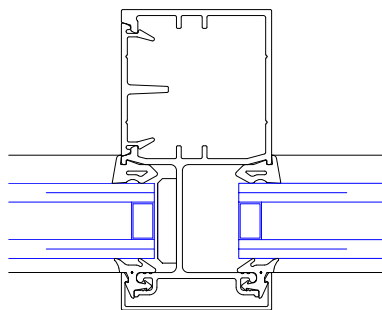
Vertical Detail



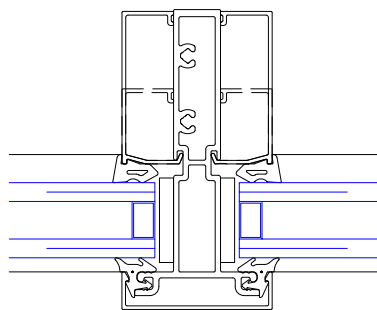
SSG Vertical Detail



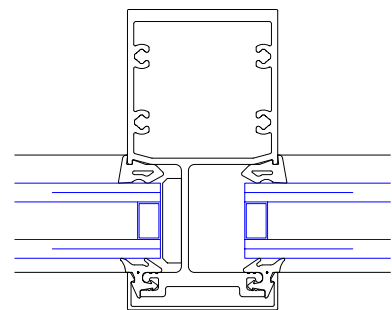
Heavy Duty Vertical Detail



Vertical Detail for Continuous Head & Sill



Optional Vertical Detail for Continuous Head & Sill



Heavy Duty Vertical Detail for Continuous Head & Sill

Additional information including CAD details, CSI specifications, Test Reports and Installation instructions are available online at:

[www.ykkap.com/commercial/product/window-walls/ywe-40-t/](http://www.ykkap.com/commercial/product/window-walls/ywe-40-t/)