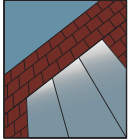


YES 60 FI

Offset Storefront System for Maximum Structural Strength



STOREFRONT SYSTEM

Product Description

This 6" offset storefront system can deliver the performance necessary for climate zones 1 and 2 with a 1" low E IGU. The YES 60 FI is 10% stronger structurally than the TU and XT systems allowing for greater spans both vertically and horizontally. Our FI can even glaze a 1/4" monolithic glass with a pocket reducer. This system is truly one of the most flexible storefront design choices on the market today.

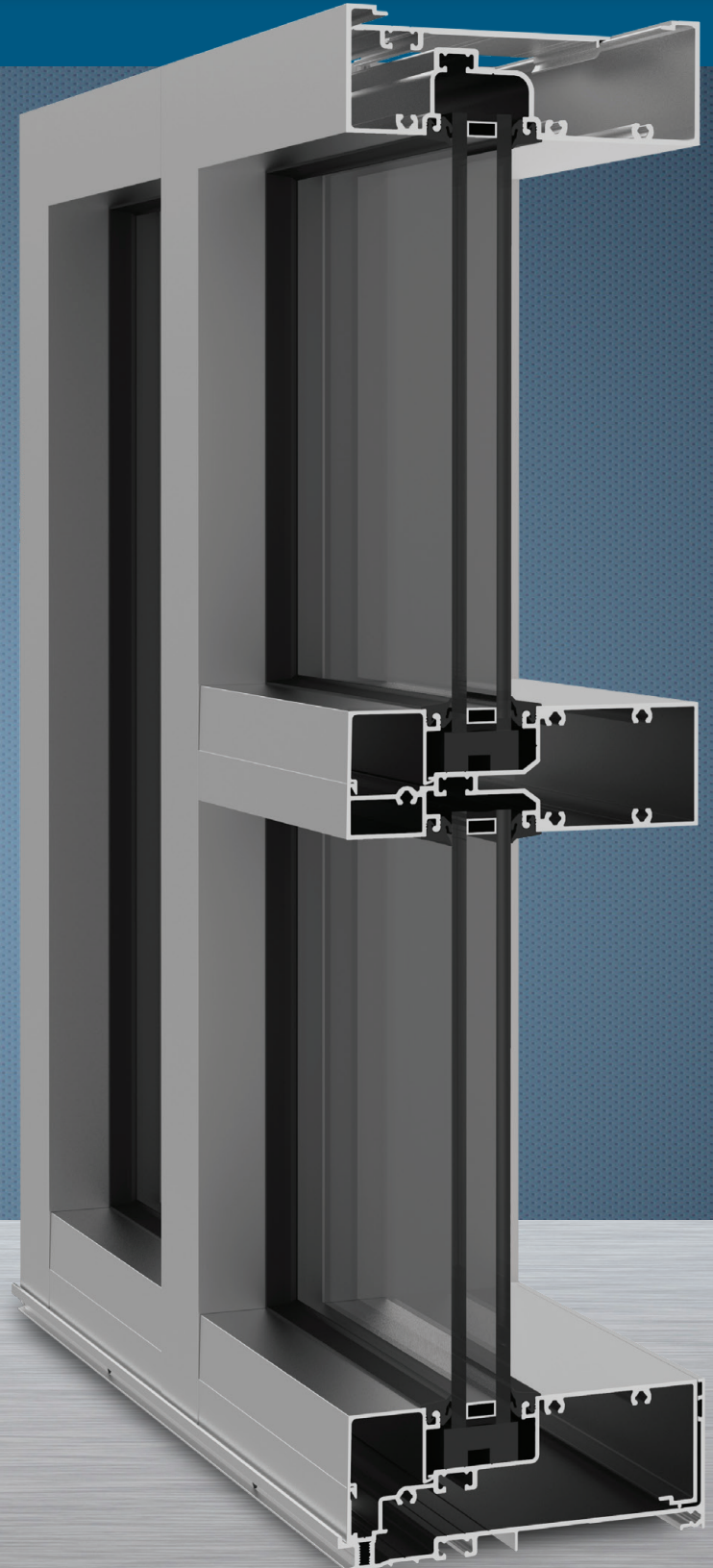
Product Options & Features

- 2" sightline x 6" depth
- Outside glazed
- Screw spline assembly
- Integrates with Model 20D/35D/50D
Single and Paired Doors
- High performance sill flashing
- Integrates with YES 45 Series storefronts
- Compatible with ThermaShade® and Luminance® Sun Control systems
- Accepts 1/4" up to 1" Insulating Glass



YKK
ap®

Quality
inspires®



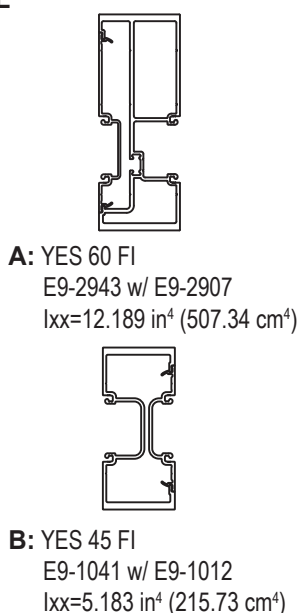
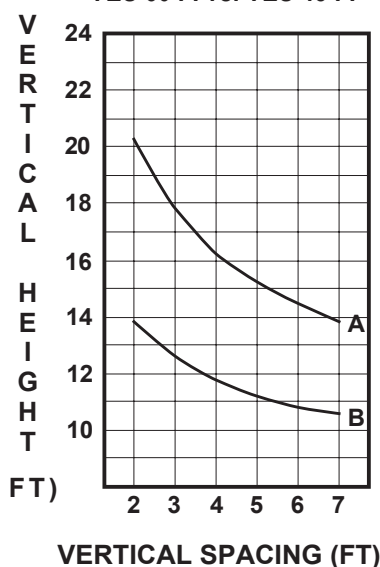
SYSTEM SPECIFICATIONS

System Sightline	Base Depth	Glazing & Config	Glass	Air Infiltration	Water Infiltration	Thermal Performance	Acoustical Performance
2"	6"	Outside & Offset	1" IGU with Low-E (C.O.G. U-factor: 0.29)	0.06 CFM/FT ² (1.10 m ³ /h·m ²) @ 6.24 PSF (299 Pa)	Static: 12 PSF (574 Pa) Dynamic: 12 PSF (574 Pa)	U-factor: 0.54 BTU/HR·FT ² ·°F* CRF: Minimum of 42 on frame**	Std STC: 31 Std OITC: 25 Lam STC: 34 Lam OITC: 29
Testing Standards				ASTM E 283	ASTM E 331 & AAMA 501	* NFRC 100 & ** AAMA 1503	ASTM E 90 & 1425
Installation Options				Screw Spline with Insulating Glass			
Available Finishes				Factory Anodized (AAMA 612) and Organic Paints (AAMA 2604 & AAMA 2605)			

STRUCTURAL INTEGRITY

Longer horizontal mullions resulting in greater spans for projects.
Chart based on 20 PSF windload.

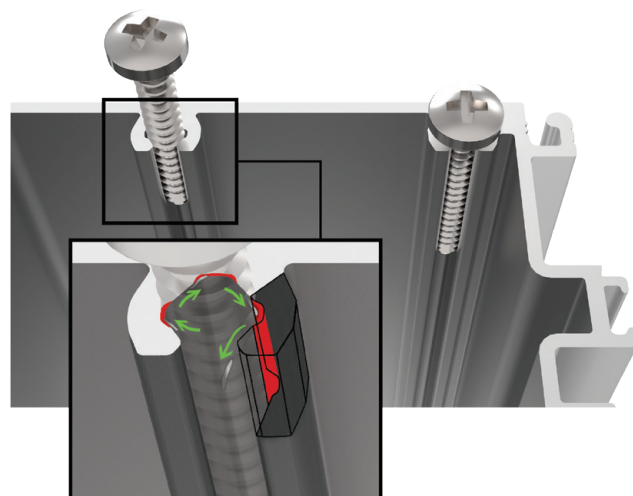
WIND LOAD PERFORMANCE COMPARISON YES 60 FI vs. YES 45 FI



FASTER INSTALLATION

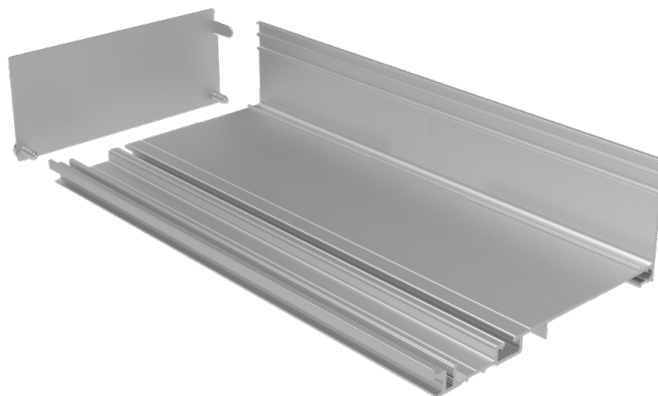
Diamond Shaped Screw Splines

- Reducing structural stress at fastener head connection helps prevent any screw breaks
- Eliminates the need for wax dipping
- Chip relief allows for quicker screw driving, resulting in reduced fabrication time



INDUSTRY LEADING SILL FLASHING

- No Blind Seals - no secondary penetration of sill and flashing
- Taller back leg - enhanced water resistance (10 PSF) in the field, and in field water testing
- Patented 3 point attachment of end dam for reduced transit damage. Remains intact and sealed throughout life of the building
- No sill anchoring required if end reaction less than 500 lbs.



Additional information including CAD details, CSI specifications, Test Reports and Installation instructions are available online at:
www.ykkap.com/commercial/product/storefronts/yes-60-fi/