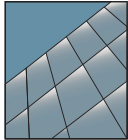


YSK 750

Mid-Rise Sloped Glazing System for Curtain Walls



SLOPED GLAZING

Product Description

The YSK 750 is a complete slope glazed framing system designed for curtain walls with long rafters.

The system incorporates an integral gutter that may be set directly down onto a curb or on top of a vertical curtain wall. The unique hinge will accommodate slope angles from fifteen to sixty degrees and provide positive anchorage for the slope. Purlins (horizontal members) are available with a variety of face covers to meet design requirements or may be structural silicone glazed for a clean, uninterrupted appearance.

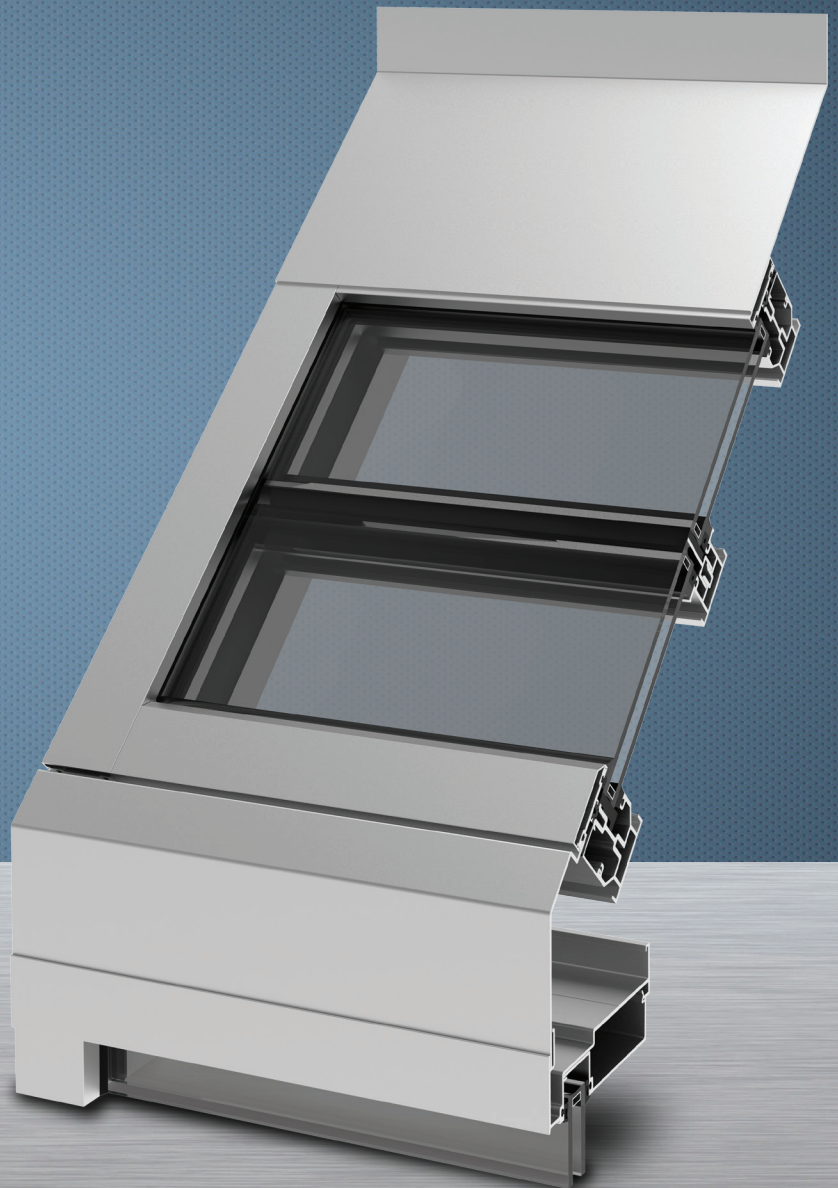
This is available in stock lengths or may be factory engineered and fabricated.

Product Options & Features

- Angle of slope can be tailored to your project
- Outside Glazing of 1" or 5/16"
- Easy to assemble with YKK AP Curtain Walls
- Variety of face covers to match your design



Quality
inspires®

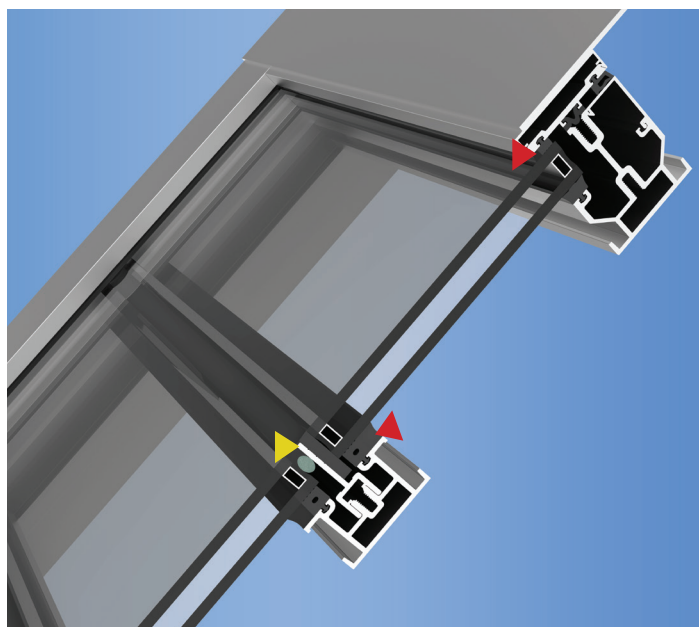
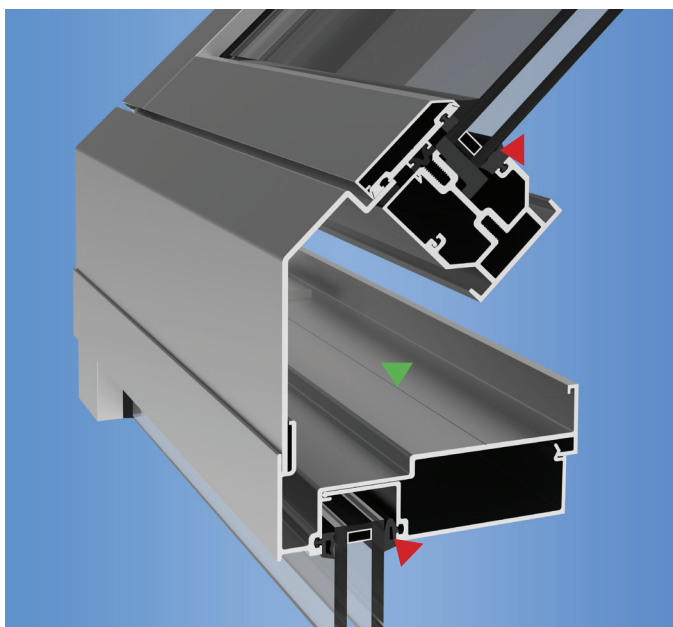


YSK 750

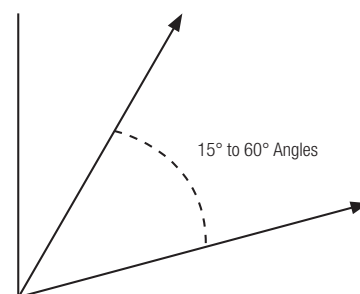
SYSTEM SPECIFICATIONS

System Sightline	Base Depth	Glazing & Config	Glass	Air Infiltration	Water Infiltration	Thermal Performance	Acoustical Performance
Angle Dependant	7-1/2"	Outside & Front	1" IGU with Low-E (C.O.G. U-factor: 0.29)	0.06 CFM/FT ² (1.10 m ³ /h-m ²) @ 6.24 PSF (299 Pa)	Static: 15 PSF (718 Pa) Dynamic: 15 PSF (718 Pa)	N/A	N/A
Testing Standards				ASTM E 283	ASTM E 331 & AAMA 501.1	NFRC 100 & AAMA 1503	ASTM E 90 & 1425
Optional Depths				5/16" Glass and 1" Glass options are available with our sloped system			
Available Finishes				Factory Anodized (AAMA 612) and Organic Paints (AAMA 2604 & AAMA 2605)			

A CLOSER LOOK



- ▶ **INTEGRATED GUTTER** - Built in the slope system that will sit flush on a curtain wall or slab to help redirect any water.
- ▶ **TAILORED GLAZING** - Wet and Dry Glazing combinations ensure the best support for the sloped glazing applied to the system
- ▶ **INTEGRATED STRUCTURAL SUPPORT** - Carry dead load of the insulating glass, diverting load away from struts



Additional information including CAD details, CSI specifications, Test Reports and Installation instructions are available online at:
www.ykkap.com/commercial/product/sloped-glazing/ysk-750/