

P-2101/P-2242/H-3211

Standard Three-Point Locking System

Description

- Adams Rite® series Hookbolt Lock, Header and Threshold Bolts.
Standard backset is 1-1/2" (medium & wide stile doors).
- Assembly accepts any standard 1-5/32" diameter mortised cylinder, thumbturn cylinder, or dummy cylinder. All operating cylinder types require MS cam.
- Requires faceplate on single door.
- Considered maximum security for YKK AP standard and upgraded locking devices.

Usage

P-2101: Hook Lock

(1-1/2" backset): Models 35D/50D, 40M/50M, 35H/50H

P-2242: Header Bolt

H-3211: Threshold Bolt

Dimensions

Case: Stainless Steel corrosion resistant plating

Bolt: 5/8" x 1-3/8" with 13/16" throw

Faceplate: 1" x 6-7/8"

Material Composition

Aluminum Alloy, Stainless Steel, Steel and Mill Finish

Finishes

Mill

Vendor of Hardware

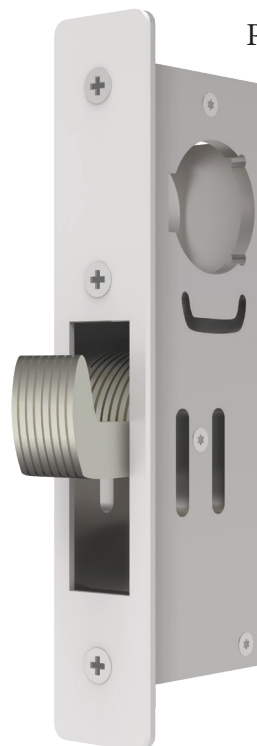
Assa Abloy

Vendor Part Numbers

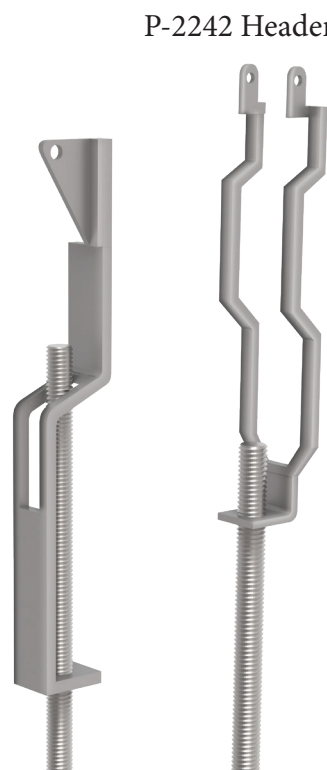
Adams Rite® MS-1850 - Hookbolt Lock (P-2101)

Adams Rite® 4016 - Header Bolt (P-2242)

Adams Rite® 4015 - Threshold Bolt (H-3211)



P-2101 Hookbolt Lock



P-2242 Header Bolt

H-3211 Threshold Bolt



Our ProTek single 35H/50H entrance doors with non-emergency egress, employ a three point locking system to ensure that they remain secured during the strong cyclical winds associated with hurricanes. The three point locking system features a single actuation system for ease of use, keyed exterior cylinder, and interior thumbturn.