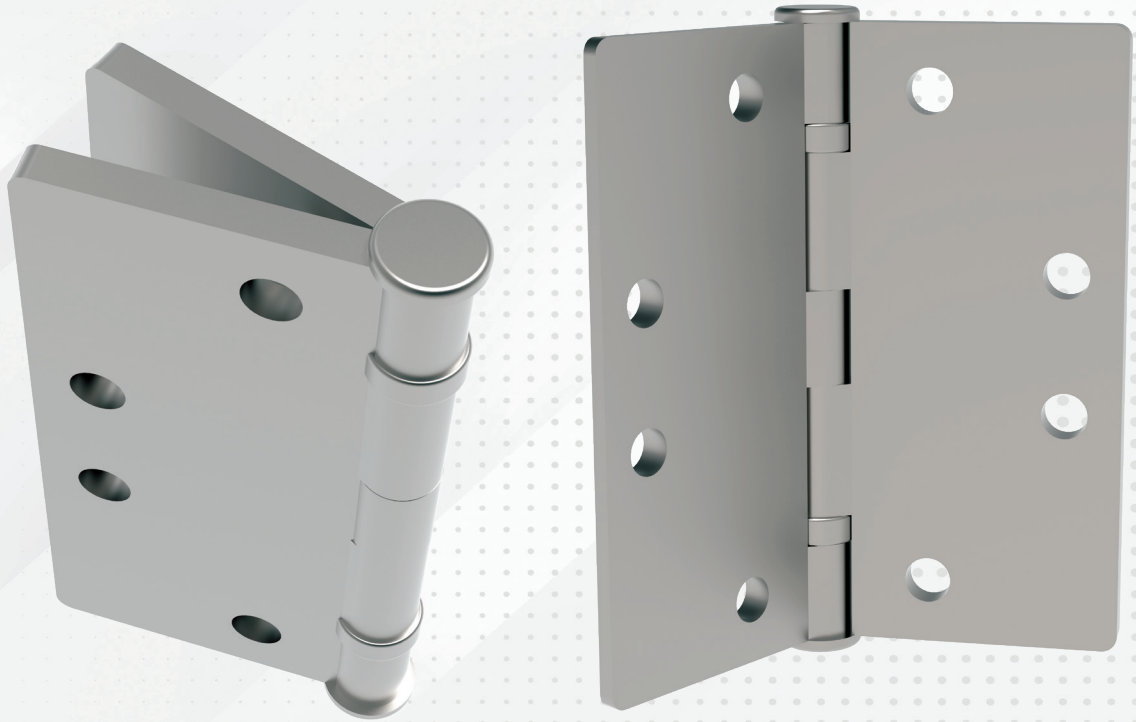


**YKK  
AP**®

**Commercial**  
Standard Entrance  
Hardware



## Description

- Commercial quality five knuckle, two ball bearing raceway construction type stainless steel; enclosed hinge barrel with button tips incorporating non-rising removable steel pin.
- Radius corner hinge. Standard template butt, 4-1/2" X 4" by 0.134" thickness (114.3mm by 101.6mm by 3.4mm).
- Tapped back-up reinforcing plates are provided for each part of the hinge.
- Non-removable pin with button tip and plug.

## Compatible Entrances

20D/35D/50D, 25T/35T/50T, 25FD, 35XT/50XT & 35H/50H

## Material Composition

304 Stainless Steel with Stainless Steel Pin

## Finishes

Coated Finish: 628 Clear or 335 Black

## Application

- Butt hinge fully mortised into door hinge stile and frame hinge jamb.
- Back-up or reinforcing plates are used in both frame jamb and hinge stile.
- Use intermediate butt (1-1/2 pair per leaf) for doors in high traffic areas or for doors over 7'-6" high.

## Hardware Vendor



## Vendor Part or Series

Hager A796 Storefront - A796 362D-NRP (Clear)  
Hager A796 Storefront - A796 L1-NRP (Black)

# P-1300

Standard Butt Hinge - 4-1/2" x 4"