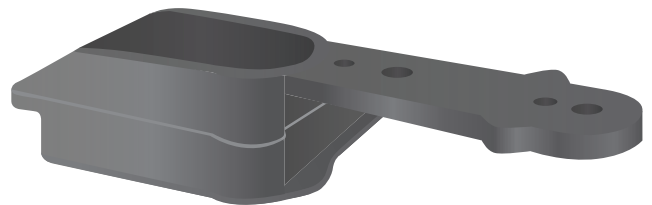


H-6209/6210/6211/6212

Standard Overhead Concealed Closer Kit for Center Pivot

Description

- Single and double acting non-handed concealed door closer. Closer fits 1-3/4" x 4" (44.5mm by 101.6mm) transom bar or header. Closers have 90 degree or 105 degree back stop with optional hold open device, (specify).
- Closers are two speed type with factory preset closing speed and adjustable latching speed.
- Closers are center pivoted type, single or double acting, or offset type for use with standard offset pivots or butt hinges.
- Available with light and heavy duty spring and also with adjustable spring.



Part Numbers

H-6209: OHCC 105° HO

H-6210: OHCC 105° NHO

H-6211: OHCC 90° HO

H-6212: OHCC 90° NHO

Usage

20D/35D/50D and 40M/50M

Material Composition

Aluminum Alloy and Mill Finish

Finishes

Spray painted finish: Silver (Aluminum) or Black

Vendor of Hardware

Calibre

Vendor Part Numbers

2200 Series with 3010-K and 3010-GE

