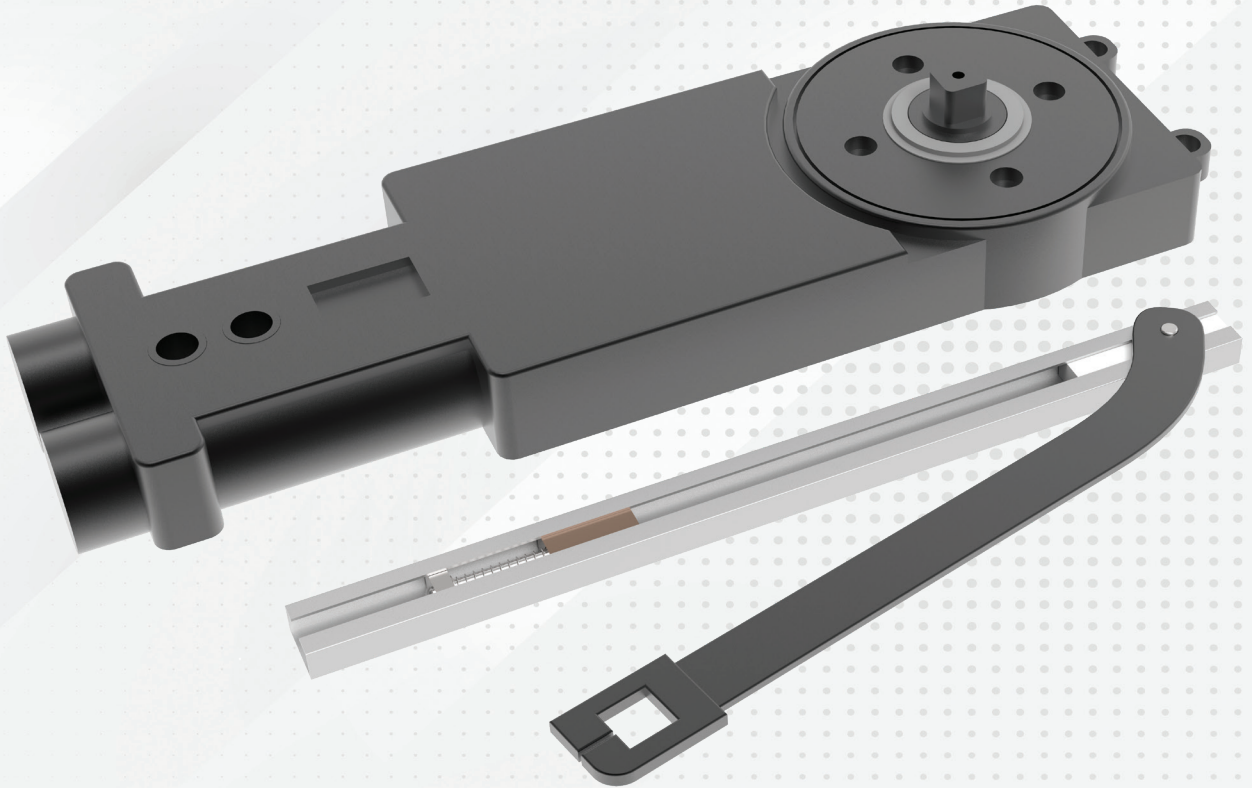


**YKK
AP**®

Commercial
Standard Entrance
Hardware



Description

- Single and double acting non-handed concealed door closer. Closer fits 1-3/4" x 4" (44.5mm by 101.6mm) transom bar or header.
- Closers have 90 degree or 105 degree back stop with optional hold open device (specify).
- Closers that are two-speed type with a preset closing speed and adjustable latching speed.
- Closers that are offset type for use with standard offset pivots or butt hinges.
- Available with light and heavy duty spring and also with adjustable spring.

Compatible Entrances

20D/35D/50D, 25T/35T/50T, 40M/50M, 35XT/50XT
& 35H/50H

Material Composition

Aluminum Alloy with Mill

Finishes

Coated Finish: 628 Clear or 335 Black

YKK AP Part Number

H-6205: OHCC with 105° Hold Open (HO)
H-6206: OHCC with 105° No Hold Open (NHO)
H-6207: OHCC with 90° Hold Open (HO)
H-6208: OHCC with 90° No Hold Open (NHO)

Hardware Vendor



Vendor Part or Series

Calibre 1100 and 3300 Series

H-6205 / H-6206 / H-6207 / H-6208

Standard Overhead Concealed Closers (OHCC) and Kit for Offset Pivots/Butt Hinges