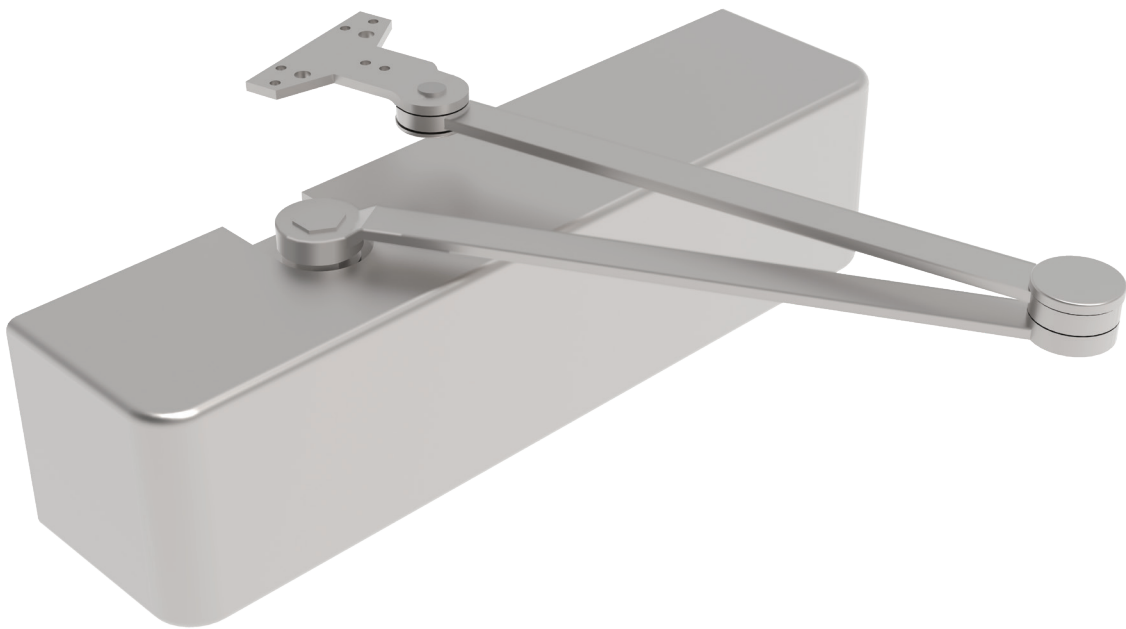


H-6104

Standard Surface Mounted Closer



Description

- Full rack and pinion type with cast aluminum body using non-gumming and non-freezing hydraulic fluid. Closer has two valves, hex key operated to independently regulate closing and latching speeds. Adjustable backcheck is standard on all closers. Closer meets Federal Specs FF-H-121C.
- Closers are non-handed with or without hold open arms (specify one). All mounting brackets are included.
- Closers are U.L. listed and meet ANSI A117.1 standards.
- Closers with optional adjustable spring power for opening force size settings 1 thru 6 are also available.

Usage

Model 35H/50H Entrances

Material Composition

Aluminum Alloy

Finishes

Spray painted finish: Silver (Aluminum) or Dark Bronze

Part Number

H-6104: YKK AP Standard for Model 35H/50H

Vendor of Hardware

Allegion

Vendor Part Number

LCN Closers 4040

Certifications

BHMA Certified ANSI A156.4, adjustable sizes 1-6
ADA Compliant ASNI A117.1 Accessibility Code
UL/cUL Listed for up to 3 hours
UL10C Positive Pressure Rated
UL10B Neutral Pressure Rated
Lifetime Warranty