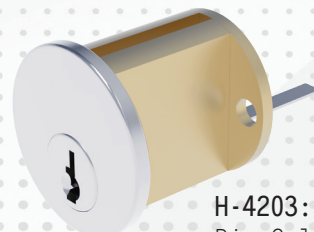


**YKK
ap****Commercial**
Standard Entrance
Hardware

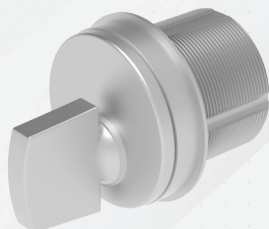
H-4201: (All Doors except T and M)
5-Pin Kit - 2 Cylinder Locks

H-4202: (All Doors except T and M)
5-Pin Cylinder - 1 Lock Only

P-48541: (25T/35T/50T and 40M/50M)
5-Pin Cylinder - Lock Only

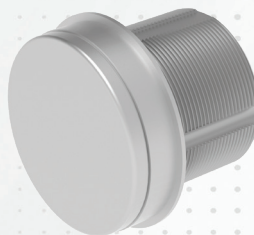


H-4203:
Rim Cylinder

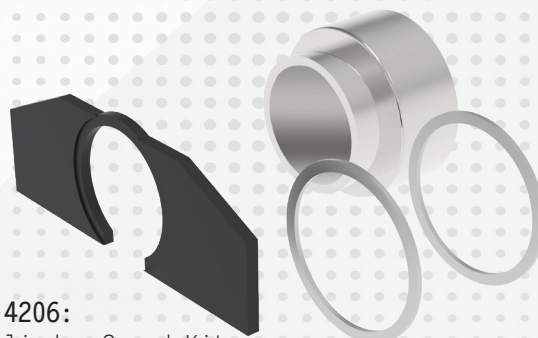


H-4204: (All Doors except T and M)
Thumbturn Cylinder

P-48542: (25T/35T/50T and 40M/50M)
Thumbturn Cylinder



H-4205:
Dummy Cylinder



H-4206:
Cylinder Guard Kit

Description

- 5-Pin - mortised, 1-5/32" (29.4mm) diameter.
- Standard Cylinders are key operated on the exterior and thumbturn operated on the interior.
- Blank or Dummy Cylinders are available as an option instead of locking.
- Keyed alike cylinders available, when specified.
- Master keying and unique keying systems are special order and manufacturing must be contacted.
- Cylinder Guard is a kit including tapered and hardened steel collar with hardened steel retainer plate.
- Cylinder Guard's collar designed to protect the vulnerable softer brass cylinder. Guard held in place with retainer plate for extra security.

Compatible Entrances

All YKK AP Entrances

Material Composition

Aluminum Alloy and Brass

Finishes

Cylinder Caps: 628 Clear or 335 Black

Hardware Vendor

**YKK
ap**

YKK AP Part Numbers

H-4201: 5-Pin Cylinder - Kit
H-4202: 5-Pin Cylinder - Lock Only
P-48541: 5-Pin Cylinder - Lock Only
H-4203: RIM Cylinder
H-4204: Thumbturn Cylinder
P-48542: Thumbturn Cylinder
H-4205: Dummy Cylinder
H-4206: Cylinder Guard Kit

21-5033-00

H-4200 Series

Standard Locking Cylinder Sets