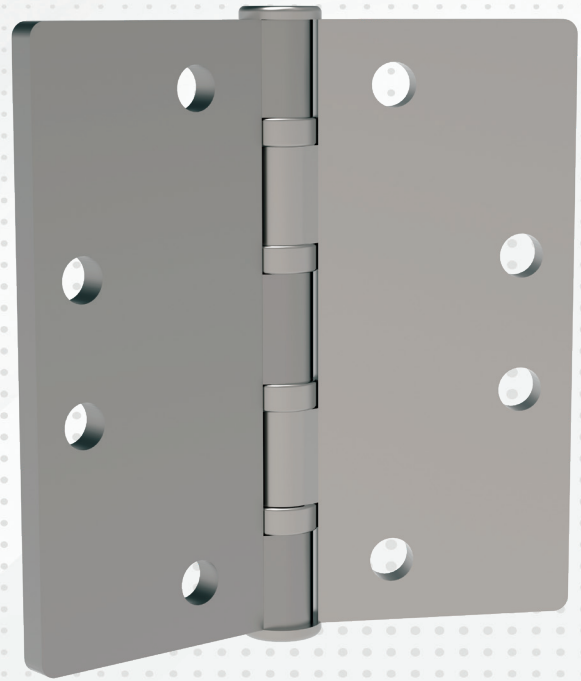
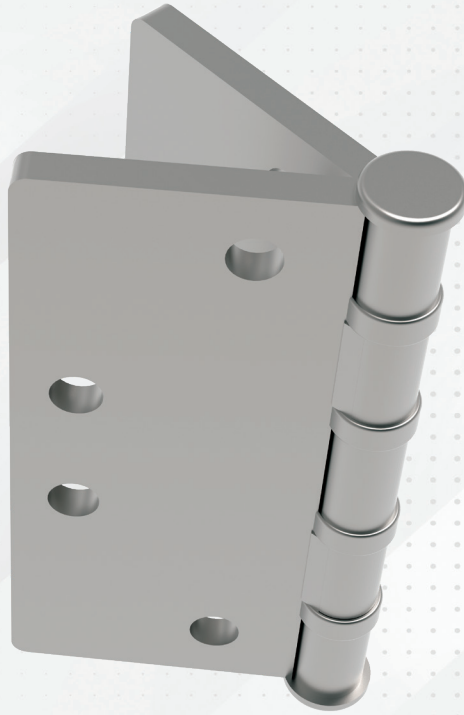


**YKK  
ap**®

**Commercial**  
Standard Entrance  
Hardware



## Description

- Grade 1 Heavy Weight quality. Five knuckle, four ball bearing brass with stainless steel pin. Testing in conformance with ANSI-A156.1-81.
- Pin is non-rising with an optional non removable pin (NRP) available.
- Radius corner hinge. 4-1/2" X 4-1/2" by 0.180" thickness (114.3mm by 114.3mm by 4.6mm).
- Tapped back-up reinforcing plates are provided for each part of the hinge.

## Compatible Entrances

40M/50M

**Optional:** 20D/35D/50D, 25T/35T/50T, 25FD, 35XT/50XT & 35H/50H

## Material Composition

304 Stainless Steel with Stainless Steel Pin

## Finishes

Coated Finish: 628 Clear or 335 Black

## Application

- Fully mortised into door hinge stile and frame hinge jamb. On 40M/50M, hinge is mortised into frame, but requires no backer plate for extra strength.
- Back-up or reinforcing plates are used whenever mortising of hinge is required.
- Intermediate Hinge is standard on all 40M/50M doors and recommended on high traffic applications. Doors over 7'-6" high also require intermediate hinges.

## Hardware Vendor



## Vendor Part or Series

Hager A797 Storefront - A797 362D-NRP (Clear)  
Hager A797 Storefront - A797 L1-NRP (Black)

21-5025-00

# P-1303

Standard Heavy Duty Butt Hinge - 4-1/2" x 4-1/2"