

# YOV SSG

Zero Sightline, Operable Vent for Structural Silicone Glazed Curtain Wall



## OPERABLE WINDOWS

### Bringing the Outside In

The YOVS SSG Vent enables designers to provide ventilation to architectural aluminum wall systems without adding the large sight line of traditional windows, as it seamlessly blends with the surrounding framing system to become virtually invisible when viewed from the exterior. This product is an excellent choice for schools, offices and other commercial structures requiring ventilation. The YOVS SSG provides excellent ventilation that meets the 2012 International Energy Conservation Code (IECC) through Zone 6 with standard Low E (U = 0.39 COG).

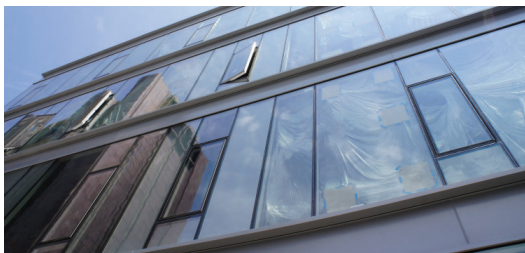
### Product Options & Features

- Glazes into 4-sided Curtain Wall or Window Wall (Field or Shop Glazed) or any 1, 2, or 3-sided vertical combination of SSG and or fully Captured systems
- Configurations: Casement Out & Project Out
- Glass is bonded to vent's frame without need for additional retainers, providing a clean look
- Tinted glass option for more aesthetic look
- Factory glazing and screens available
- YKK AP Heavy Duty, Stainless Steel hinges and Standard White Bronze cast locking hardware
- Vent and Frame Multi-Point Locks available

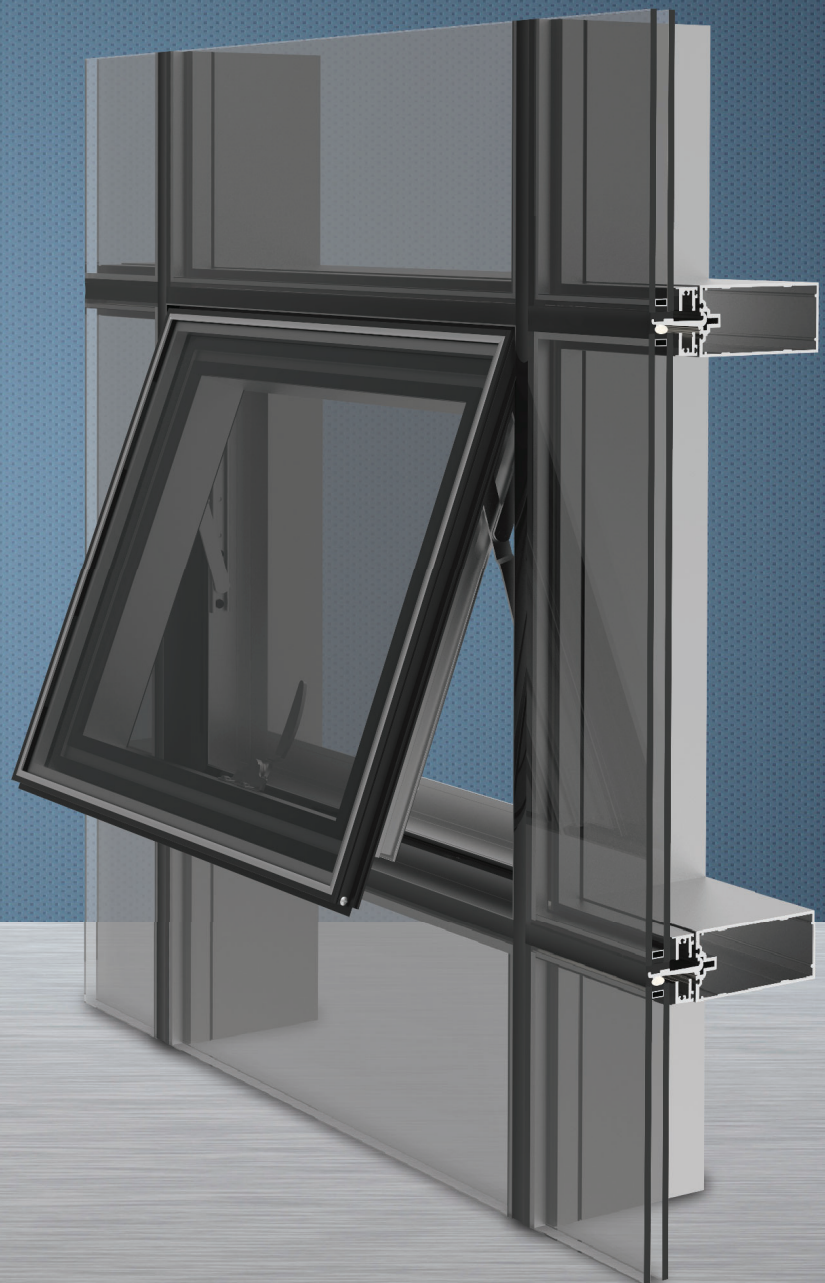
**U-Factor** Values as low as 0.31\*

**CRF** Minimum 73<sub>frame</sub> & 72<sub>glass</sub>

\*Based on AAMA 507. Lower values may be achieved through further simulation.



Quality  
inspires®



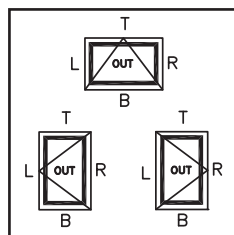
## SYSTEM SPECIFICATIONS

System Sightline	Base Depth	Glazing	Air Infiltration	Water Infiltration	Acoustical Performance
0"	2-3/4"	1" IGU with Low-E (C.O.G. U-factor: 0.29)	0.10 CFM/FT² (1.85 m³/h·m²) @ 6.24 PSF (299 Pa)	Static: 15 PSF (720 Pa) Dynamic: 15 PSF (720 Pa)	Std STC: 35 Std OITC: 28
					Lam STC: 36 Lam OITC: 28
Testing Standards			ASTM E 283	ASTM E 331 & AAMA 501	ASTM E 90 & ASTM E 1425
Oversized Vent Option			Up to 58 x 93 with AW Performance Grade 55		
Structural Performance			AW Performance Grade 70	AW Performance Grade 100 with Project Out and VMPL Hardware	
Available Finishes			Factory Anodized (AAMA 612) and Organic Paints (AAMA 2604 & AAMA 2605)		

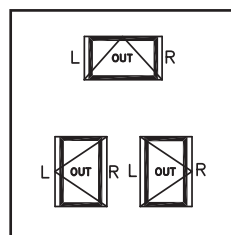
Thermal Performance						
1" IGU	BTU/hr·ft <sup>2</sup> ·°F					
<b>C.O.G U-Factor</b>	0.30	0.28	0.26	0.24	0.22	0.20
<b>Awning (Outswing)</b>	0.42	0.40	0.38	0.37	0.35	0.33
<b>Casement (Outswing)</b>	0.39	0.38	0.36	0.34	0.33	0.31
<b>Testing Standards</b>	AAMA 507					

CRF	
Frame	Glass
73	73
73	72
AAMA 1503	

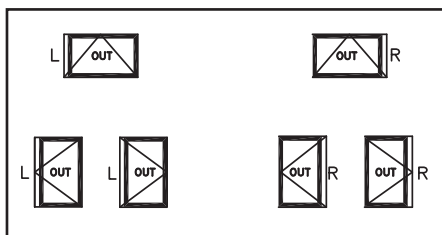
### 4-sided SSG



### 2-sided SSG Vertical



### 1-sided SSG Vertical



## HARDWARE

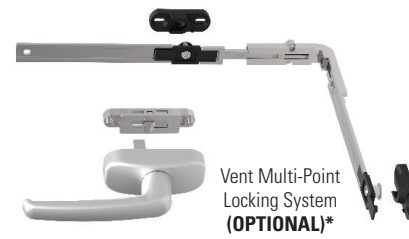
Cam Handle Lock System  
(STANDARD)



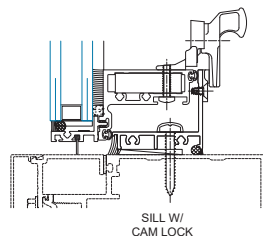
Roto Handle for Project-Out  
(OPTIONAL)



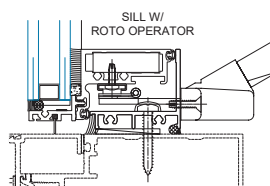
Frame Multi-Point Locking System  
(OPTIONAL)



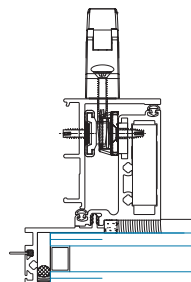
\*STANDARD for AW 100



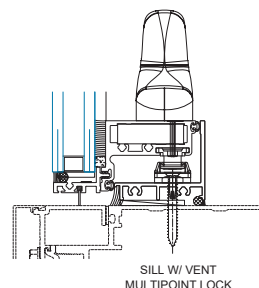
SILL W/ CAM LOCK



SILL W/ ROTO OPERATOR



JAMB W/ FRAME MULTI-POINT LOCK



SILL W/ VENT MULTIPOINT LOCK

**Also Available:** Wicket Screens (10" Door or Full) and a Limit Device (Approved for NYC)

Additional information including CAD details, CSI specifications, Test Reports and Installation instructions are available online at:

[www.ykkap.com/commercial/product/architectural-windows/yov-ssg/](http://www.ykkap.com/commercial/product/architectural-windows/yov-ssg/)