

YES SSG Vent

Zero Sightline Operable Vent for Storefront and Wall Systems



OPERABLE WINDOWS

Bringing the Outside In

The YES Structural Silicone Glazed (SSG) Vent enables designers to provide ventilation to architectural aluminum wall systems without adding the large sight line of traditional windows. This product is an excellent choice for schools, offices and other commercial structures requiring ventilation. The vent has no sightline, meaning it seamlessly blends in with the surrounding framing system to become virtually invisible when viewed from a distance.

Product Options & Features

- Glass is bonded to vent's frame without need for additional retainers, providing a clean look
- Designed for use with Storefront, Window Wall and Curtain Wall applications
- AAMA/WDMA/CSA 101/I.S.2/A440-08
 - ◆ CW-PG60 rated
- Configurations: Casement Out or Project Out
- Accepts 1" Insulating Glass
- Factory glazing and screens available
- YKK AP Heavy Duty, Stainless Steel hinges and Standard White Bronze cast locking hardware

U-Factor Values as low as 0.39*

CRF Minimum 55_{frame} & 65_{glass}

*Based on AAMA 507. Lower values may be achieved through further simulation.



**YKK
ap** | Quality
inspires®



YES SSG Vent

SYSTEM SPECIFICATIONS

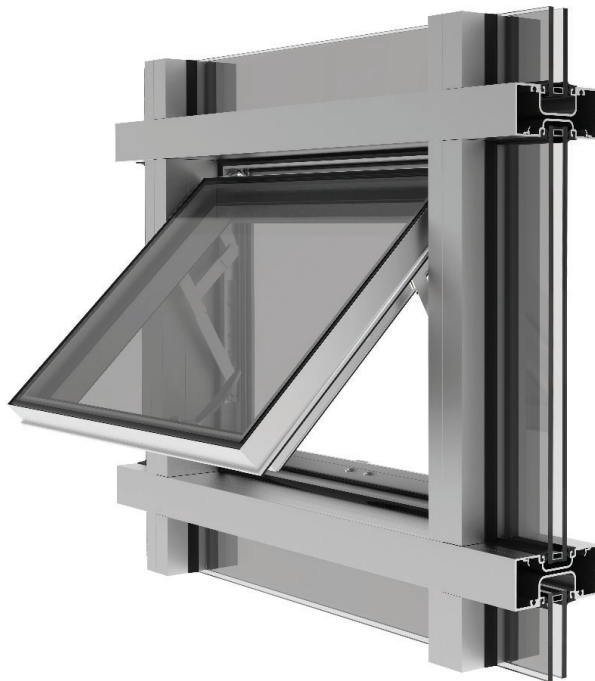
System Sightline	Base Depth	Glazing	Air Infiltration	Water Infiltration	Acoustical Performance
0"	2-3/4"	1" IGU with Low-E (C.O.G. U-factor: 0.29)	0.10 CFM/FT ² (1.85 m ³ /h·m ²) @ 6.24 PSF (299 Pa)	Static: 15 PSF (720 Pa) Dynamic: 15 PSF (720 Pa)	Casement Out STC: 34 Casement Out OITC: 27
Testing Standards			ASTM E 283	ASTM E 331 & AAMA 501	ASTM E 90 & ASTM E 1425
Structural Performance			AAMA/WDMA/CSA 101/I.S.2/A440-08 CW Performance Grade 60		
Available Finishes			Factory Anodized (AAMA 612) and Organic Paints (AAMA 2604 & AAMA 2605)		

Thermal Performance						
1" IGU	BTU/hr-ft ² ·°F					
C.O.G U-Factor	0.30	0.28	0.26	0.24	0.22	0.20
Awning (Outswing)	0.47	0.45	0.44	0.42	0.41	0.39
Casement (Outswing)	0.47	0.45	0.44	0.42	0.41	0.39
Testing Standards	AAMA 507					

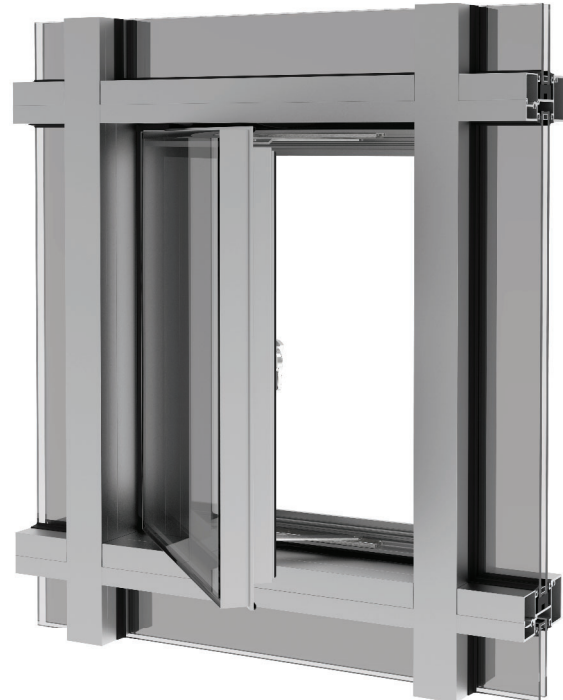
CRF	
Frame	Glass
55	65
57	69
AAMA 1503	

CONFIGURATIONS & HARDWARE

Captured Project Out



Captured Casement



Cam Handle
Lock System
(STANDARD)



Additional information including CAD details, CSI specifications, Test Reports and Installation instructions are available online at:
www.ykkap.com/commercial/product/architectural-windows/yes-ssg-vent/