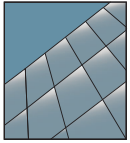


# YCW Veneer Wall

Low to Mid-Rise Gutter Curtain Wall System for Steel Anchoring



## CURTAIN WALL SYSTEM

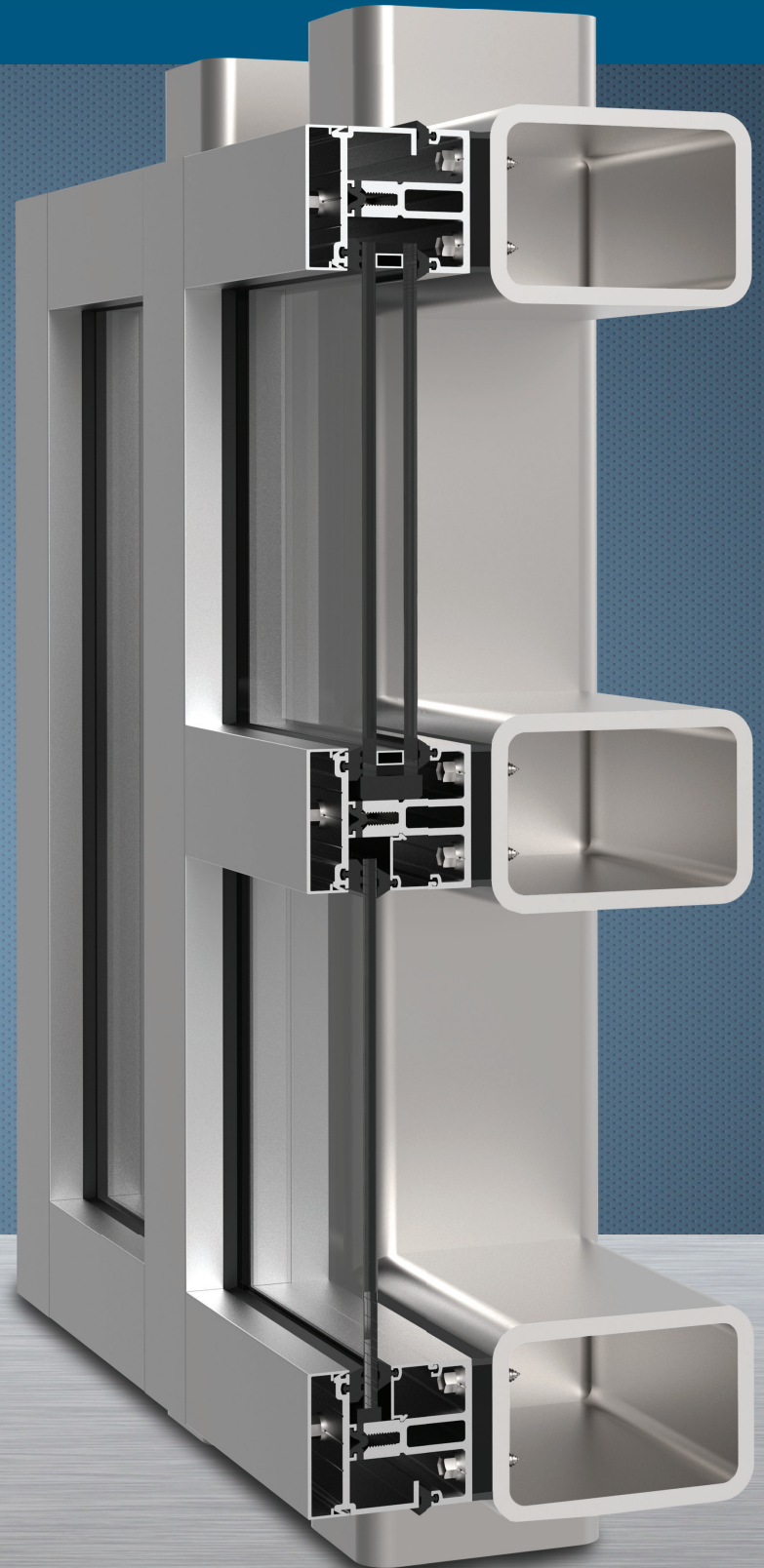
### Cost Effective Veneer Design

The YCW Veneer Wall is a low to mid rise gutter system that is designed to be anchored to the steel structure of a building. Available in either a 2" or 2-1/2" gutter width, the YCW Veneer Wall can accept both monolithic and insulated glazing. Optional snap-on battens or face covers are available, depending on the requirements of the architect.

Veneer Walls tend to be more aesthetic than engineered since they rely on a steel support structure to help with the load-bearing compared to traditional Curtain Walls. As a result, Veneer Walls are more cost effective and are assembled easier with proper application, especially if thermal, structural and seismic testing conditions are less stringent.



Quality  
inspires®



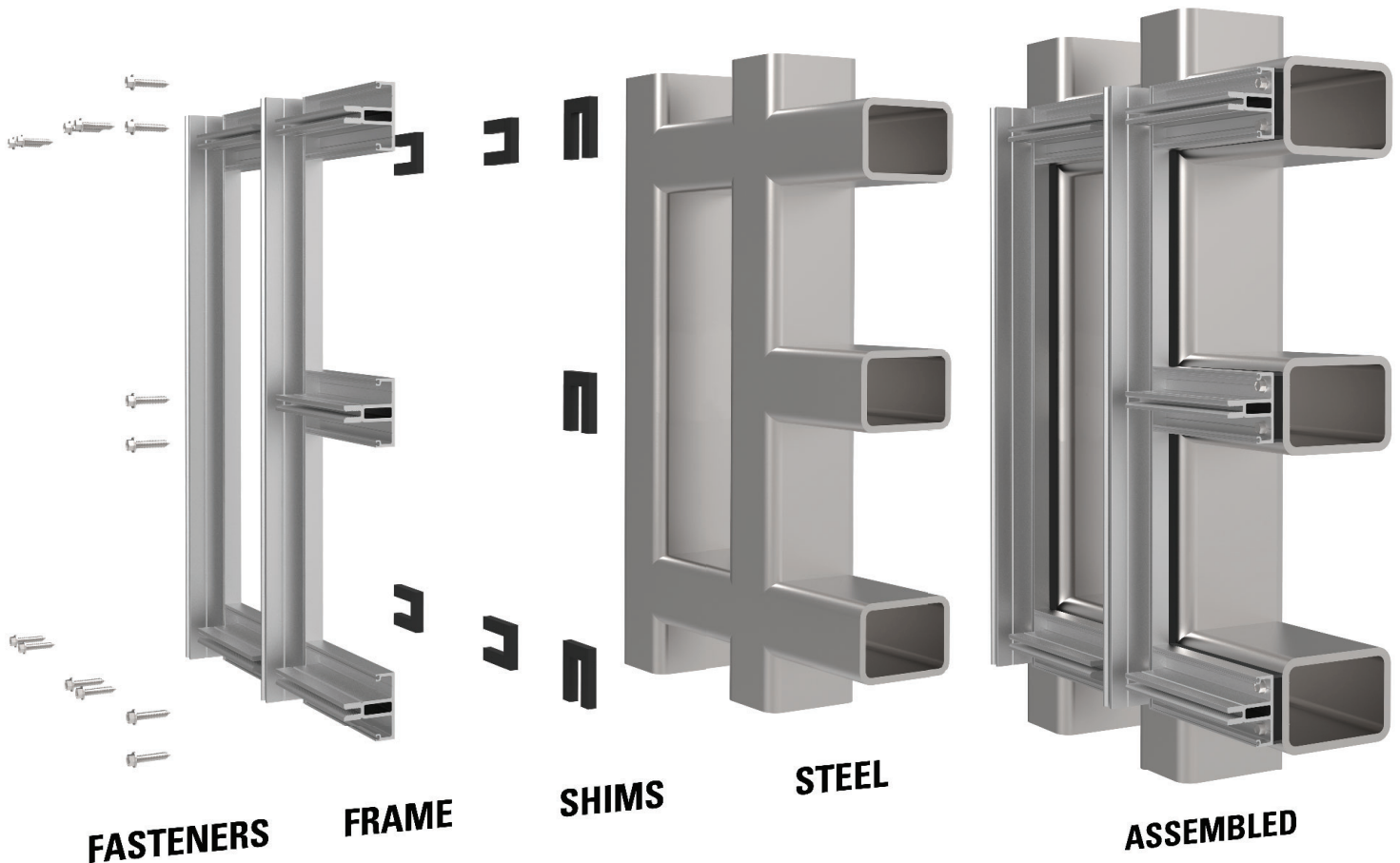
# YCW Veneer Wall

## SYSTEM SPECIFICATIONS

System Sightline	Base Depth	Glazing & Config	Glass	Air Infiltration	Water Infiltration	Thermal Performance
2" or 2-1/2"	2-3/8" or 3"	Outside & Front Set	1" IGU with Low-E (C.O.G. U-factor: 0.29)	0.06 CFM/FT <sup>2</sup> (1.10 m <sup>3</sup> /h-m <sup>2</sup> ) @ 6.24 PSF (299 Pa)	<b>Static:</b> 8 PSF (383 Pa) <b>Dynamic:</b> 8 PSF (383 Pa)	<b>U-factor:</b> 0.47 BTU/HR•FT <sup>2</sup> •°F* <b>CRF:</b> Minimum of 68 on frame**
<b>Testing Standards</b>				ASTM E 283	ASTM E 331 & AAMA 501.1	* NFRC 100 & ** AAMA 1503
<b>Available Finishes</b>				Factory Anodized (AAMA 612) and Organic Paints (AAMA 2604 & AAMA 2605)		

## VENEER ATTACHMENT

Shims are placed on the steel to make the surface flush and fasteners are used securing the frame in place creating some spacing. Sealant is then applied over the shims for added stability and protection. After, the rest of the system is put together and the face covers snapped in.



Additional information including CAD details, CSI specifications, Test Reports and Installation instructions are available online at:  
[www.ykkap.com/commercial/product/curtain-walls/ycw-veneer/](http://www.ykkap.com/commercial/product/curtain-walls/ycw-veneer/)