

YCW 750 XT SSG

Advanced Thermal, Structural Silicone Glazed Curtain Wall System

enerGfacade®



Energy Saving Curtain Wall with Multiple Glazing Options

The YCW 750 XT SSG yields the same best-in-class thermal performance as the YCW 750 XT system and exceeds not only current codes, but also the most stringent green building codes and standards in the market today. This vertical SSG system has captured 2-1/2" sightlined horizontals utilizing MegaTherm® technology with structural polyamide struts that hold standard 1" glazing units. To ensure long-term structural integrity, the deadload of the insulating glass rests on integrated structural supports, diverting this load away from the thermal barriers.

Product Options & Features

- Integrates with our ThermaShade® and Luminance® Sun Control products
- Integrates in building's air-vapor barrier system
- Optional integral thermally broken sill flashing available (shown)
- Designed to accommodate glazings up to 1" standard**

**Contact YKK AP engineering for thicker glazing options

U-Factor Values as low as 0.30*

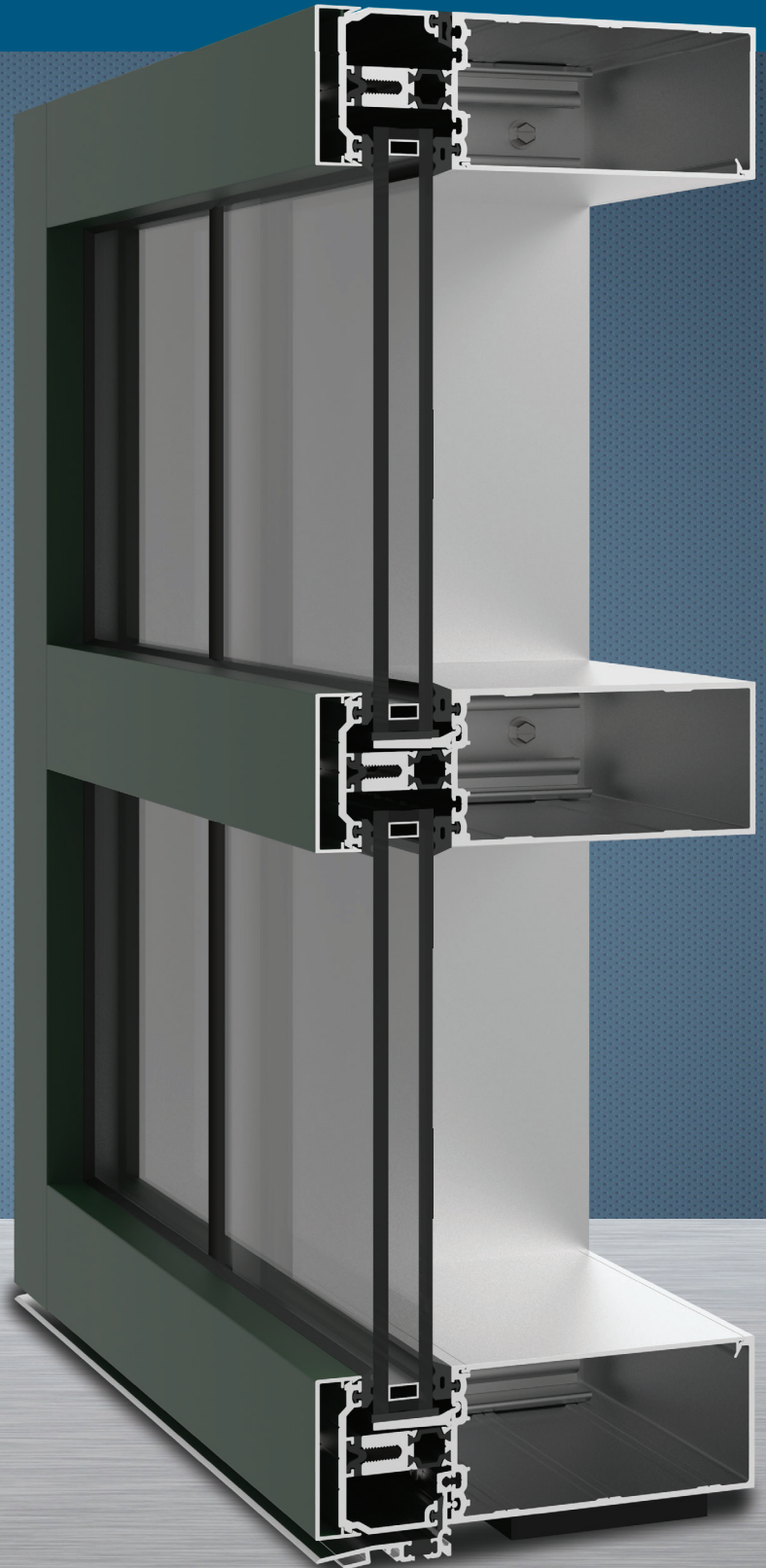
CRF Minimum 78_{frame} & 67_{glass}

*Based on AAMA 507. Lower values may be achieved through further simulation.



**YKK
ap**

Quality
inspires®



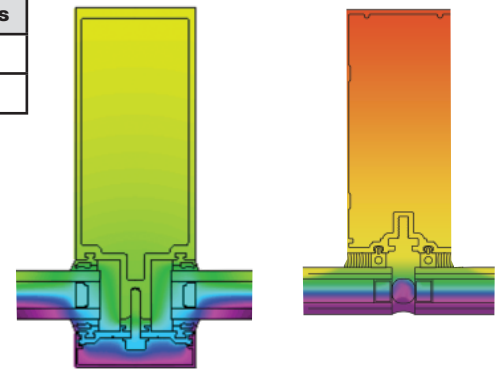
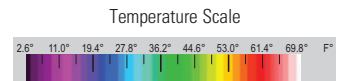
YCW 750 XT SSG

SYSTEM SPECIFICATIONS

System Sightline	Base Depth	Glazing & Config	Glass	Air Infiltration	Water Infiltration	Acoustical Performance
2-1/2"	7-1/2"	Outside & Front Set	1" IGU with Low-E (C.O.G. U-factor: 0.29)	0.06 CFM/FT ² (1.10 m ³ /h·m ²)	Static: 15 PSF (718 Pa) Dynamic: 15 PSF (718 Pa)	Std STC: 32 Std OITC: 27 Lam STC: 35 Lam OITC: 30
Testing Standards				ASTM E 283	ASTM E 331 & AAMA 501	ASTM E 90 & 1425
Optional Depths for Glazing				1" Glass - 6" to 9" 1-1/2" Glass - 6-1/2" to 9-1/2" 1-3/4" Glass - 6-3/4" to 9-3/4" 2" Glass - 7" to 10"		
Available Finishes				Factory Anodized (AAMA 612) and Organic Paints (AAMA 2604 & AAMA 2605)		

Thermal Performance						
1" IGU with LowE	BTU/hr·ft ² ·°F					
C.O.G. U-factor	0.30	0.28	0.26	0.24	0.22	0.20
SSG (2-Sided)	0.38	0.36	0.35	0.33	0.31	0.30
Testing Standards	NFRC 100					

CRF	
Frame	Glass
Not Tested	
AAMA 1503	



YCW 750 OG

YCW 750 XT SSG

Frame temperature comparison values based on 0° exterior, and 70° interior air temperatures.

ZOOM MULLION VIEW

- ▼ **DUAL THERMAL BARRIER** - Polyamide struts (6/6 with glass fibers on all three axes) and thermal isolator
- ▼ **WARMER INTERIOR SURFACES** - Greater occupant comfort and increased resistance to condensation, with CRF_f values up to 82
- ▼ **INTEGRATED STRUCTURAL SUPPORT** - Carry dead load of the insulating glass, diverting load away from polyamide struts
- ▼ **OPTIONAL INTEGRAL SILL FLASHING** - Diverts internally drained water away from adjacent building components at sill
- ▼ **OPTIONAL BREAK METAL INTERFACE** - Allows flashing to extend further from the building at the sill



Additional information including CAD details, CSI specifications, Test Reports and Installation instructions are available online at:

www.ykkap.com/commercial/product/curtain-walls/ycw-750-xt-ssg/