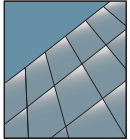


YUW 750 TU

Thermally Broken, Unitized Curtain Wall with Polyamide Plates



CURTAIN WALL SYSTEM

Product Description

The YUW 750 TU is a unitized wall system with polyamide plates designed to be assembled and glazed in a climate controlled environment for increased quality assurance of critical seals. Complete units are then shipped directly to the jobsite permitting rapid installation and dry-in of low to mid-rise commercial buildings. The YUW 750 TU also easily interfaces with sun shades for a greater sustainable design solution.

Product Options & Features

- Versatile Framing Design with captured and 4-sided structural silicone glazing (SSG)
- Polyamide and Barriers minimize Heat Transfer
 - ◆ Improved Occupant Comfort
 - ◆ Increased Condensation Resistance
- 90° inside and outside corners
- 3-way adjustable curtain wall anchors
- Simplified dimensions for frame and glass ease installation and gives an even, aesthetic look
- Dual Finish Capability (inside / outside finish)
- Optional substituted aluminum thermal barriers

U-Factor Values as low as 0.31*

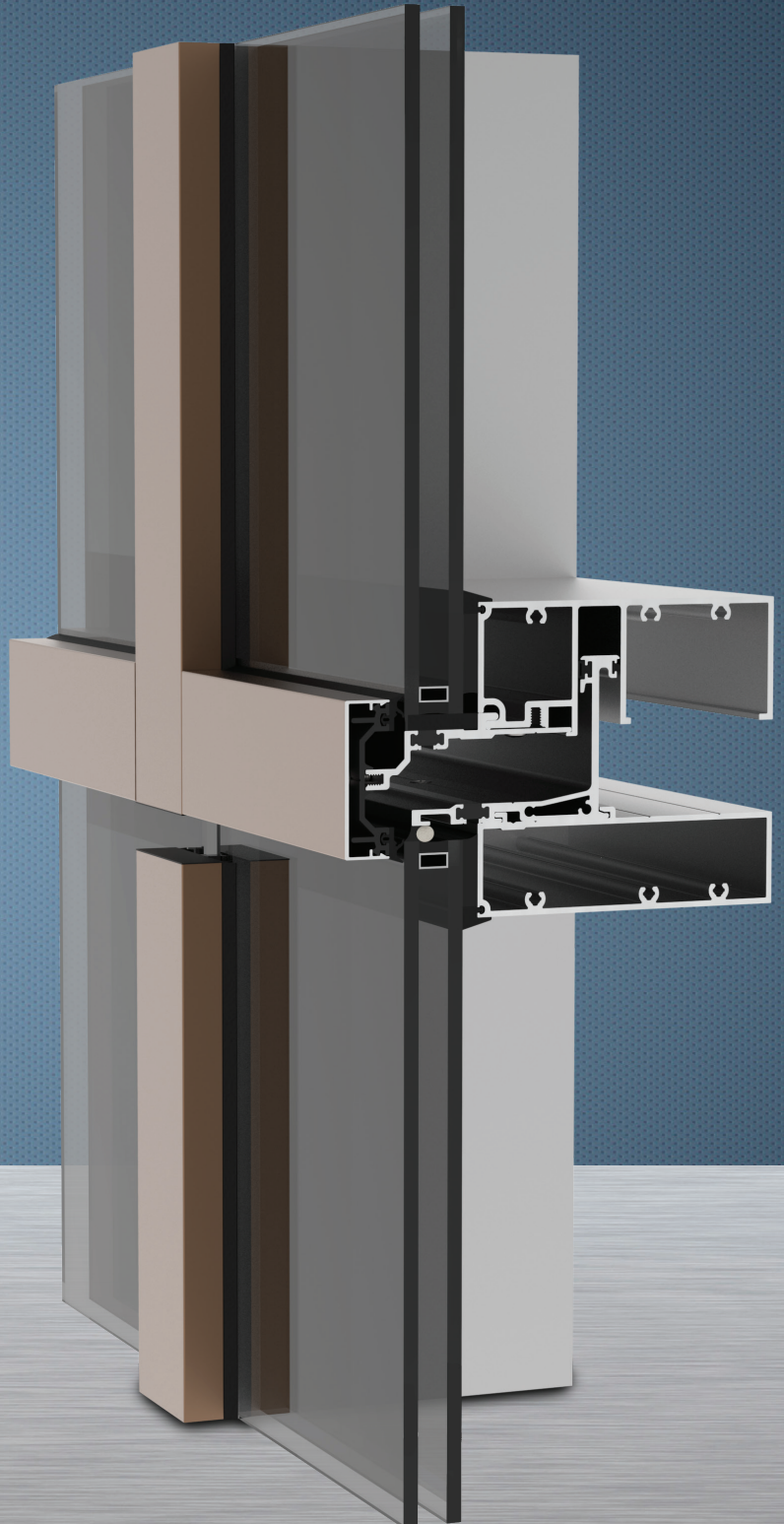
CRF Minimum 72_{frame} & 69_{glass}

*Based on AAMA 507. Lower values may be achieved through further simulation.



YKK
ap

Quality
inspires®



YUW 750 TU

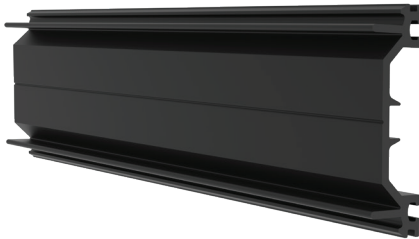
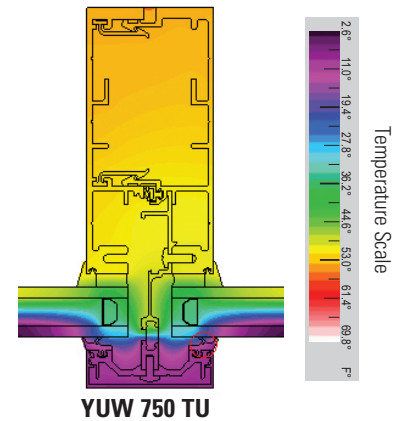
SYSTEM SPECIFICATIONS

System Sightline	Base Depth	Glazing & Config	Glass	Air Infiltration	Water Infiltration	Acoustical Performance
2-1/2"	7-1/2"	Outside or SSG & Front Set	1" IGU with Low-E (C.O.G. U-factor: 0.29)	0.06 CFM/FT ² (1.10 m ³ /h·m ²) @ 6.24 PSF (299 Pa)	Static: 20 PSF (958 Pa) Dynamic: 20 PSF (958 Pa)	Captured: Std STC: 32 Lam: 36 Std OITC: 27 Lam: 30 SSG: Std STC: 33 Lam: 36 Std OITC: 27 Lam: 30
Testing Standards				ASTM E 283	ASTM E 331 & AAMA 501.1	ASTM E 90 & 1425
Available Finishes				Organic Paints (AAMA 2604 & AAMA 2605)		

Thermal Performance						
1" IGU	BTU/hr·ft ² ·°F					
C.O.G U-Factor	0.30	0.28	0.26	0.24	0.22	0.20
Captured Polyamide	0.39	0.38	0.36	0.34	0.32	0.31
SSG Polyamide	0.40	0.39	0.37	0.35	0.34	0.32
Captured Aluminum	0.41	0.40	0.38	0.36	0.35	0.33
SSG Aluminum	0.41	0.39	0.37	0.36	0.34	0.32
Testing Standards	AAMA 507					

CRF	
Frame	Glass
76	71
74	69
73	72
72	70
AAMA 1503	

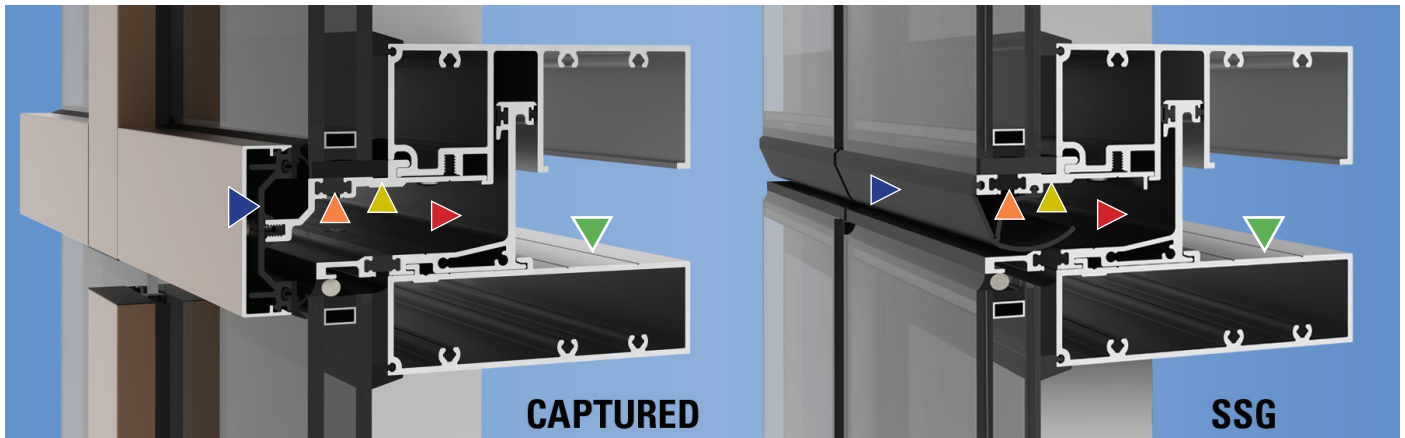
Frame temperature comparison values based on 0° exterior and 70° interior temperatures.



To help keep inside temperatures constant, YKK AP designed a low conductivity pressure plate to reduce heat transfer. These Polyamide 6/6 pressure plates are a superior option compared to handling alternative fiberglass products.

- ▼ **POLYAMIDE PLATE - CAPTURED / GASKET - SSG**
 Maximizes expansion / contraction; helps with insulation
- ▼ **PRESSURE EQUALIZATION**
 System manages water penetration through equalization
- ▼ **INTEGRATED STRUCTURAL SUPPORT**
 Carries deadload of the insulating glass

- ▼ **THERMALLY BROKEN**
 Pour & Debridged barrier provides separation for thermal performance
- ▼ **TWO PIECE HEAD DESIGN**
 Provides square cuts for horizontal members in lieu of notching



Additional information including CAD details, CSI specifications, Test Reports and Installation instructions are available online at:

www.ykkap.com/commercial/product/curtain-walls/yuw-750-tu/