



www.ykkap.com



Johns Hopkins All Children's Research Hospital - St. Petersburg, FL

YHC 300 SSG

Field/Stick Built

Impact Resistant, Blast Mitigating 2-Sided SSG Curtain Wall System

The **YHC 300 SSG** (Structural Silicone Glazed) is a high performance curtain wall system that can meet the requirements for Impact Resistance and Blast Mitigation. This system supports monolithic or insulated glazing. Face covers enable dual finishes on the exterior and interior for aesthetic advantages.

- Fully tested to ASTM 1886 / ASTM 1996 and TAS 201-203
- Florida Product Approvals for large and small missile including HVHZ
- 15/16" glass bite meets GANA guidelines of 1/4" clearance to reduce glass breaks
- Single and multi-span applications
- Accomodates monolithic & insulating glass
- Mullion options provide cost effective solutions across all pressures and designs

Configuration:

Glazing	Glass Setting	Installation
2-Sided SSG	Front Set	Shear Block

Thermal Values:

U-Factor:	Values as low as 0.37*
CRF:	Minimum 72 frame and 68 glass

*Based on AAMA 507 results from the YHC 300 OG. Thermal results should be similar. Lower values may be achieved through further simulation.



YHC 300 SSG SPECS		
Base Depth	7-11/16"	
Sightline	3"	
Config	2-Sided SSG and Outside / Front Set	
Tested Glass	1-5/16" Laminated IGU with Low-E (C.O.G. U-Factor: 0.29)	
Test	Results	Standards
Air Infiltration	0.06 CFM/FT ² (1.10 m ³ /h·m ²) @ 6.24 PSF (299 Pa)	ASTM E 283
Water Infiltration	Static: 20 PSF (958 Pa) Dynamic: 20 PSF (958 Pa)	ASTM E 331 AAMA 501
Acoustical (1-5/16" IGU)	Laminated STC: 37 Laminated OITC: 32	ASTM E 90 ASTM E 1425

Thermal Performance								
Mullion Depth	U-Factor - BTU/hr·ft ² ·°F						CRF	
3" x 7-11/16" (1-5/16" Laminated IGU)	0.46	0.44	0.42	0.41	0.39	0.37	72	68
Center of Glass	0.30	0.28	0.26	0.24	0.22	0.20	Frame	Glass
AAMA 507							AAMA 1503	

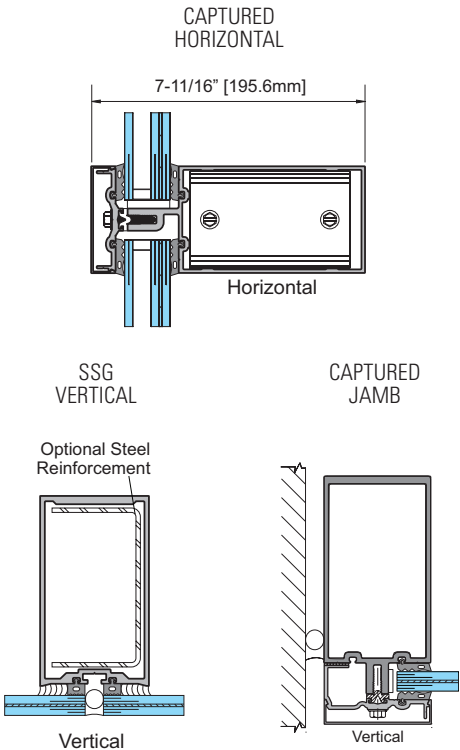
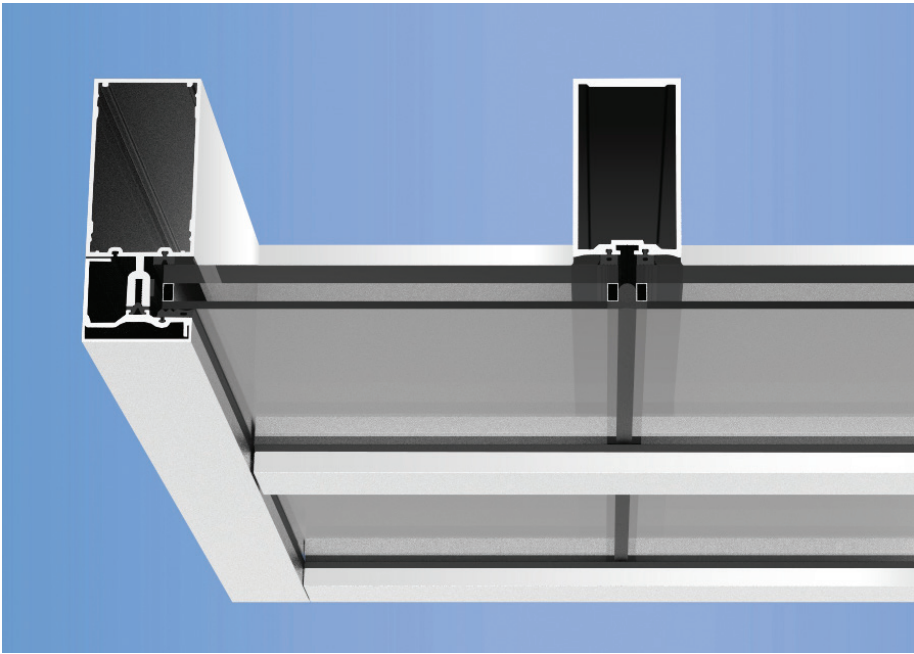
Note: We do not have an official thermal test report for the SSG system. Testing data is from YHC 300 OG system, but the SSG configuration should have similar results.

Finish Options	
Type	Standard
Factory Anodized	AAMA 612
Organic Paints	AAMA 2605

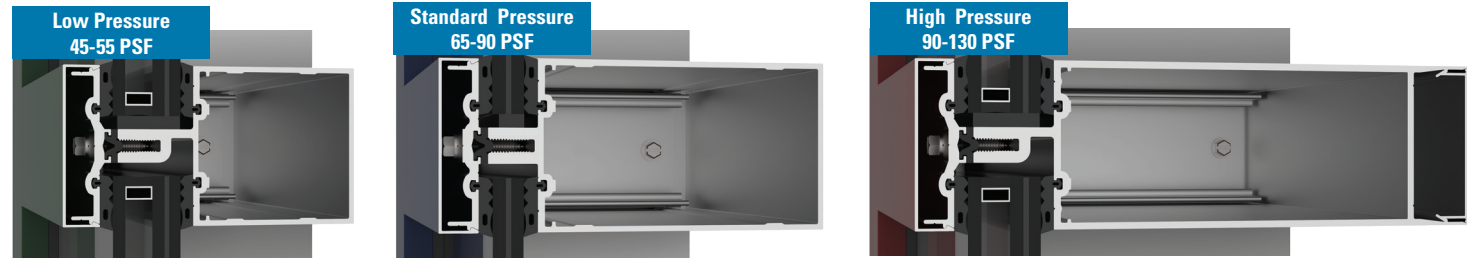
Product Approvals	
Missile Level A & D	Wind Zone 3
Hurricane HVHZ	International ICC
Florida FBC	Blast UFC 4-010-01

Mullion Depth Options	
Insulated	Monolithic
Low (45-55 PSF)	
5-21/32"	4-7/8"
Med (60-90 PSF)	
7-11/16"	6-15/16"
High (90-130 PSF)	
10-1/2"	9-3/4"

Typical Configuration



Mullion Depths and Pressures



Additional information including CAD details, CSI specs, test reports and installation instructions are found on the Product Guide by clicking this link or visiting www.ykkap.com/commercial/productguide