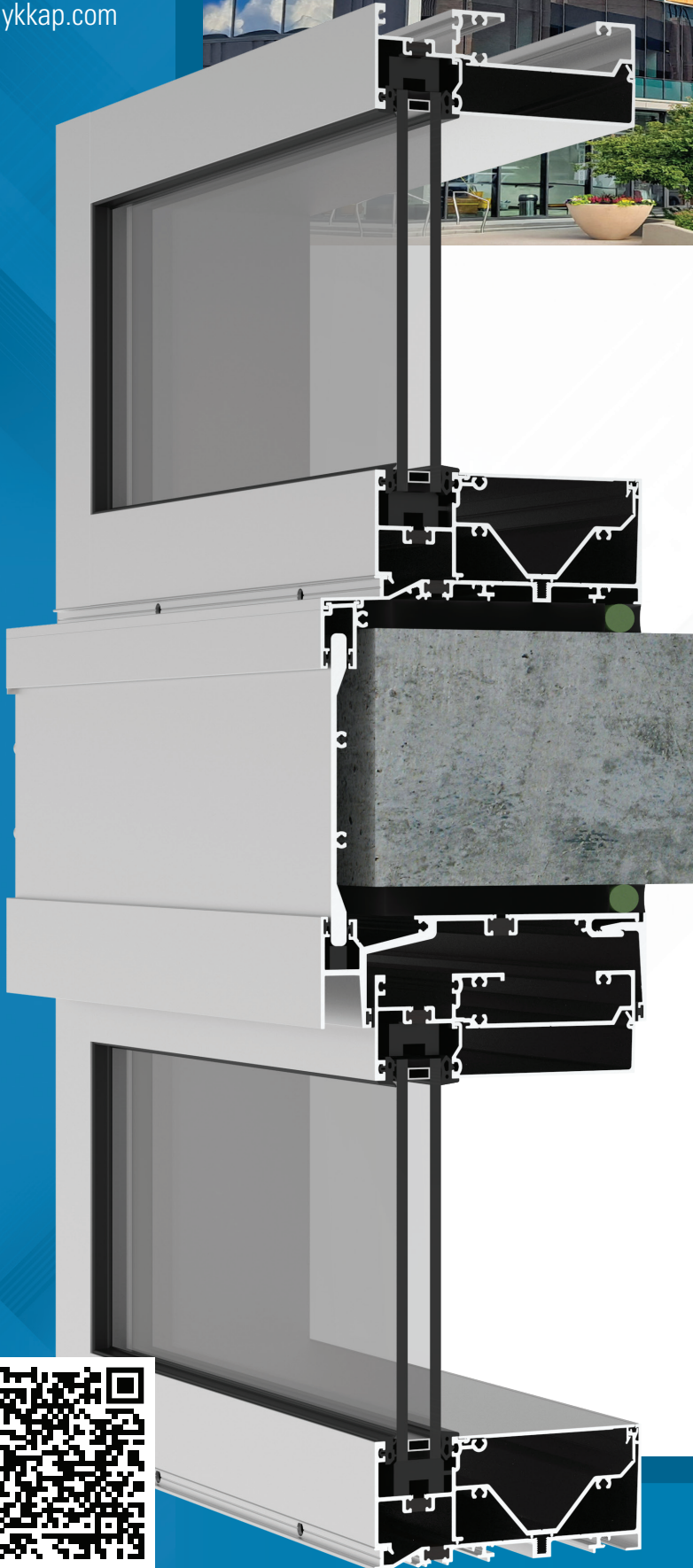


YKK AP[®]

www.ykkap.com



YWW 60 TU

Thermally Broken Window Wall
with Optional Slab Edge Cover

The **YWW 60 TU** is a 6-inch deep window wall glazing system designed for use in various multi-story applications. It includes an innovative slab edge cover that yields the beauty and appearance of a curtain wall application. The glass plane is set to the front to maximize energy efficiency. The thermal performance is further enhanced by YKK AP's ThermoBond Plus[®] thermal break technology.

- Inside, Outside and SSG Glazing Options
- SSG: 2-Sided Field & 4-Sided Shop/Unitized
- 1" Glazing Standard with 1/4" Infill Option
- Thermally Broken by ThermoBond Plus[®] Pour and De-Bridged Urethane Barriers
- Punched Opening or Slab Edge Floor-to-Floor
- Tubular Mullions & Head Receptor Options
- Integrates with our YKK AP Entrances

Configuration:

Glazing	Glass Setting	Installation
Outside, Inside and SSG	Front Set	Screw Spline

Thermal Values:

U-Factor:	Values as low as 0.33*
CRF:	Minimum 65 frame and 63 glass

*Based on NFRC 100. Lower values may be achieved through further simulation.



YWW 60 TU SPECS		
Base Depth	6" (without Slab Edge Cover)	
Sightline	2-1/4"	
Config	Outside, Inside or SSG Glazed / Front Set	
Tested Glass	1" IGU with Low-E (C.O.G. U-Factor: 0.29)	
Test	Results	Standards
Air Infiltration	0.06 CFM/FT ² (1.10 m ³ /h·m ²) @ 6.24 PSF (299 Pa)	ASTM E 283
Water Infiltration	Static: 12 PSF (575 Pa) Dynamic: 12 PSF (575 Pa)	ASTM E 331 AAMA 501

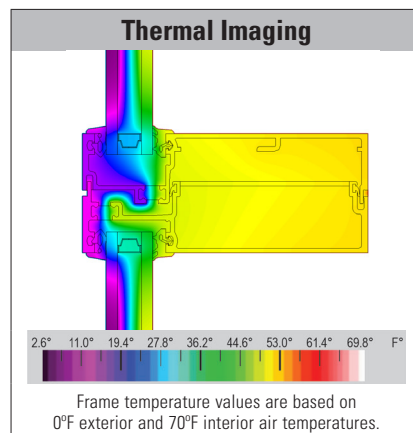
Thermal Performance								
Mullion Depth (1" IGU)	U-Factor - BTU/hr·ft ² ·°F						CRF*	
2-1/4" x 6"	0.41	0.39	0.38	0.36	0.34	0.33	65	63
Center of Glass	0.30	0.28	0.26	0.24	0.22	0.20	Frame	Glass
AAMA 507 & NFRC 100							AAMA 1503	

*CRF numbers are from YWW 50 TU Testing

Finish Options	
Type	Standard
Factory Anodized	AAMA 612
Organic Paints	AAMA 2604 AAMA 2605

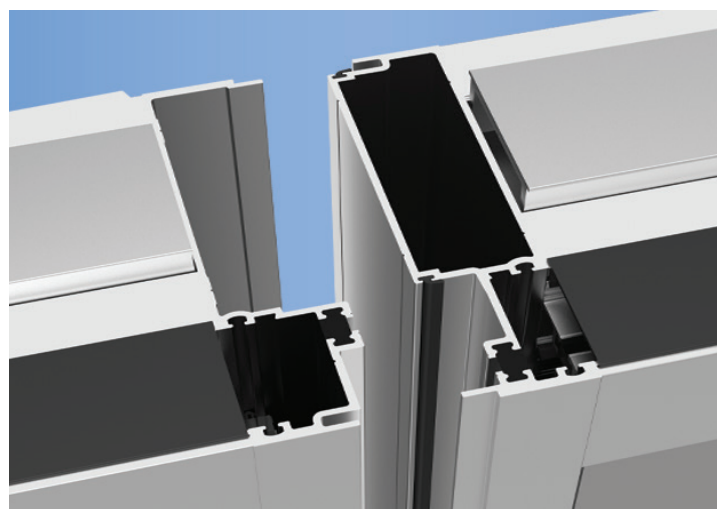
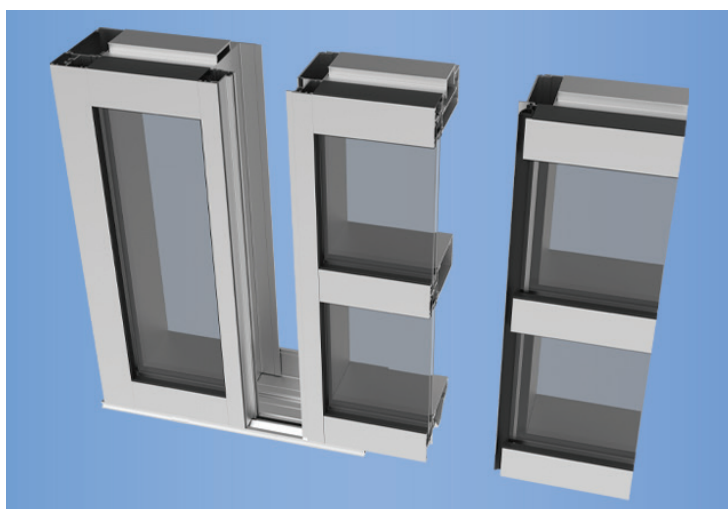
Various System Options

Expansion Mullion, Slab Edge and Covers, Head Receptors, 90° and 135° Outside and Inside Mullions, Door Jamb and Transoms



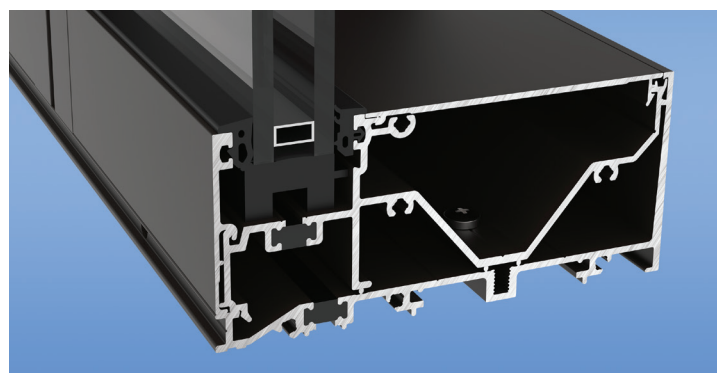
Unitized Framework

The YWW 60 TU has a Pre-Glazed/Unitized option. By splitting the vertical mullions into male-female pieces, units can be pre-assembled off the job site and fitted together in sections on the job site. This makes installation quicker, and less materials taking up space out in the field.



Thermally Broken

ThermaBond Plus[®] process is a pour and debridged process that greatly improves the adhesion of the polyurethane material to the aluminum extrusion. Combining science and technology, ThermaBond Plus[®] process resolves the problem of adhesion and the resulting dry shrinkage associated with typical poured and debridged systems.



Additional information including CAD details, CSI specs, test reports and installation instructions are found on the Product Guide by clicking this link or visiting www.ykkap.com/commercial/productguide