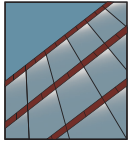


# YWW 50 TU

Thermally Broken Window Wall System with Optional Slab Edge Cover



## WINDOW WALL SYSTEM

### Product Description

The YWW 50 TU is a 5-inch deep window wall glazing system designed for use in multi-story applications. It includes an innovative slab edge cover that yields the beauty and appearance of a curtain wall application. The glass plane is set to the front to maximize thermal performance. The system has mullion options that allow glazing from the interior or the exterior. 2 and 4-sided Structural Silicone Glazing is also an option. Thermal performance is enhanced by YKK AP's patented ThermaBond Plus® thermal break technology. The screw spline assembly design makes fabrication and installation more efficient.

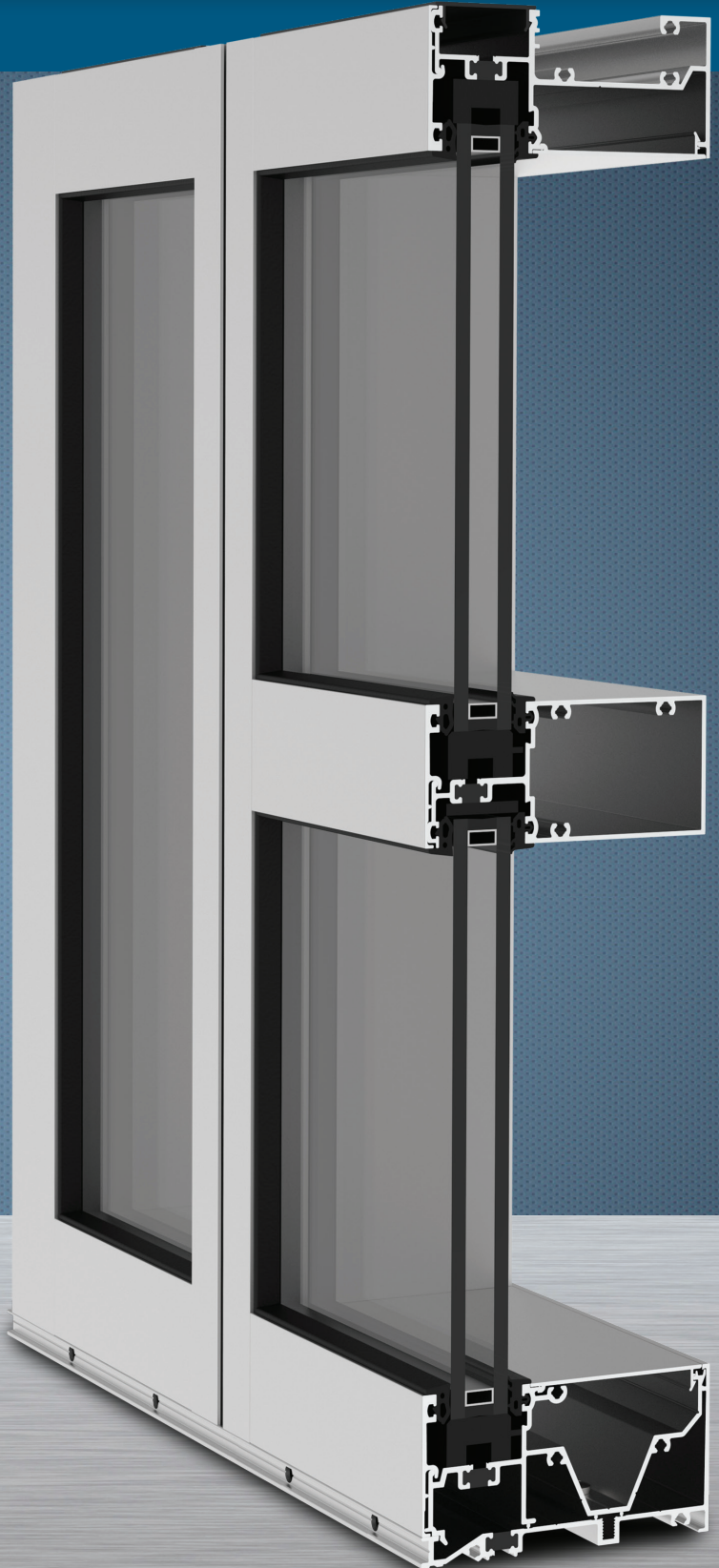
### Product Options & Features

- Inside, Outside and SSG Glazing Options
- SSG: 2-Sided Field and 4-Sided Shop/Unitized
- Slab Edge with Cover Available
- 1" Infill with 1/4" Infill Adapters
- Compatible with Entrance Systems
- Screw Spline Fabrication and Assembly
- Thermally broken via ThermaBond Plus®  
Pour & De-Bridged Urethane Barriers



**YKK  
ap**

Quality  
inspires®



# YWW 50 TU

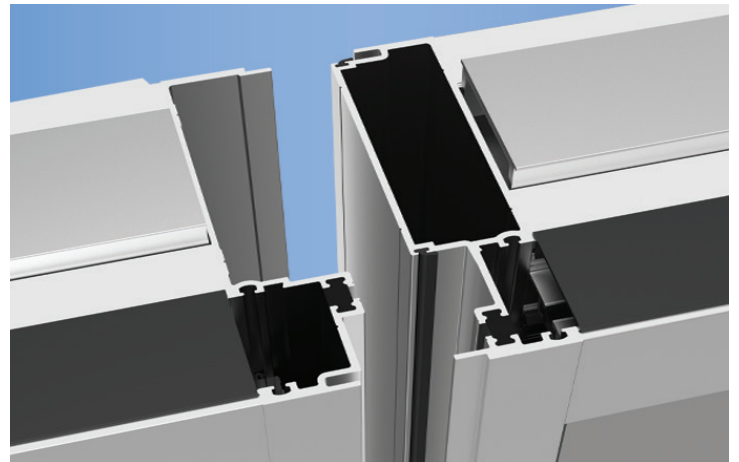
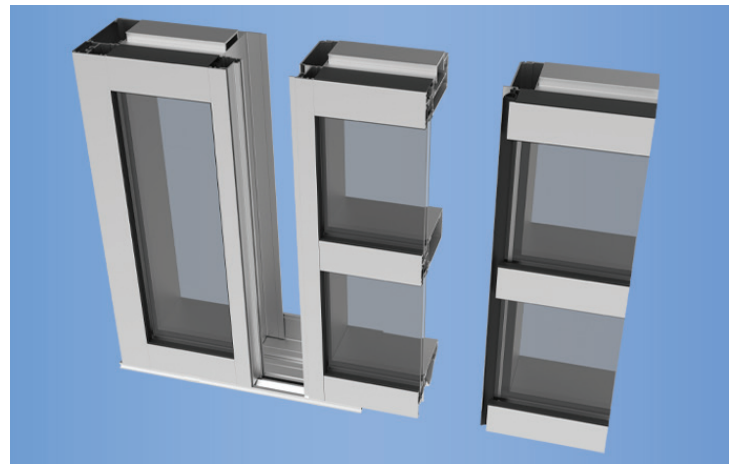
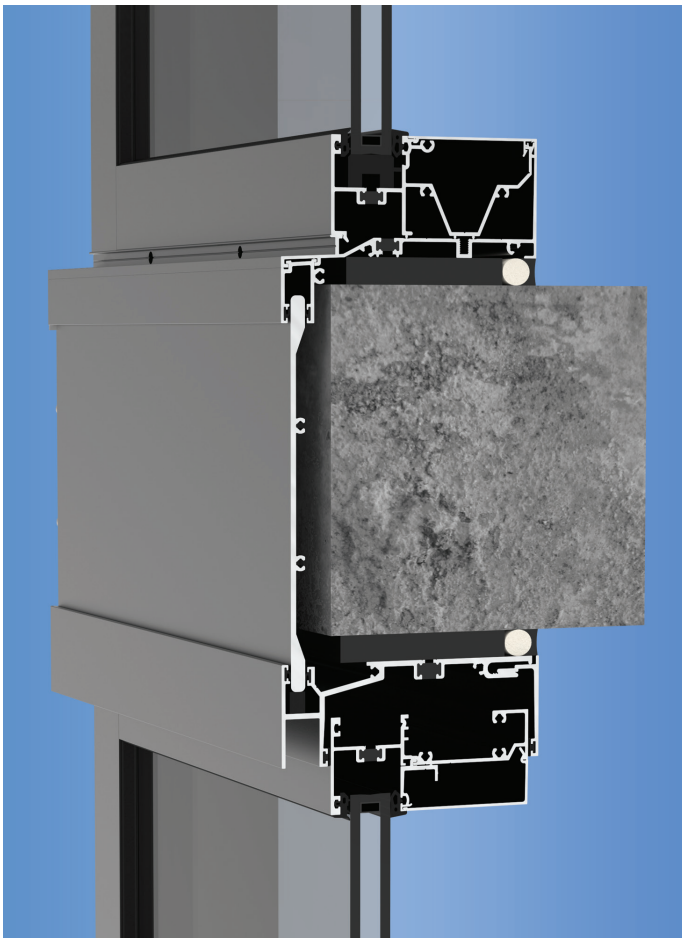
## SYSTEM SPECIFICATIONS

System Sightline	Base Depth	Glazing & Config	Glass	Air Infiltration	Water Infiltration	Thermal Performance	Acoustical Performance
2-1/4"	5" (Without Slab Edge Cover)	Outside, Inside or SSG & Front Set	1" IGU with Low-E (C.O.G. U-factor: 0.29)	0.06 CFM/FT <sup>2</sup> (1.10 m <sup>3</sup> /h-m <sup>2</sup> ) @ 6.24 PSF (299 Pa)	<b>Static:</b> 12 PSF (575 Pa) <b>Dynamic:</b> 12 PSF (575 Pa)	<b>U-factor:</b> 0.41 BTU/HR•FT <sup>2</sup> •°F* <b>CRF:</b> Minimum of 65 on frame**	<b>Std STC:</b> 32 <b>Std OITC:</b> 26  <b>Lam STC:</b> 35 <b>Lam OITC:</b> 29
<b>Testing Standards</b>				ASTM E 283	ASTM E 331 & AAMA 501	* NFRC 100/200/500 & **AAMA 1503	ASTM E 90 & 1425
<b>Installation Options</b>				<b>IG, OG, SSG: 2-Sided Field or 4-Sided Unitized/Shop Slab Edge or Head Receptors</b>			
<b>Available Finishes</b>				Factory Anodized (AAMA 612) and Organic Paints (AAMA 2604 & AAMA 2605)			

## WINDOW WALL FEATURES

Slab Edge

Unitized Framework



## THERMALLY BROKEN

ThermaBond Plus® process is a pour and debridged process that greatly improves the adhesion of the polyurethane material to the aluminum extrusion. Combining science and technology, ThermaBond Plus® process resolves the problem of adhesion and the resulting dry shrinkage associated with typical poured and debridged systems.

Additional information including CAD details, CSI specifications, Test Reports and Installation instructions are available online at:

[www.ykkap.com/commercial/product/window-walls/yww-50-tu/](http://www.ykkap.com/commercial/product/window-walls/yww-50-tu/)