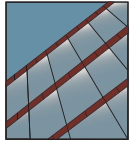


# YWE 40 T

Thermally Improved, Front Loading Window Wall System



## WINDOW WALL SYSTEM

### Product Description

The YWE 40 T is a thermally improved, front loaded window wall system designed to meet the design challenges of today's buildings. The system is glazed from the interior to reduce labor costs. Our snap-on face covers enable separate interior and exterior finishes for aesthetic and/or economic reasons. Optional head and sill anchors help installations in punched openings. Two sided structural silicone glazing at vertical mullions is also available as an option.

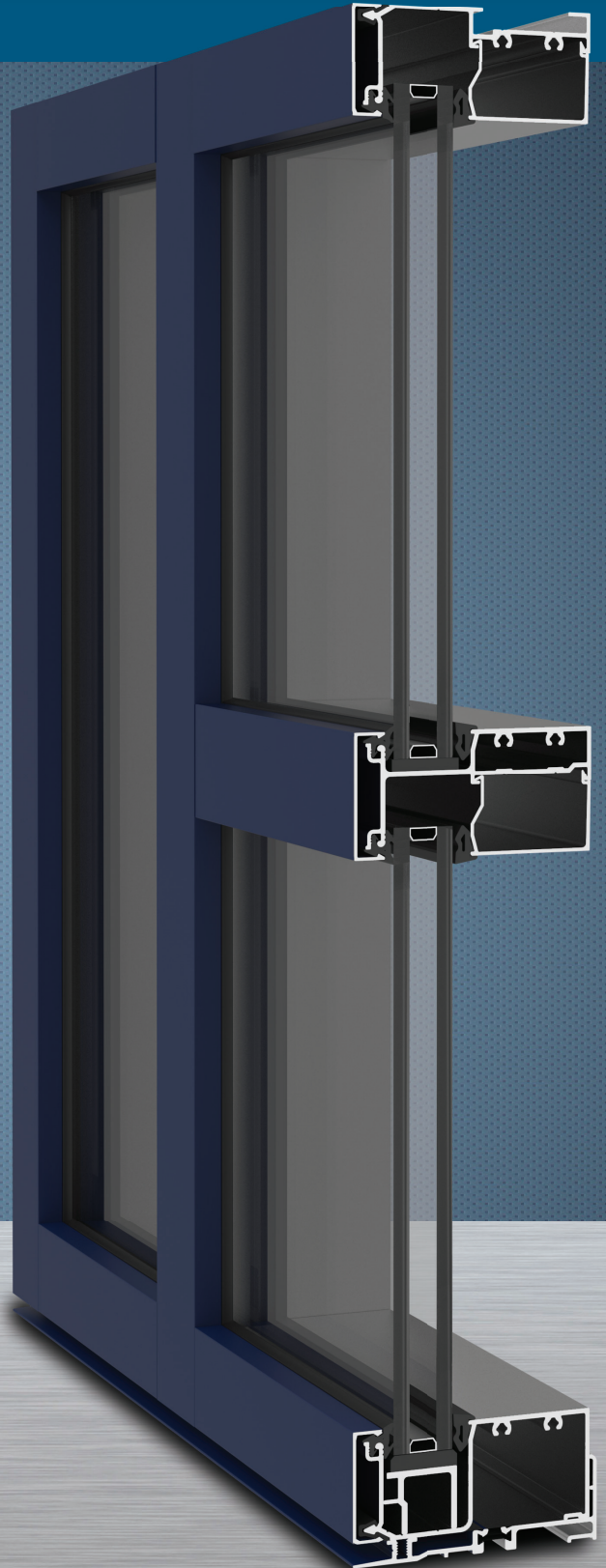
### Product Options & Features

- 2" Face by 4" Overall Depth (1-3/4" Face Members)
- Inside Glazed to Reduce Field Labor
- Screw Spline or Shear Clip Construction
- Optional Structural Silicone Glazed Intermediate Verticals
- Separate Interior/Exterior Finish Options
- Thermal Clips help reduce heat transfer



**YKK**  
**ap**

Quality  
inspires®

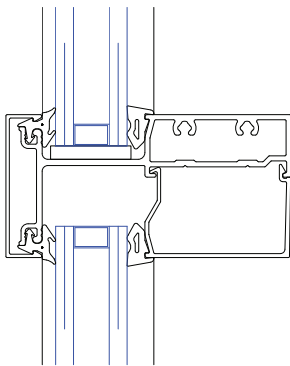


# YWE 40 T

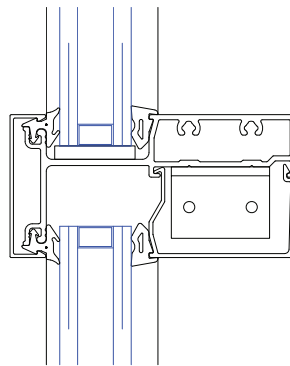
## SYSTEM SPECIFICATIONS

System Sightline	Base Depth	Glazing & Config	Glass	Air Infiltration	Water Infiltration	Thermal Performance
2"	4"	Inside & Front Set	1" IGU with Low-E (C.O.G. U-factor: 0.29)	0.06 CFM/FT <sup>2</sup> (1.10 m <sup>3</sup> /h·m <sup>2</sup> ) @ 6.24 PSF (299 Pa)	<b>Static:</b> 10 PSF (479 Pa) <b>Dynamic:</b> 10 PSF (479 Pa)	<b>U-factor:</b> 0.45 BTU/HR•FT <sup>2</sup> •°F* <b>CRF:</b> Minimum of 57 on frame**
<b>Testing Standards</b>				ASTM E 283	ASTM E 331 & AAMA 501	* NFRC 102 & ** AAMA 1503
<b>Installation Options</b>				Continuous Head and Sill, Vertical Through or Screw Spline with Monolithic or Insulating Glass		
<b>Available Finishes</b>				Factory Anodized (AAMA 612) and Organic Paints (AAMA 2604 & AAMA 2605)		

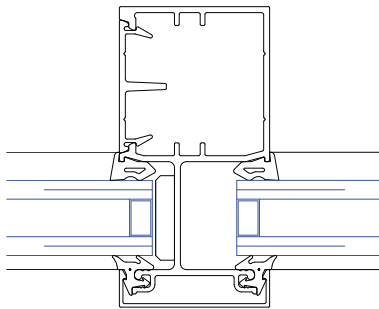
## VERTICAL/HORIZONTAL DETAILS



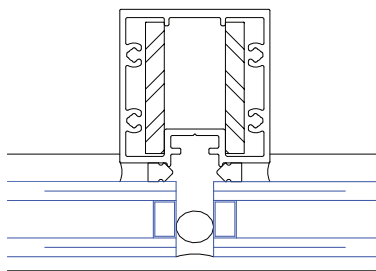
Horizontal Detail



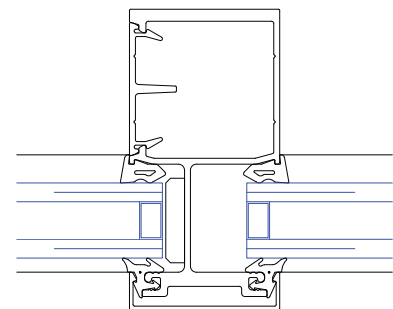
Horizontal Detail for Continuous Head & Sill



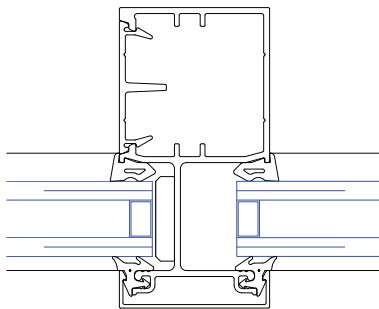
Vertical Detail



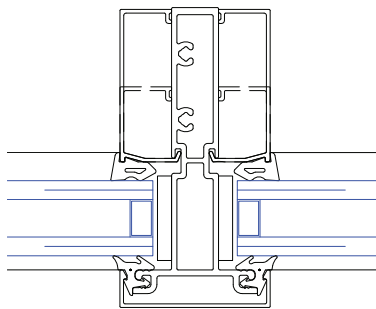
SSG Vertical Detail



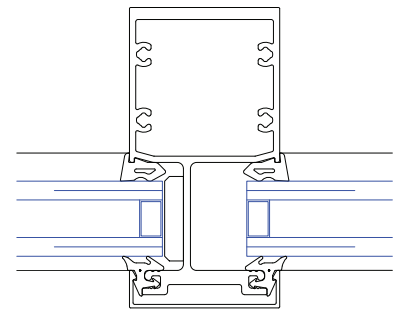
Heavy Duty Vertical Detail



Vertical Detail for Continuous Head & Sill



Optional Vertical Detail for Continuous Head & Sill



Heavy Duty Vertical Detail for Continuous Head & Sill

Additional information including CAD details, CSI specifications, Test Reports and Installation instructions are available online at:

[www.ykkap.com/commercial/product/window-walls/ywe-40-t/](http://www.ykkap.com/commercial/product/window-walls/ywe-40-t/)