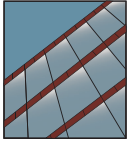


YWW 45 TU

High Performance, Thermally Broken Window Wall System



WINDOW WALL SYSTEM

Product Description

The YWW 45 TU is designed specifically to meet the performance requirements of window walls for multi-story buildings. Glass is set to the front of the system to maximize thermal performance and may be glazed from either the interior of the building for labor savings or from the exterior at column line applications. The system is thermally broken by YKK AP's patented ThermaBond Plus® poured and de-bridged technology. It may be installed with head and sill members running continuously or with the head and sill members cut in between the vertical members. Sill flashing is only required when the head and sill members are cut in between the verticals.

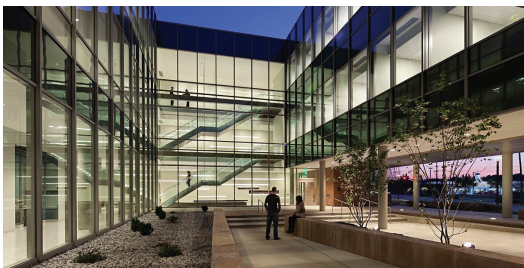
Product Options & Features

- Perimeter Members: 2" x 4-1/2"
- Intermediate Members: 2-1/4" x 4-1/2"
- Screw Spline or Shear Block Construction
- Optional SSG Intermediate Vertical
- Strap & Roll-Over Anchors are available for Precast Conditions

U-Factor Values as low as 0.33*

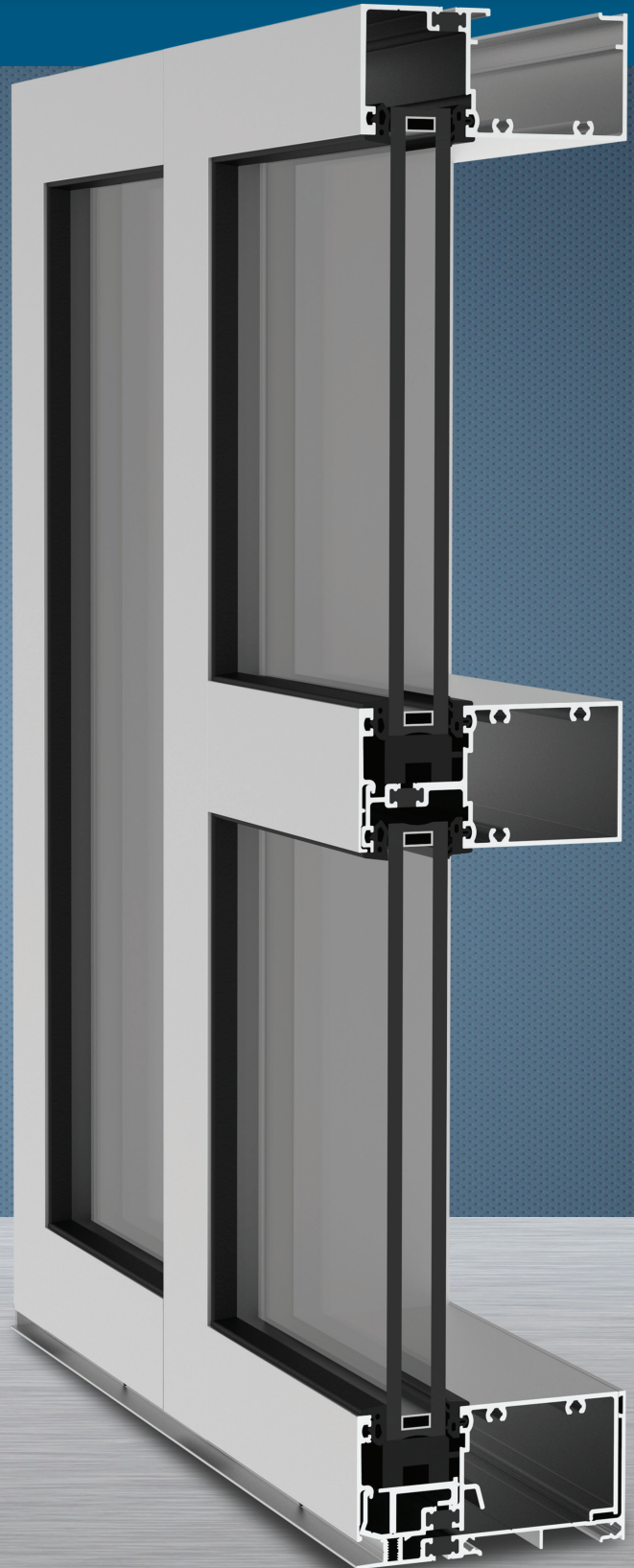
CRF Minimum 69_{frame} & 63_{glass}

*Based on AAMA 507. Lower values may be achieved through further simulation.



**YKK
ap**

Quality
inspires®



YWW 45 TU

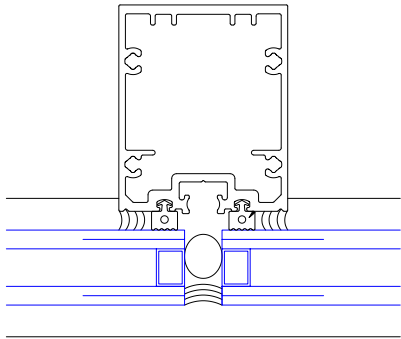
SYSTEM SPECIFICATIONS

System Sightline	Base Depth	Glazing & Config	Glass	Air Infiltration	Water Infiltration	Acoustical Performance
2" Perimeter 2-1/4" Intermediate	4-1/2"	Outside or Inside & Front Set	1" IGU with Low-E (C.O.G. U-factor: 0.29)	0.06 CFM/FT ² (1.10 m ³ /h-m ²) @ 6.24 PSF (299 Pa)	Static: 12 PSF (575 Pa) Dynamic: 12 PSF (575 Pa)	Lam STC: 35 Lam OITC: 29
Testing Standards				ASTM E 283	ASTM E 331 & AAMA 501	ASTM E 90 & 1425
Installation Options				Continuous Head & Sill, Vertical Through, Shear Block or Screw Spline with Monolithic or Insulating Glass		
Available Finishes				Factory Anodized (AAMA 612) and Organic Paints (AAMA 2604 & AAMA 2605)		

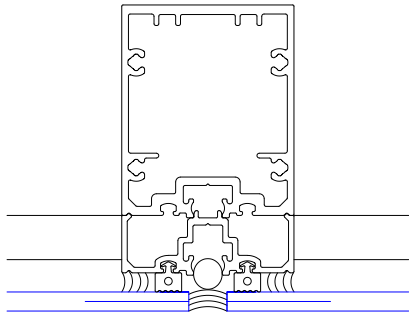
Thermal Performance						
1" IGU	BTU/hr-ft ² -°F					
C.O.G U-Factor	0.30	0.28	0.26	0.24	0.22	0.20
2" x 4-1/2"	0.41	0.40	0.38	0.36	0.35	0.33
Testing Standards	AAMA 507					

CRF	
Frame	Glass
69	63
AAMA 1503	

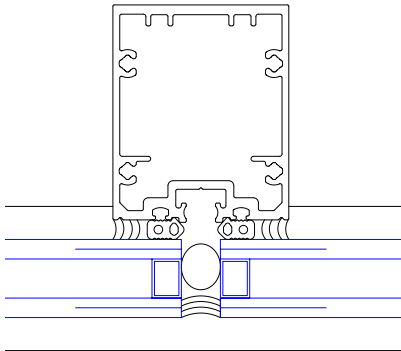
SSG OPTION



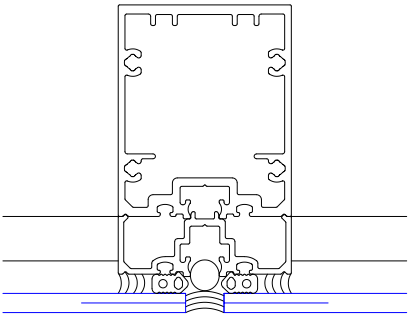
Outside Glazed SSG with 1" Glass



Outside Glazed SSG with 1/4" Adapter



Inside Glazed SSG with 1" Glass



Inside Glazed SSG with 1/4" Adapter

THERMALLY BROKEN

ThermaBond Plus® process is a pour and debridged process that greatly improves the adhesion of the polyurethane material to the aluminum extrusion. Combining science and technology, ThermaBond Plus® process resolves the problem of adhesion and the resulting dry shrinkage associated with typical poured and debridged systems.

Additional information including CAD details, CSI specifications, Test Reports and Installation instructions are available online at:

www.ykkap.com/commercial/product/window-walls/yww-45-tu/