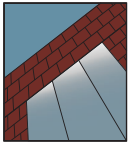


# YES 45 CS/CI

Center Set, Can Storefront Systems with Monolithic or Insulating Glass



## STOREFRONT SYSTEM

### Product Description

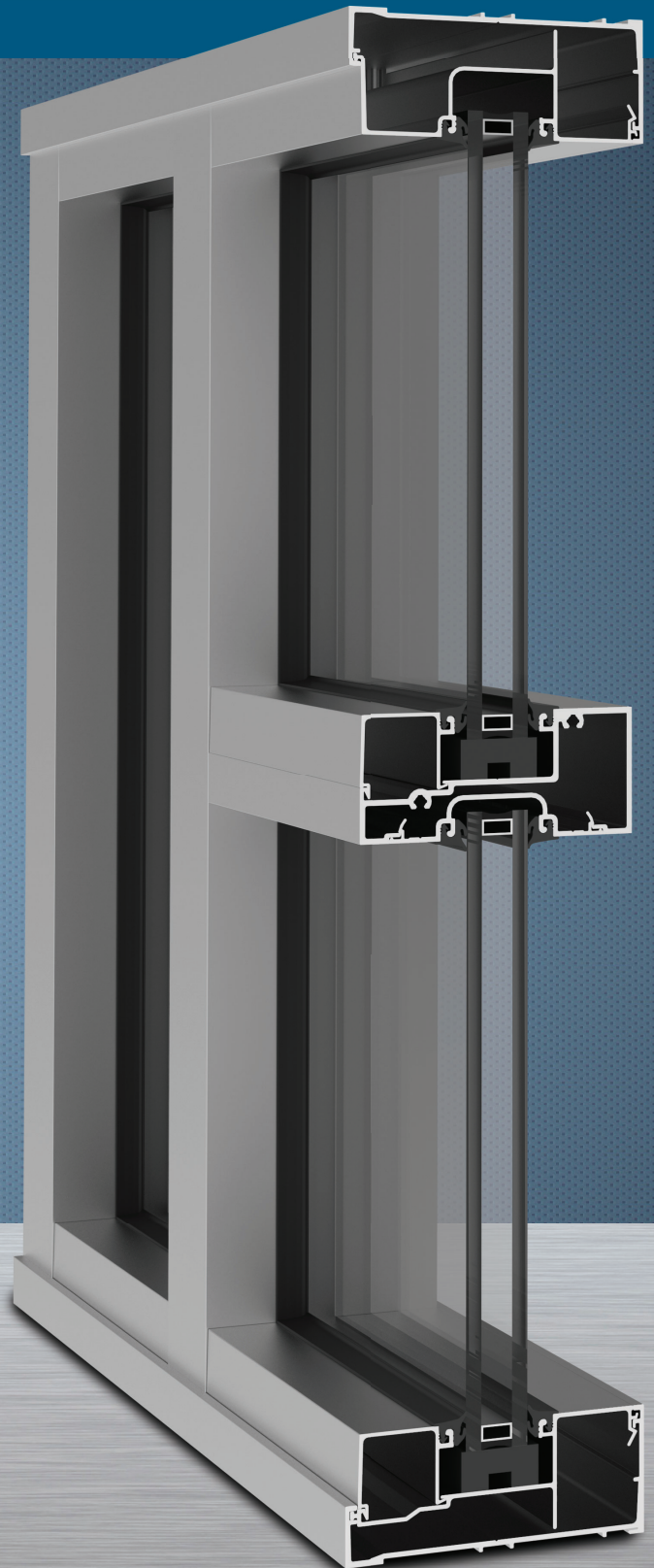
The YES 45 C is a center glazed can system with Monolithic (CS) or Insulating Glass (CI) (shown to the right) designed to provide the appearance of standard storefront while providing the benefits of a ribbon window system. Head and sill members are installed in a continuous fashion to provide uninterrupted protection against water infiltration. Vertical members are simply stacked into the head and sill, eliminating the requirement of fasteners and thereby reducing fabrication and installation labor. The YES 45 C can also be glazed from either the outside or interior of the building. Heavy duty versions of both systems are available to meet higher structural performance.

### Product Options & Features

- Outside or Inside Glazed
- Screw Spline or Shear Block Assembly
- Gasket With Stretch-Resistant Cord
- Integrates with Model 20D/35D/50D Doors
- Enhanced Water Infiltration Resistance



Quality  
inspires®

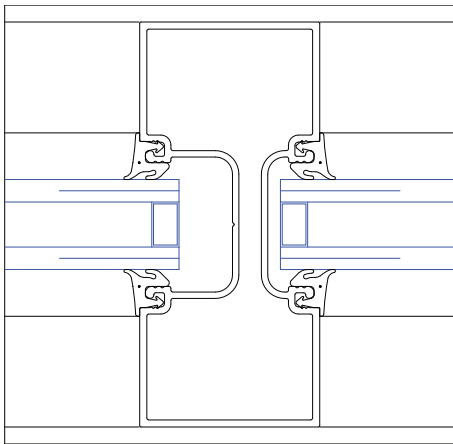


# YES 45 CS/CI

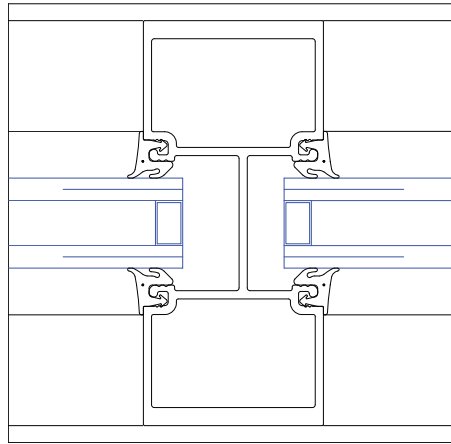
## SYSTEM SPECIFICATIONS

| System Sightline            | Base Depth | Glazing & Config               | Glass                                     | Air Infiltration  | Water Infiltration             | Thermal Performance   | Acoustical Performance   |
|-----------------------------|------------|--------------------------------|---|---|--------------------------------|---|--|
| 1-3/4" (CS) and 2" (CI)     | 4-1/2"     | Inside or Outside & Center Set | 1" IGU with Low-E (C.O.G. U-factor: 0.29) | 0.06 CFM/FT <sup>2</sup> (1.10 m <sup>3</sup> /h·m <sup>2</sup> ) @ 6.24 PSF (299 Pa) | <b>Static:</b> 10 PSF (479 Pa) | <b>U-factor:</b> 0.49 BTU/HR•FT <sup>2</sup> •°F*<br><b>CRF:</b> Minimum of 44 on frame** | <b>Std STC:</b> 32<br><b>Std OITC:</b> 27<br><br><b>Lam STC:</b> 37<br><b>Lam OITC:</b> 30 |
| <b>Testing Standards</b>    |            |                                |   | ASTM E 283  | ASTM E 331 & AAMA 501          | * NFRC 100 & ** AAMA 1503   | ASTM E 90 & 1425   |
| <b>Installation Options</b> |            |                                |   | Shear Block or Screw Spline with Monolithic or Insulating Glass                       |                                |   |  |
| <b>Available Finishes</b>   |            |                                |   | Factory Anodized (AAMA 612) and Organic Paints (AAMA 2604 & AAMA 2605)                |                                |   |  |

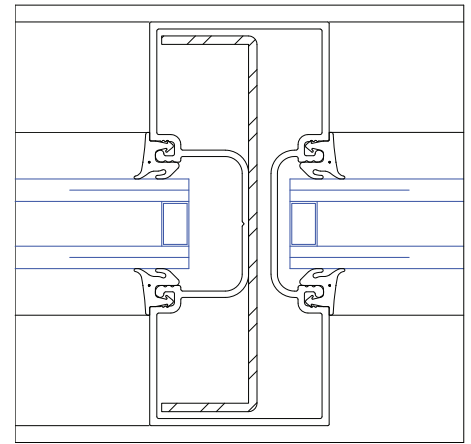
## CAN MULLION SETUPS



Standard



Heavy Duty



Steel Reinforcement



Landmark Hospital Center - Naples, FL

Additional information including CAD details, CSI specifications, Test Reports and Installation instructions are available online at:  
[www.ykkap.com/commercial/product/storefronts/yes-45-cs/](http://www.ykkap.com/commercial/product/storefronts/yes-45-cs/)    [www.ykkap.com/commercial/product/storefronts/yes-45-ci/](http://www.ykkap.com/commercial/product/storefronts/yes-45-ci/)