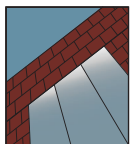


# YES 60 FI

Offset Storefront System for Maximum Structural Strength



## STOREFRONT SYSTEM

### Product Description

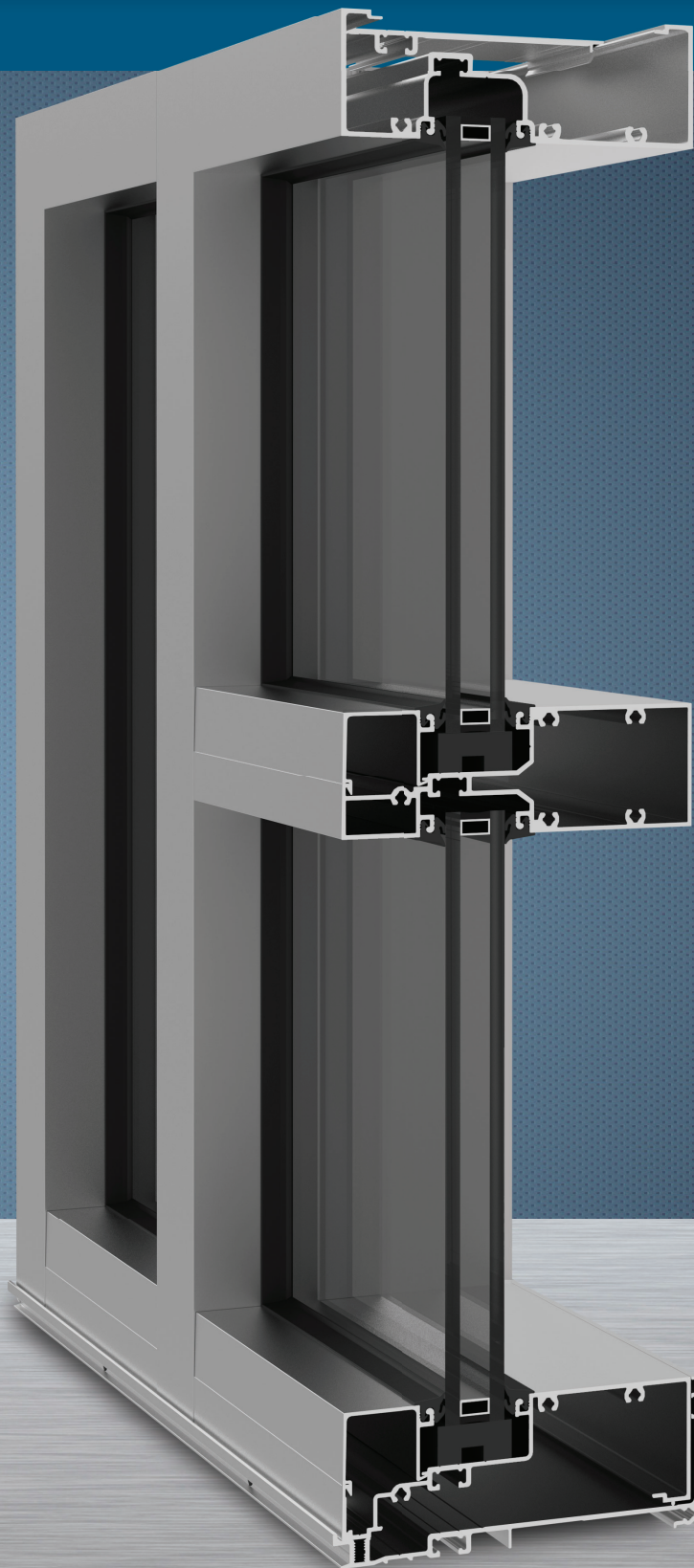
This 6" offset storefront system can deliver the performance necessary for climate zones 1 and 2 with a 1" low E IGU. The YES 60 FI is 10% stronger structurally than the TU and XT systems allowing for greater spans both vertically and horizontally. Our FI can even glaze a 1/4" monolithic glass with a pocket reducer. This system is truly one of the most flexible storefront design choices on the market today.

### Product Options & Features

- 2" sightline x 6" depth
- Outside glazed
- Screw spline assembly
- Integrates with Model 20D/35D/50D Single and Paired Doors
- High performance sill flashing
- Integrates with YES 45 Series storefronts
- Compatible with ThermaShade® and Luminance® Sun Control systems
- Accepts 1/4" up to 1" Insulating Glass



Quality  
inspires®



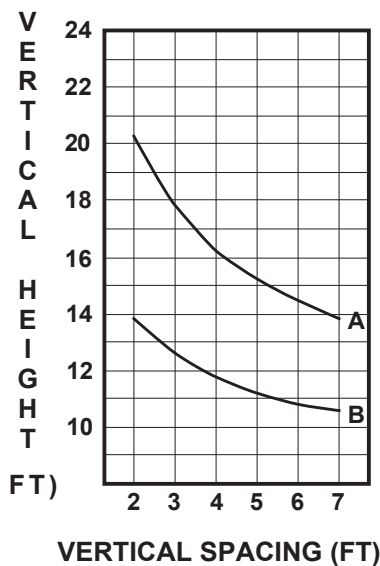
## SYSTEM SPECIFICATIONS

System Sightline	Base Depth	Glazing & Config	Glass	Air Infiltration	Water Infiltration	Thermal Performance	Acoustical Performance
2"	6"	Outside & Offset	1" IGU with Low-E (C.O.G. U-factor: 0.29)	0.06 CFM/FT <sup>2</sup> (1.10 m <sup>3</sup> /h·m <sup>2</sup> ) @ 6.24 PSF (299 Pa)	<b>Static:</b> 12 PSF (574 Pa) <b>Dynamic:</b> 12 PSF (574 Pa)	<b>U-factor:</b> 0.54 BTU/HR•FT <sup>2</sup> •°F* <b>CRF:</b> Minimum of 42 on frame**	<b>Std STC:</b> 31 <b>Std OITC:</b> 25 <b>Lam STC:</b> 34 <b>Lam OITC:</b> 29
<b>Testing Standards</b>				ASTM E 283	ASTM E 331 & AAMA 501	* NFRC 100 & ** AAMA 1503	ASTM E 90 & 1425
<b>Installation Options</b>				Screw Spline with Insulating Glass			
<b>Available Finishes</b>				Factory Anodized (AAMA 612) and Organic Paints (AAMA 2604 & AAMA 2605)			

## STRUCTURAL INTEGRITY

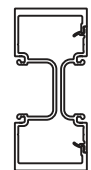
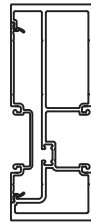
Longer horizontal mullions resulting in greater spans for projects.  
Chart based on 20 PSF windload.

### WIND LOAD PERFORMANCE COMPARISON YES 60 FI vs. YES 45 FI



**A: YES 60 FI**  
E9-2943 w/ E9-2907  
I<sub>xx</sub>=12.189 in<sup>4</sup> (507.34 cm<sup>4</sup>)

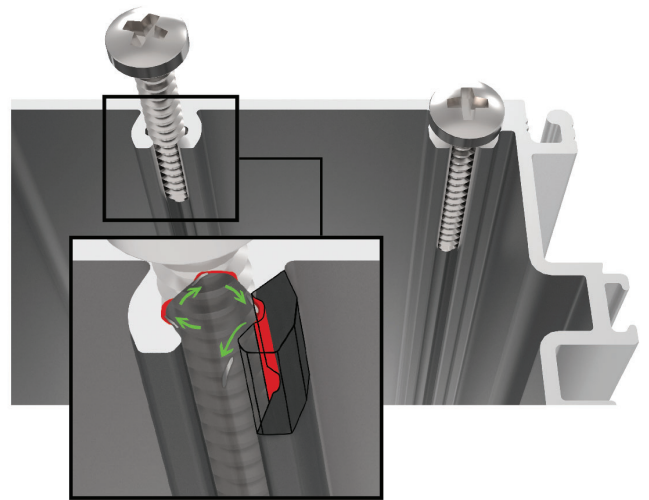
**B: YES 45 FI**  
E9-1041 w/ E9-1012  
I<sub>xx</sub>=5.183 in<sup>4</sup> (215.73 cm<sup>4</sup>)



## FASTER INSTALLATION

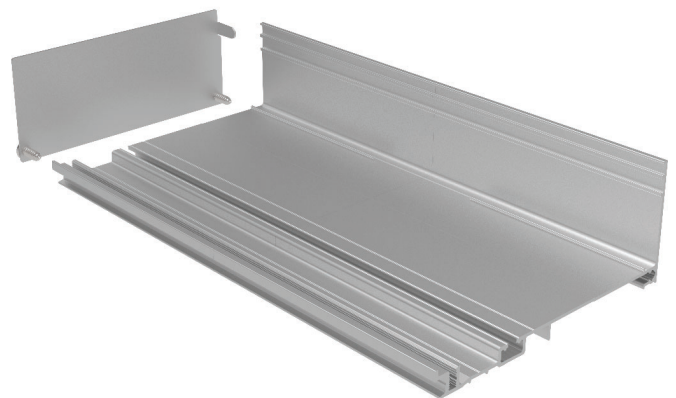
### Diamond Shaped Screw Splines

- Reducing structural stress at fastener head connection helps prevent any screw breaks
- Eliminates the need for wax dipping
- Chip relief allows for quicker screw driving, resulting in reduced fabrication time



## INDUSTRY LEADING SILL FLASHING

- No Blind Seals - no secondary penetration of sill and flashing
- Taller back leg - enhanced water resistance (10 PSF) in the field, and in field water testing
- Patented 3 point attachment of end dam for reduced transit damage. Remains intact and sealed throughout life of the building
- No sill anchoring required if end reaction less than 500 lbs.



Additional information including CAD details, CSI specifications, Test Reports and Installation instructions are available online at:  
[www.ykkap.com/commercial/product/storefronts/yes-60-fi/](http://www.ykkap.com/commercial/product/storefronts/yes-60-fi/)