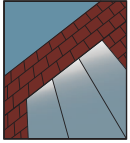


# YES 45 FT

## Thermally Broken, Center Set Storefront System



### STOREFRONT SYSTEM

#### Product Description

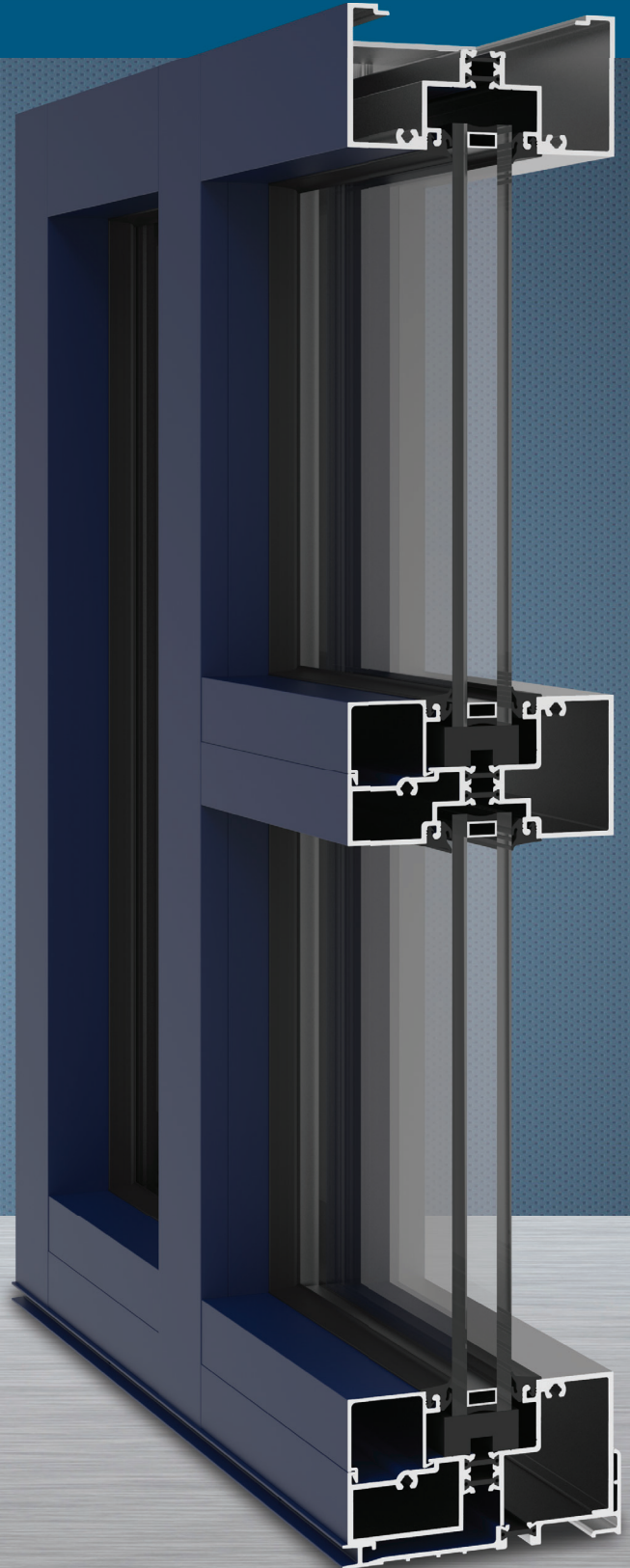
The YES 45 FT is a thermally broken, center set, flush glazed storefront system for monolithic and insulating glass. The system is thermally broken by YKK AP MegaTherm® technology, which provides a continuous thermal barrier while conserving energy and reducing condensation. MegaTherm® technology incorporates 6/6 nylon polyamide glass-fiber reinforced pressure extruded bars that will not crack, shrink, or degrade.

#### Product Options & Features

- 2-1/4" Face by 4-1/2" Overall Depth
- Outside Glazed / Inside Glazed Option
- Glazing of 1/4" up to 1" Infills
- Screw Spline or Shear Block Assembly
- Seamless Entrance Door Integration
- Optional 4" Vertical and Horizontal Profiles
- Gasket With Stretch-Resistant Cord
- YKK AP MegaTherm® Thermal Break
- Separate Interior/Exterior Finish Options



Quality  
inspires®



# YES 45 FT

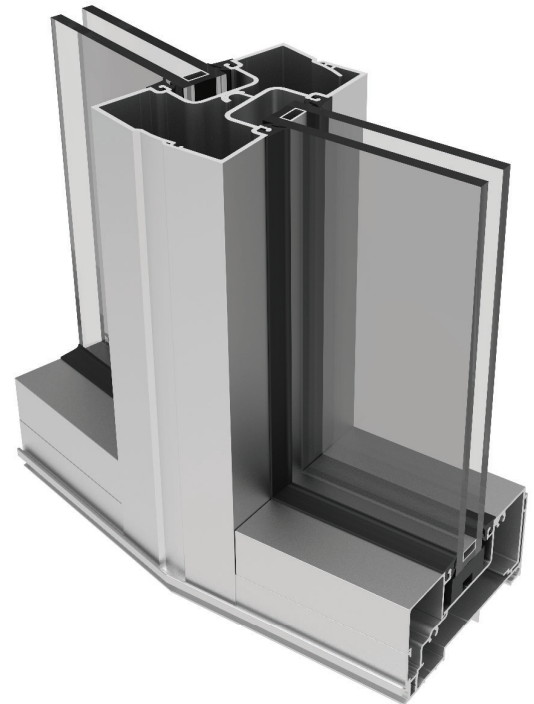
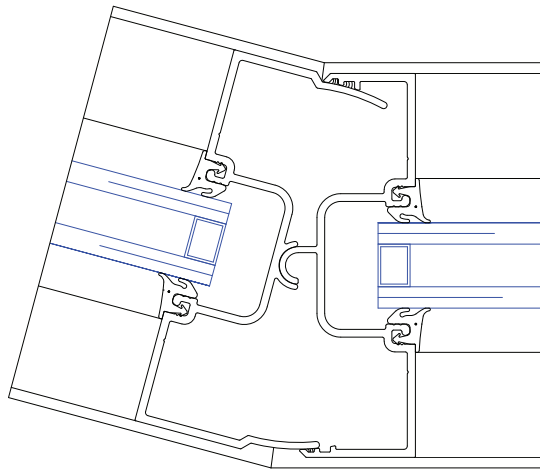
## SYSTEM SPECIFICATIONS

| System Sightline            | Base Depth | Glazing & Config               | Glass                                     | Air Infiltration  | Water Infiltration             | Thermal Performance   |
|-----------------------------|------------|--------------------------------|---|---|--------------------------------|---|
| 2-1/4"                      | 4-1/2"     | Inside or Outside & Center Set | 1" IGU with Low-E (C.O.G. U-factor: 0.29) | 0.06 CFM/FT <sup>2</sup> (1.10 m <sup>3</sup> /h·m <sup>2</sup> ) @ 6.24 PSF (299 Pa) | <b>Static:</b> 15 PSF (718 Pa) | <b>U-factor:</b> 0.46 BTU/HR•FT <sup>2</sup> •°F*<br><b>CRF:</b> Minimum of 60 on frame** |
| <b>Testing Standards</b>    |            |                                |   | ASTM E 283  | ASTM E 331 & AAMA 501          | * NFRC 100 & ** AAMA 1503   |
| <b>Installation Options</b> |            |                                |   | Screw Spline or Shear Block with Monolithic or Insulating Glass                       |                                |   |
| <b>Available Finishes</b>   |            |                                |   | Factory Anodized (AAMA 612) and Organic Paints (AAMA 2604 & AAMA 2605)                |                                |   |

## HINGED MULLIONS

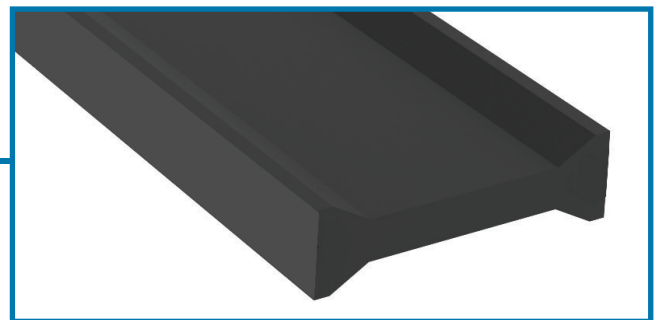
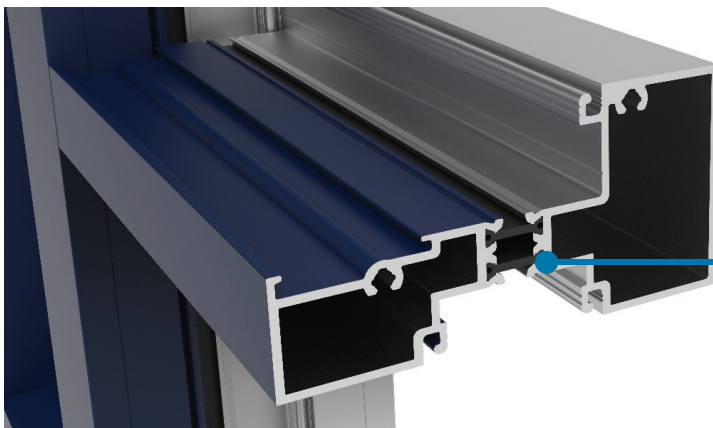
With the use of our hinged mullion setup, the YES 45 system direction can be changed to allow angles and curves to create more a aesthetic and functional design with your building project. The 165-180 degree hinged mullion can be combined with a 90 degree static mullion.

165-180 Degree Hinge Mullion



## ISO STRUTS

This system utilizes a dual barrier 6/6 polyamide iso strut set that secures the inner and outer mullion pieces together. This strut provides a thermal barrier that conserves energy and limits heat transference. It will not degrade, crack or break due to the glass-fiber reinforcement.



Additional information including CAD details, CSI specifications, Test Reports and Installation instructions are available online at:

[www.ykkap.com/commercial/product/storefronts/yes-45-ft/](http://www.ykkap.com/commercial/product/storefronts/yes-45-ft/)