



**BUILDING CODE COMPLIANCE OFFICE (BCCO)  
PRODUCT CONTROL DIVISION**

**MIAMI-DADE COUNTY, FLORIDA  
METRO-DADE FLAGLER BUILDING  
140 WEST FLAGLER STREET, SUITE 1603  
MIAMI, FLORIDA 33130-1563  
(305) 375-2901 FAX (305) 375-2908**

**NOTICE OF ACCEPTANCE (NOA)**

---

**YKK AP America, Inc.  
332 Firetower Road  
Dublin, GA 31021**

**SCOPE:**

This NOA is being issued under the applicable rules and regulations governing the use of construction materials. The documentation submitted has been reviewed by the BCCO and accepted by the Building Code and Product Review Committee (BCPRC) to be used in Miami Dade County and other areas where allowed by the Authority Having Jurisdiction (AHJ).

This NOA shall not be valid after the expiration date stated below. The BCCO (In Miami Dade County) and/or the AHJ (in areas other than Miami Dade County) reserve the right to have this product or material tested for quality assurance purposes. If this product or material fails to perform in the accepted manner, the manufacturer will incur the expense of such testing and the AHJ may immediately revoke, modify, or suspend the use of such product or material within their jurisdiction. BCPRC reserves the right to revoke this acceptance, if it is determined by BCCO that this product or material fails to meet the requirements of the applicable building code.

This product is approved as described herein, and has been designed to comply with the Florida Building Code, including the High Velocity Hurricane Zone.

**DESCRIPTION: Series YOW 225TUH Aluminum Mullion Clipped**

**APPROVAL DOCUMENT:** Drawing No. M01-01, titled "YOW-225 Alum. Mullions Clipped," sheets 1 through 5 of 5, prepared by AL-Farooq Corporation, dated 07/23/01 revision "E" dated 05/15/09; signed and sealed by Arshad Viqar, P.E., bearing the Miami-Dade County Product Control Revision stamp with the Notice of Acceptance number and expiration date by the Miami-Dade County Product Control Division.

**MISSILE IMPACT RATING: Large and Small Missile Impact**

**LABELING:** Each unit shall bear a permanent label with the manufacturer's name or logo, city, state and following statement: "Miami-Dade County Product Control Approved", unless otherwise noted herein.

**RENEWAL** of this NOA shall be considered after a renewal application has been filed and there has been no change in the applicable building code negatively affecting the performance of this product.

**TERMINATION** of this NOA will occur after the expiration date or if there has been a revision or change in the materials, use, and/or manufacture of the product or process. Misuse of this NOA as an endorsement of any product, for sales, advertising or any other purposes shall automatically terminate this NOA. Failure to comply with any section of this NOA shall be cause for termination and removal of NOA.

**ADVERTISEMENT:** The NOA number preceded by the words Miami-Dade County, Florida, and followed by the expiration date may be displayed in advertising literature. If any portion of the NOA is displayed, then it shall be done in its entirety.

**INSPECTION:** A copy of this entire NOA shall be provided to the user by the manufacturer or its distributors and shall be available for inspection at the job site at the request of the Building Official.

This NOA **revises and renews** NOA# 04-0603.04, and consists of this page 1 and evidence pages E-1, and E-2, as well as approval document mentioned above.

The submitted documentation was reviewed by **Fitz A. Harris, P.E.**,



*Fitz A. Harris*  
6/4/09

**NOA No 09-0121.04  
Expiration Date: February 21, 2014  
Approval Date: July,1, 2009**

**NOTICE OF ACCEPTANCE: EVIDENCE SUBMITTED**

**A. DRAWINGS**

1. Manufacturer's die drawings and sections.
2. Drawing No. **M01-01**, titled "YOW-225H Alum. Mullion Clipped," Sheets 1 through 5 of 5, prepared by AL-Farooq Corporation, dated 07/23/01 revision "E" dated 05/15/09, signed and sealed by Arshad Viqar, P.E.

**B. TESTS**

1. Test reports on 1) Air Infiltration Test, per FBC, TAS 202-94  
2) Uniform Static Air Pressure Test, Loading per FBC, TAS 202-94  
3) Water Resistance Test, per FBC, TAS 202-94  
4) Small Missile Impact Test per FBC, TAS 201-94  
5) Cyclic Wind Pressure Loading per FBC, TAS 203-94  
6) Forced Entry Test, per FBC 2411.3.2.1 and TAS 202-94  
along with installation diagram of a aluminum window wall system prepared by Hurricane Test Laboratory, (specimen 2,4,5,6), Test Report No.**HTL-0231-0521-00**, dated 05/17/00, signed and sealed by Vinu J. Abraham, P.E.  
**"Submitted under NOA # 01-1119.07"**
2. Test reports on 1) Air Infiltration Test, per FBC, TAS 202-94  
2) Uniform Static Air Pressure Test, Loading per FBC, TAS 202-94  
3) Water Resistance Test, per FBC, TAS 202-94  
4) Small Missile Impact Test per FBC, TAS 201-94  
5) Cyclic Wind Pressure Loading per FBC, TAS 203-94  
6) Forced Entry Test, per FBC 2411.3.2.1 and TAS 202-94  
along with installation diagram of a aluminum window wall system prepared by Hurricane Test Laboratory, Test Report No.**HTL-0105-1212-00**, dated 12/18-21/00, signed and sealed by Vinu J. Abraham, P.E.  
**"Submitted under NOA # 01-1119.07"**
3. Test reports on 1) Large Missile Impact Test per FBC, TAS 201-94  
2) Cyclic Loading Test, per FBC, TAS 203-94  
along with installation diagram of a aluminum window wall system (specimen 1,2), prepared by Hurricane Test Laboratory, Test Report No.**HTL-0231-0810-02**, dated 08/12-14/02, signed and sealed by Vinu J. Abraham, P.E.
4. Test reports on 1) Air Infiltration Test, per FBC, TAS 202-94  
2) Uniform Static Air Pressure Test, Loading per FBC, TAS 202-94  
3) Water Resistance Test, per FBC, TAS 202-94  
4) Forced Entry Test, per FBC 2411.3.2.1 and TAS 202-94  
along with installation diagram of a window wall system prepared by Hurricane Test Laboratory, Test Report No.**HTL-0231-1210-02**, dated 12/09-02/10/03, signed and sealed by Vinu J. Abraham, P.E.

  
Fitz A. Harris, P.E.

Product Control Examiner  
NOA No 09- 0121.04

Expiration Date: February 21, 2014

Approval Date: July 1, 2009

**YKK AP America, Inc.**

**NOTICE OF ACCEPTANCE: EVIDENCE SUBMITTED**

**C. CALCULATIONS:**

1. Anchor Calculations, ASTM-E1300, structural analysis, prepared, signed and sealed by Humayoun Farooq, P.E dated 12/23/08

**D. QUALITY ASSURANCE**

1. Miami Dade Building Code Compliance Office (BCCO)

**E. MATERIAL CERTIFICATIONS**

1. None

**F. STATEMENTS**

1. Statement letter of no financial interest, dated 1/08/09, signed and sealed by Humayoun Farooq, P.E.
2. Statement letter of conformance, dated 12/23/08, signed and sealed by Humayoun Farooq, P.E.
3. Statement letter of compliance and no financial interest dated 5/19/09, signed and sealed by Arshad Viqar, P.E

**G. OTHER**

1. Notice of Acceptance No. **04-0603.04**, issued to YKK AP America for their Series "YOW-200H/225TUH" Aluminum Mullion Clipped, approved on 09/09/04 and expiring on 02/21/09.
2. Letter from the consultant stating that the product is in compliance with the Florida Building Code (FBC)



---

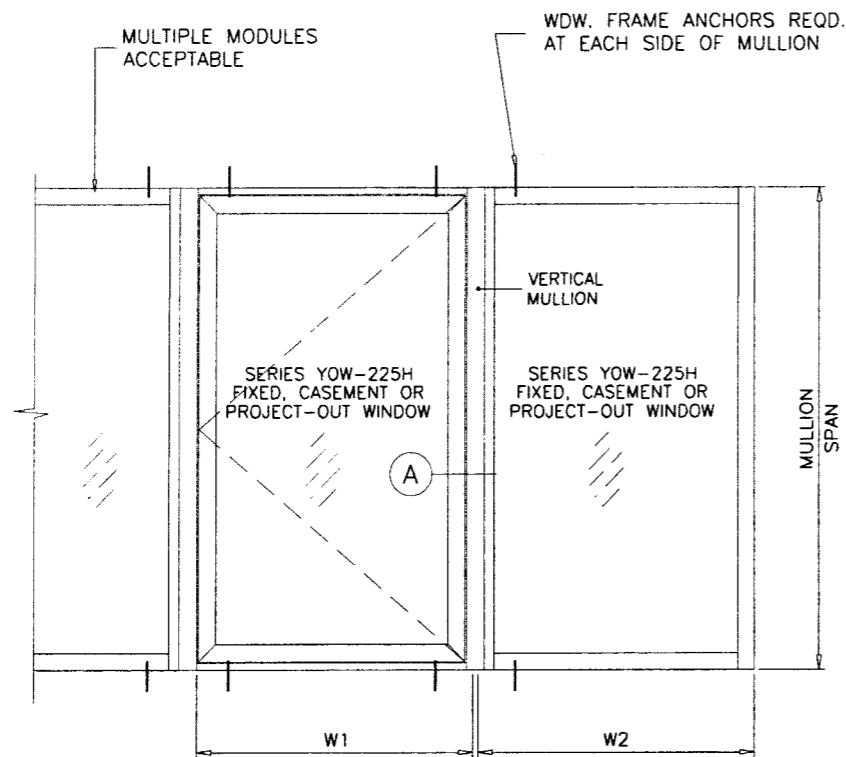
Fitz A. Harris, P.E.

Product Control Examiner

NOA No 09- 0121.04

Expiration Date: February 21, 2014

Approval Date: July 1, 2009

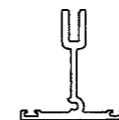


$$\text{AVG. WIDTH} = \frac{W1 + W2}{2}$$

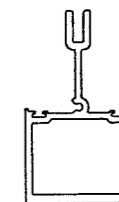
TYPICAL MULLION ARRANGEMENTS

DESIGN LOAD CAPACITY - PSF		
AVG. WIDTH INCHES	MULLION SPAN INCHES	STD. MULLION EXT.(+)/INT.(-)
24"	42"	80.0
30"		80.0
36"		80.0
38"		80.0
42"		80.0
48"		76.0
54"	67.6	
24"	48"	80.0
30"		80.0
36"		80.0
38"		80.0
42"		76.0
48"		66.5
24"	54"	80.0
30"		80.0
36"		78.8
38"		74.7
42"		67.6
48"		67.2
24"	60"	80.0
30"		80.0
36"		70.9
38"		67.2
42"		67.6
48"		66.5
24"	62"	80.0
30"		80.0
36"		68.6
38"		65.0
42"		67.6
48"		66.5

DESIGN LOAD CAPACITY - PSF		
AVG. WIDTH INCHES	MULLION SPAN INCHES	HEAVY MULLION EXT.(+)/INT.(-)
24"	66"	65.0
30"		65.0
36"		65.0
42"		65.0
48"		65.0
54"		65.0
60"	65.0	
62-3/8"	65.0	
24"	72"	65.0
30"		65.0
36"		65.0
42"		65.0
48"		65.0
54"		65.0
60"	61.9	
62-3/8"	59.5	
24"	78"	65.0
30"		65.0
36"		65.0
42"		65.0
48"		65.0
54"		58.6
60"	52.7	
62-3/8"	50.7	
24"	84"	65.0
30"		65.0
36"		65.0
42"		65.0
48"		56.9
54"		50.5
60"	45.5	
62-3/8"	43.7	



STD. MULLION



HEAVY MULLION

PRODUCT REVISED  
 as complying with the Florida  
 Building Code  
 Acceptance No 09-0121-04  
 Expiration Date 2-21-2014  
 By *Dita Harris*  
 Miami Dade Product Control  
 Division

MULLION SYSTEM IS RATED FOR LARGE MISSILE IMPACT.  
 AND CAN BE USED WITH ALL MIAMI-DADE COUNTY APPROVED  
 LARGE/SMALL MISSILE IMPACT AND NON-IMPACT RESISTANT PRODUCTS.

**VERTICAL ALUMINUM MULLION  
 WINDOW FRAME MEMBERS INCLUDED IN PROPERTIES**

USE WITH:  
 SERIES 225H FIXED WINDOW  
 SERIES 225TUH FIXED WINDOW  
 SERIES 225H CASEMENT WINDOW  
 SERIES 225TUH CASEMENT WINDOW  
 SERIES 225H PROJECT OUT WINDOW  
 SERIES 225TUH PROJECT OUT WINDOW  
 AND ANY COMBINATION OF ABOVE.  
 FOR WINDOWS IMPACT AND LOAD RATINGS SEE SEPARATE NOA'S.  
 LOWER DESIGN PRESSURE FROM WINDOW APPROVALS OR  
 MULLION CHARTS WILL APPLY TO ENTIRE SYSTEM.

**NOTES:**  
 THIS PRODUCT HAS BEEN DESIGNED AND TESTED TO COMPLY WITH THE  
 REQUIREMENTS OF THE FLORIDA BUILDING CODE 2004/2007 EDITION INCLUDING  
 HIGH VELOCITY HURRICANE ZONE (HVHZ).  
 ALL GLAZING PRODUCTS USED WITH THESE MULLIONS MUST MEET THE  
 APPLICABLE BUILDING CODE REQUIREMENTS I.E: WIND LOAD, WATER  
 INFILTRATION, FORCED ENTRY RESISTANCE, SAFEGUARDS ETC.  
 WOOD BUCKS BY OTHERS, MUST BE ANCHORED PROPERLY TO TRANSFER  
 LOADS TO THE STRUCTURE.  
 ANCHORS SHALL BE AS LISTED, SPACED AS SHOWN ON DETAILS, EMBEDMENT  
 TO BASE MATERIAL SHALL BE BEYOND WALL COVERING (STUCCO, TILE ETC.).  
 ANCHORING CONDITIONS OTHER THAN THOSE SHOWN IN THESE DETAILS  
 ARE NOT PART OF THIS APPROVAL.  
 A LOAD DURATION INCREASE IS USED IN DESIGN OF ANCHORS INTO WOOD ONLY.  
 MATERIALS INCLUDING BUT NOT LIMITED TO STEEL/METAL SCREWS, THAT COME INTO  
 CONTACT WITH OTHER DISSIMILAR MATERIALS SHALL MEET THE REQUIREMENTS  
 OF 2004/2007 FLORIDA BLDG. CODE SECTION 2003.8.4.

**INSTRUCTIONS:**  
 USE CHARTS AND GRAPHS AS FOLLOWS.

- STEP 1** DETERMINE DESIGN LOAD REQUIRED PER ASCE 7 FOR PARTICULAR OPENING.
- STEP 2** USE MIAMI-DADE COUNTY APPROVED GLAZING PRODUCTS MEETING ABOVE LOAD REQUIREMENTS.
- STEP 3** USE CONNECTION TO MULLION AS PER PRODUCT APPROVAL.
- STEP 4** USING MULLION LOAD CHART DETERMINE MULLION CAPACITY WHICH MUST EXCEED THE DESIGN LOAD SPECIFIED IN STEP 1 ABOVE.
- STEP 5** LOWER VALUE FROM WINDOW OR MULLION APPROVAL WILL APPLY TO ENTIRE SYSTEM.

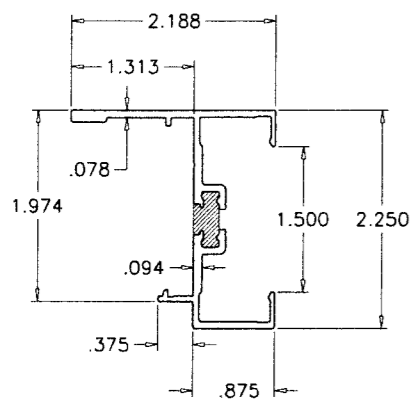
Engr. ARSHAD VIQAR  
 CIVIL  
 FLA. PE # 38863  
 C.A.N. 3538  
  
 MAY 19 2009

**AL-FAROOQ CORPORATION**  
 ENGINEERS & PRODUCT DEVELOPMENT  
 1235 S.W. 87 AVE  
 MIAMI, FLORIDA 33174  
 TEL. (305) 264-8100 FAX. (305) 262-6978  
 MULLION\01-01YK

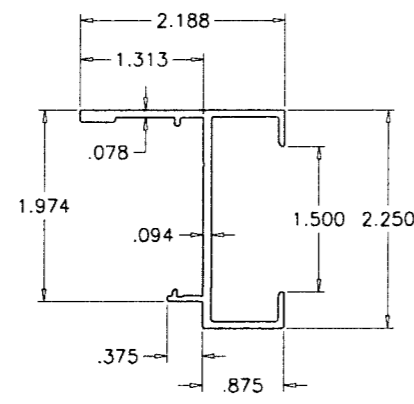
SERIES YOW-225H ALUM MULLION CLIPPED  
**YKK AP AMERICA INC.**  
 332 FIRETOWER ROAD  
 DUBLIN, GEORGIA 31021  
 TEL.(478) 277-1955 FAX(478) 277-1978

no	date	description	by
A	12.12.02	LARGE MISSILE IMPACT ADD.	
B	01.28.04	225H FRAME ADDED	
C	08.04.04	REV. PER BCCO COMMENTS	
D	12.24.08	UPDATED FOR 2007 FBC	
E	05.15.09	NO CHANGE THIS SHEET	

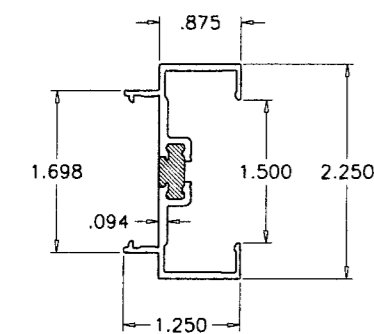
date: 07-23-01  
 scale: 1/2"=1'-0"  
 dr. by: HAMID  
 chk. by:  
 drawing no.  
**M01-01**  
 sheet 1 of 5



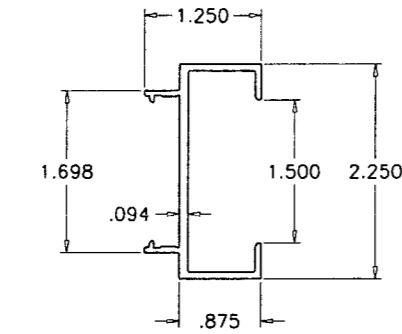
1 **THERMAL WINDOW FRAME (YOW-225H)**  
6063-T5  
BE9-4502



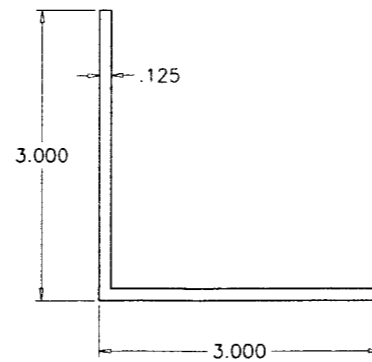
3 **NON-THERMAL WINDOW FRAME (YOW-225H)**  
6063-T5  
E9-4537



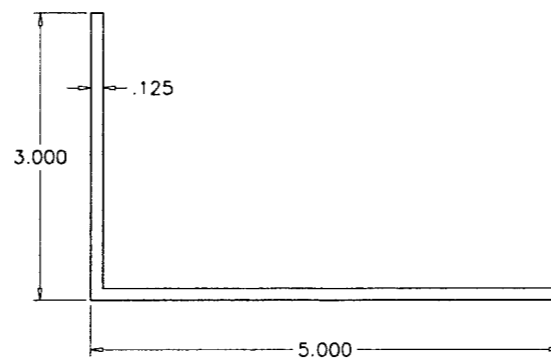
2 **THERMAL WINDOW FRAME (YOW-225H)**  
6063-T5  
BE9-4503



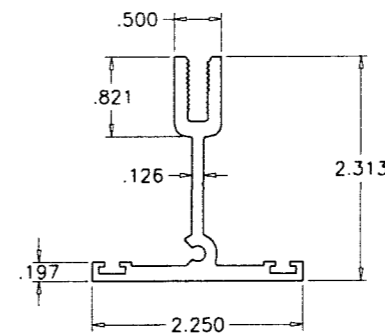
4 **NON-THERMAL WINDOW FRAME (YOW-225H)**  
6063-T5  
E9-4538



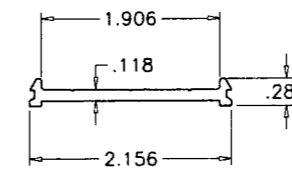
10 **STD. MULLION CLIP**  
6063-T5



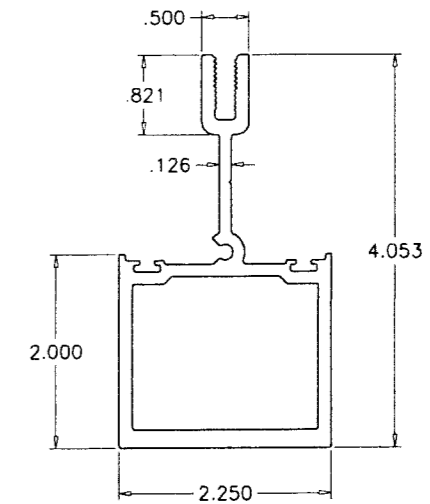
11 **HEAVY MULLION CLIP**  
6063-T5



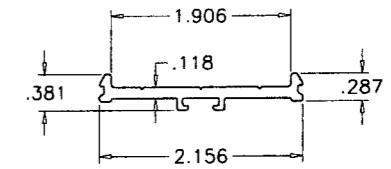
5 **STD. STACK MULLION**  
6063-T5  
E9-4427



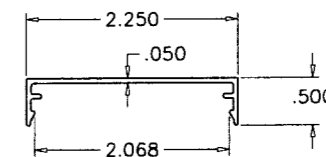
6 **STD. SNAP COVER BASE**  
6063-T5  
E9-4428



7 **HEAVY STACK MULLION**  
6063-T5  
E9-4518



8 **HEAVY SNAP COVER BASE**  
6063-T5  
AS-4231



9 **SNAP COVER**  
6063-T5  
E9-5111

ITEM NO.	PART NUMBER	QUANTITY	DESCRIPTION	MATERIAL	MANF./SUPLIER/REMARKS
1	BE9-4502	AS REQD.	THERMAL WINDOW FRAME (YOW-225H)	6063-T5	YKK AP AMERICA INC.
2	BE9-4503	AS REQD.	THERMAL WINDOW FRAME (YOW-225H)	6063-T5	YKK AP AMERICA INC.
3	E9-4537	AS REQD.	NON-THERMAL WINDOW FRAME (YOW-225H)	6063-T5	YKK AP AMERICA INC.
4	BE9-4538	AS REQD.	NON-THERMAL WINDOW FRAME (YOW-225H)	6063-T5	YKK AP AMERICA INC.
5	E9-4427	AS REQD.	STD. STACK MULLION	6063-T5	YKK AP AMERICA INC.
6	E9-4428	AS REQD.	STD. SNAP COVER BASE	6063-T5	YKK AP AMERICA INC.
7	E9-4518	AS REQD.	HEAVY STACK MULLION	6063-T5	YKK AP AMERICA INC.
8	AS-4231	AS REQD.	HEAVY SNAP COVER BASE	6063-T5	YKK AP AMERICA INC.
9	E9-5111	AS REQD.	SNAP COVER	6063-T5	YKK AP AMERICA INC.
10	-	AS REQD.	STD. MULLION CLIP	6063-T5	YKK AP AMERICA INC.
11	-	AS REQD.	HEAVY MULLION CLIP	6063-T5	YKK AP AMERICA INC.

Engr: ARSHAD VIQAR  
CIVIL  
FLA. PE # 38863  
C.A.N. 3538

*Arshad Viqar*

MAY 19 2009

PRODUCT REVISED  
as complying with the Florida  
Building Code  
Acceptance No 09-0121-04  
Expiration Date 2-21-2014  
By Siti Harris  
Miami Dade Product Control  
Division

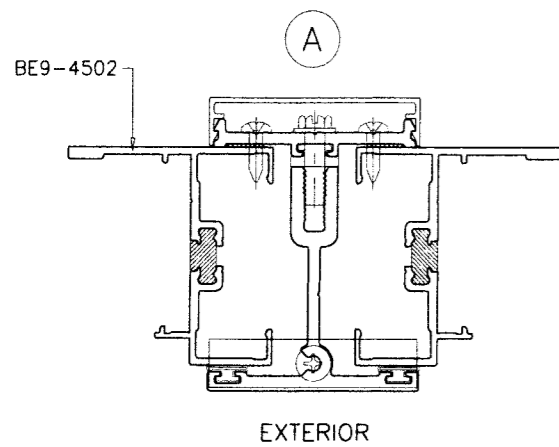
**afC**  
**AL-FAROOQ CORPORATION**  
ENGINEERS & PRODUCT DEVELOPMENT  
1235 S.W. 87 AVE  
MIAMI, FLORIDA 33174  
TEL. (305) 264-8100 FAX. (305) 262-6978  
MULLION\01-01YKK

SERIES YOW-225H ALUM MULLION CLIPPED  
**YKK AP AMERICA INC.**  
332 FIRETOWER ROAD  
DUBLIN, GEORGIA 31021  
TEL. (478) 277-1955 FAX (478) 277-1978

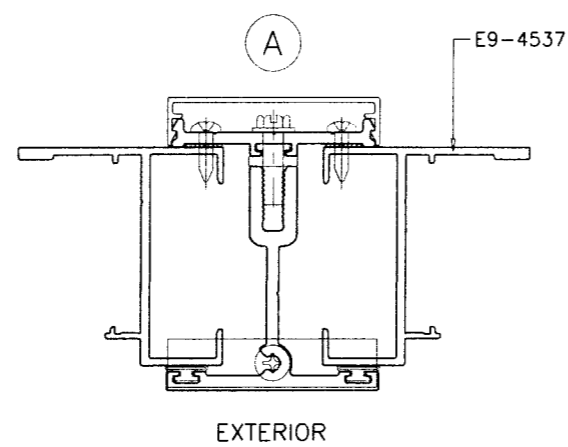
revisions:	no	date	by	description
	A	12.12.02		NO CHANGE THIS SHEET
	B	01.28.04		225H FRAME ADDED
	C	08.04.04		NO CHANGE THIS SHEET
	D	12.24.08		UPDATED FOR 2007 FBC
	E	05.15.09		REV. PER BCCO COMMENTS

date: 07-23-01  
scale: 1/2" = 1"  
dr. by: HAMID  
chk. by:

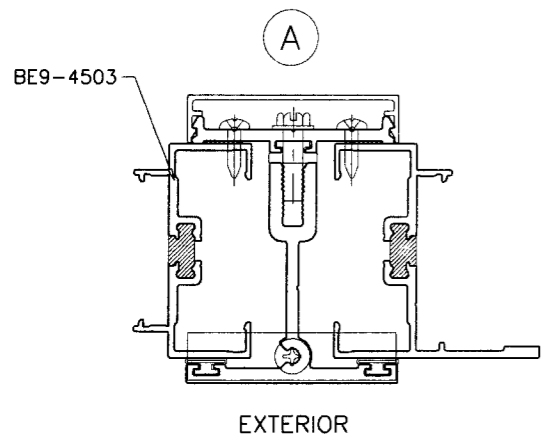
drawing no.  
**M01-01**  
sheet 2 of 5



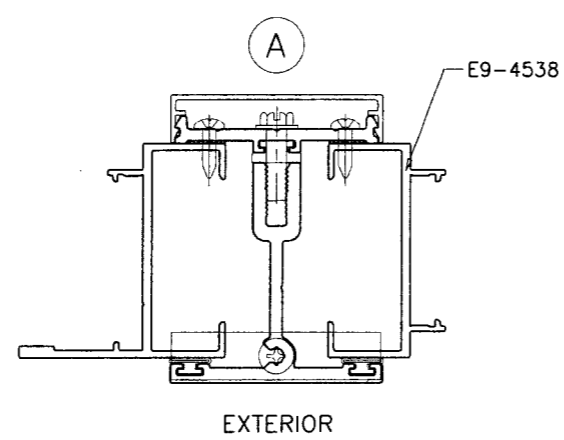
EXTERIOR



EXTERIOR

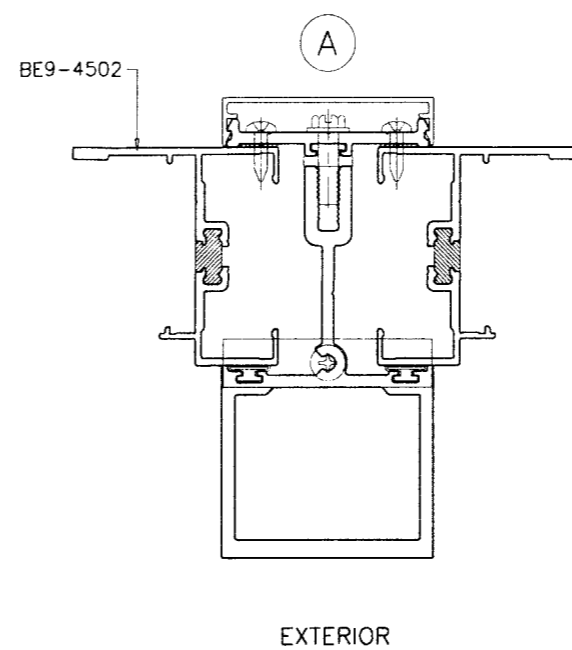


EXTERIOR

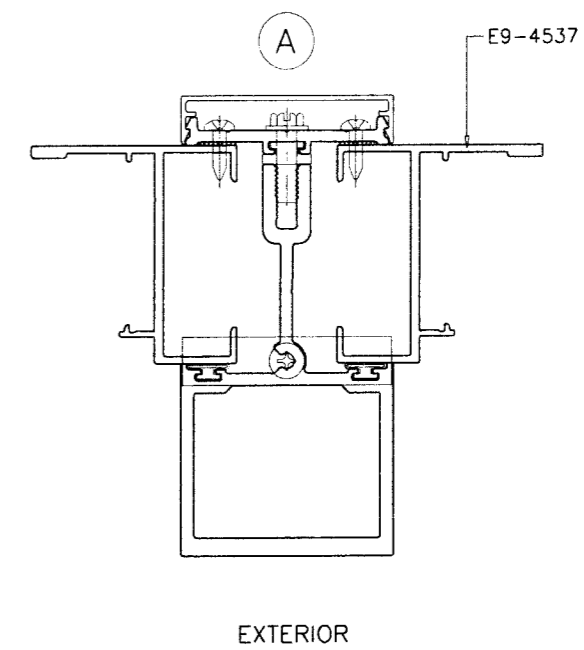


EXTERIOR

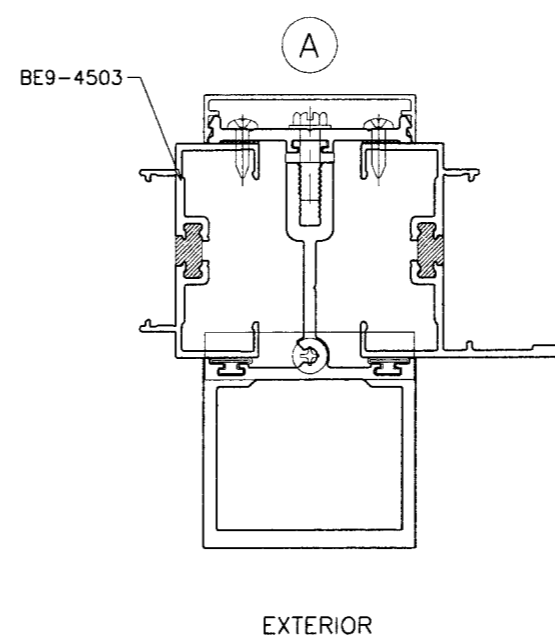
STD. MULLION



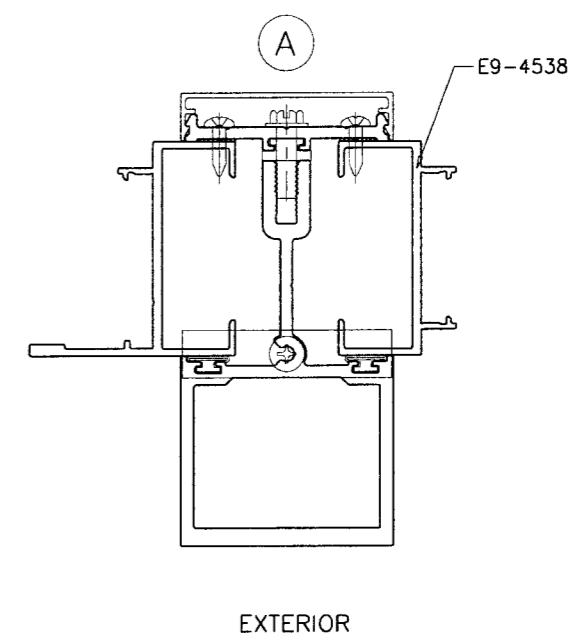
EXTERIOR



EXTERIOR



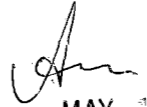
EXTERIOR



EXTERIOR

HEAVY MULLION

**PRODUCT REVISED**  
 as complying with the Florida  
 Building Code  
 Acceptance No 09-0121-04  
 Expiration Date 2-21-2014  
 By Jitz Harris  
 Miami Dade Product Control  
 Division

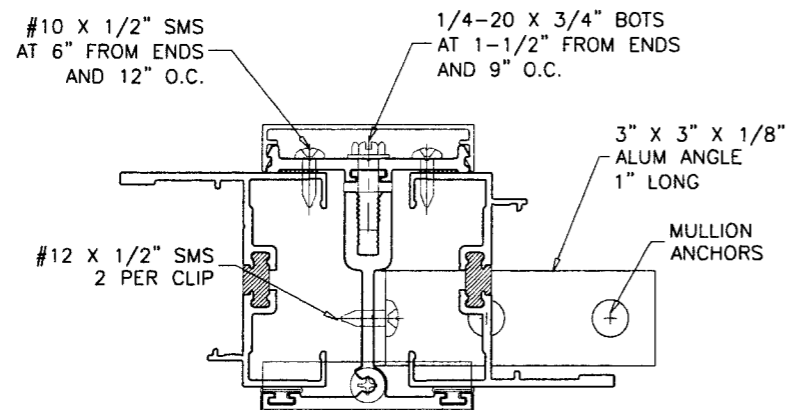
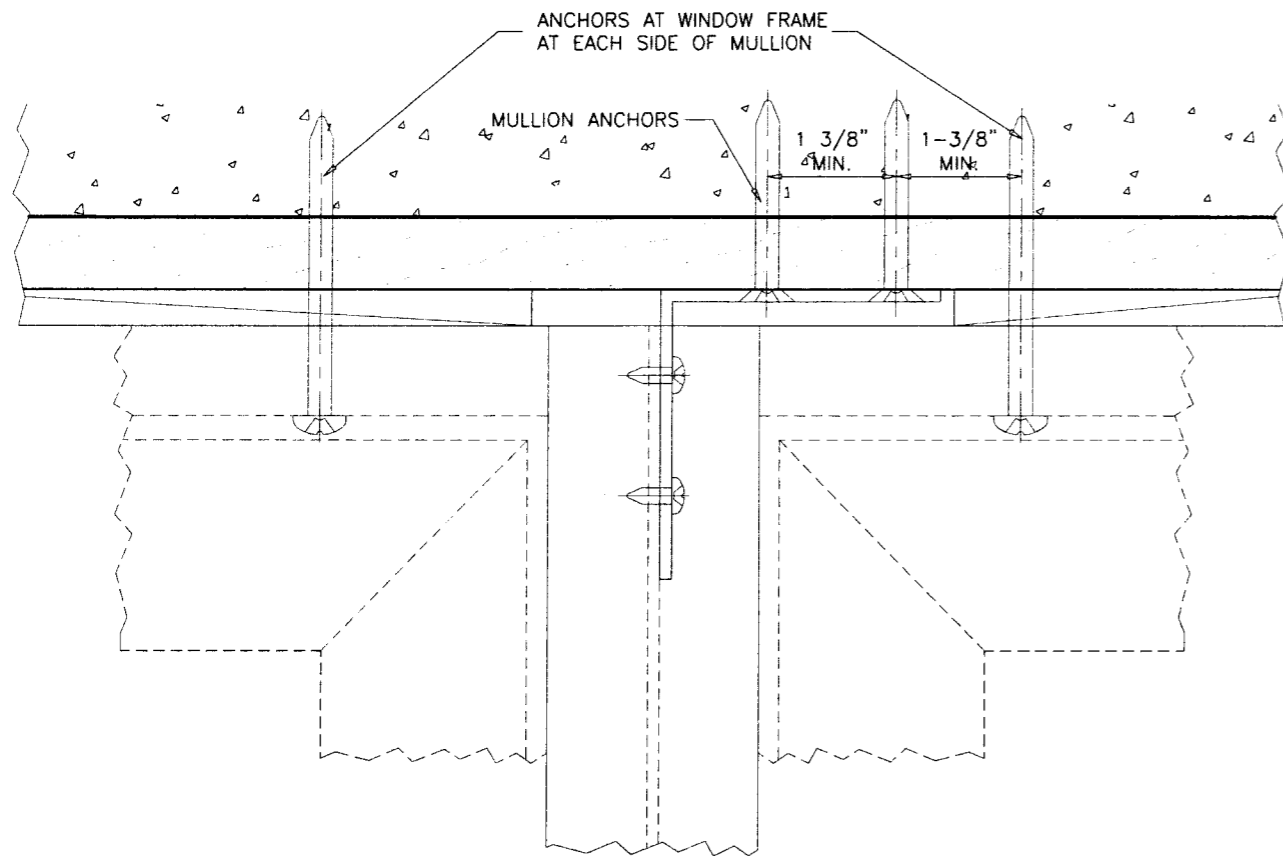
Engr: ARSHAD VIQAR  
 CIVIL  
 FLA. PE # 38863  
 C.A.N. 3538  
  
 MAY 19 2009

**af c**  
**AL-FAROOQ CORPORATION**  
 ENGINEERS & PRODUCT DEVELOPMENT  
 1235 S.W. 87 AVE  
 MIAMI, FLORIDA 33174  
 TEL. (305) 264-8100 FAX. (305) 262-6978  
 MULLION\01-01YKK

SERIES YOW-225H ALUM MULLION CLIPPED  
**YKK AP AMERICA INC.**  
 332 FIRETOWER ROAD  
 DUBLIN, GEORGIA 31021  
 TEL. (478) 277-1955 FAX (478) 277-1978

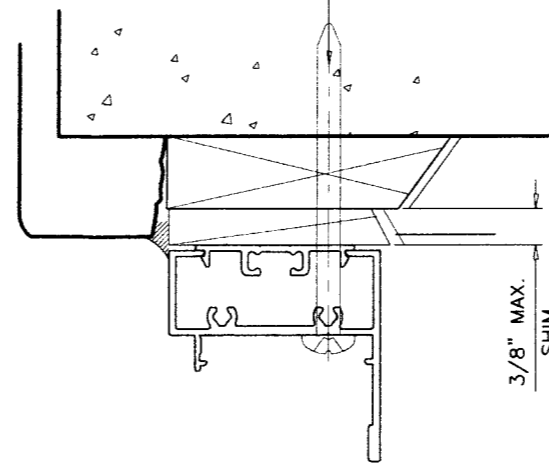
no	date	by	description
A	12.12.02		NO CHANGE THIS SHEET
B	01.28.04		225H FRAME ADDED
C	08.04.04		NO CHANGE THIS SHEET
D	12.24.08		UPDATED FOR 2007 FBC
E	05.15.09		NO CHANGE THIS SHEET

date: 07-23-01  
 scale: 1/2" = 1"  
 dr. by: HAMID  
 chk. by:  
 drawing no.  
**M01-01**  
 sheet 3 of 5

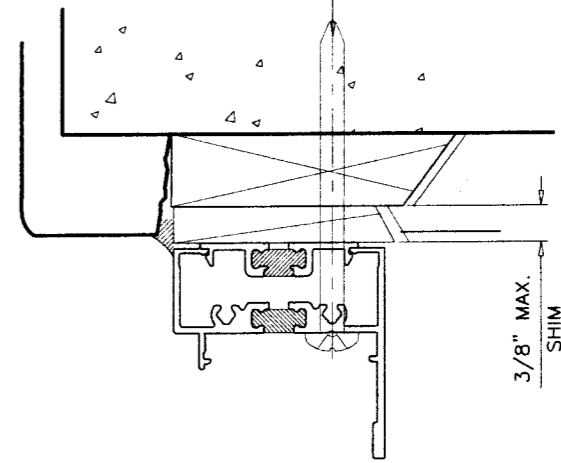


**STD. MULLION CONNECTION**  
TYP. AT HEAD AND SILL

WINDOW FRAME ANCHORS  
(1) AT EACH SIDE OF MULLION  
SEE CORRESPONDING NOA FOR SPACING



WINDOW FRAME ANCHORS  
(1) AT EACH SIDE OF MULLION  
SEE CORRESPONDING NOA FOR SPACING



WOOD BUCKS AND METAL STRUCTURE NOT BY YKK AMERICA INC.  
MUST SUSTAIN LOADS IMPOSED BY GLAZING SYSTEM  
AND TRANSFER THEM TO THE BUILDING STRUCTURE.

**MULLION ANCHORS:**

**1/4" DIA. ULTRACON BY 'ELCO'** (Fu=177 KSI, Fy=155 KSI)

INTO 2BY WOOD BUCKS OR WOOD STRUCTURES  
1-1/2" MIN. PENETRATION INTO WOOD

THRU 1BY BUCKS INTO CONCRETE  
1-1/4" MIN. EMBED INTO CONCRETE

DIRECTLY INTO CONCRETE  
1-1/4" MIN. EMBED INTO CONCRETE

**1/4" DIA. TEKS/DRIL-FLEX SELF DRILLING SCREWS** (GRADE 2 CRS)

INTO METAL STRUCTURES

STEEL : 12 GA. MIN. (Fy = 36 KSI MIN.)

ALUMINUM : 1/8" THK. MIN. (6063-T5 MIN.)

(STEEL IN CONTACT WITH ALUMINUM TO BE PLATED OR PAINTED)

**#14 SMS**

INTO METAL STRUCTURES (NO SHIM SPACE)

STEEL : 12 GA. MIN. (Fy = 36 KSI MIN.)

ALUMINUM : 1/8" THK. MIN. (6063-T5 MIN.)

(STEEL IN CONTACT WITH ALUMINUM TO BE PLATED OR PAINTED)

**TYPICAL EDGE DISTANCE**

INTO CONCRETE AND MASONRY = 2" MIN.

INTO WOOD STRUCTURE = 1" MIN.

INTO METAL STRUCTURE = 3/4" MIN.

CONCRETE f'c = 3000 PSI MIN.

PRODUCT REVISED  
as complying with the Florida  
Building Code  
Acceptance No **09-0121-04**  
Expiration Date **2-21-2014**

By *John Harris*  
Miami Dade Product Control  
Division

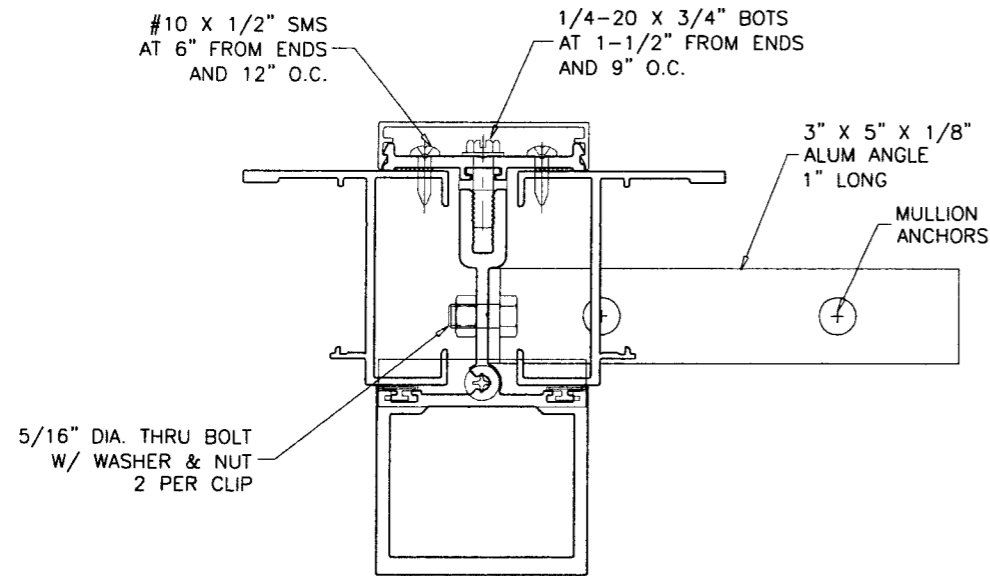
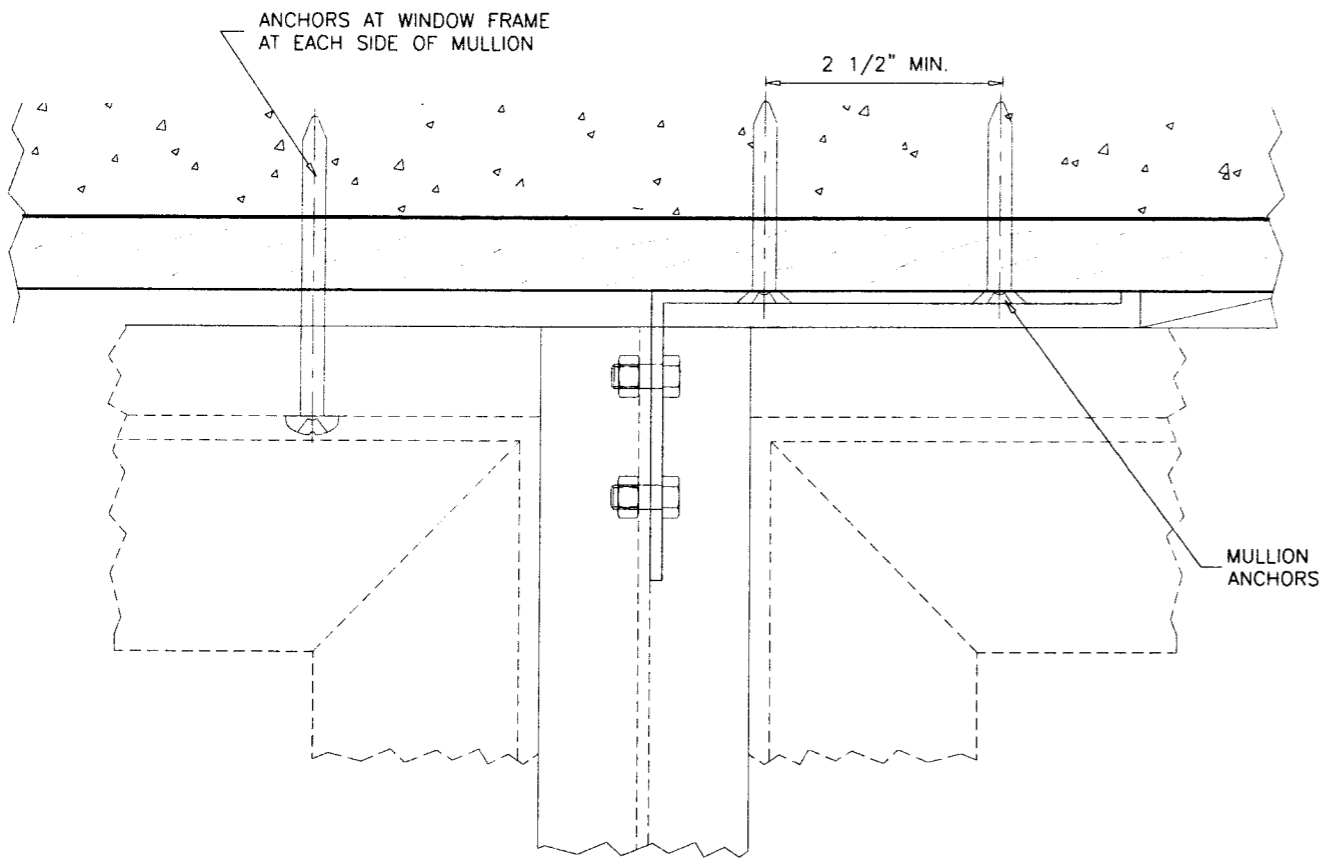
Engr: ARSHAD VIQAR  
CIVIL  
FLA. PE # 38863  
C.A.N. 3538  
*Arshad Viqar*  
MAY 19 2009

**af c**  
**AL-FAROOQ CORPORATION**  
ENGINEERS & PRODUCT DEVELOPMENT  
1235 S.W. 87 AVE  
MIAMI, FLORIDA 33174  
TEL. (305) 264-8100 FAX. (305) 262-6978

SERIES YOW-225H ALUM MULLION CLIPPED  
**YKK AP AMERICA INC.**  
332 FIRETOWER ROAD  
DUBLIN, GEORGIA 31021  
TEL. (478) 277-1955 FAX (478) 277-1978

no	date	by	description
A	12.12.02	ANCHORS REV.	
B	01.28.04	225H FRAME ADDED	
C	08.04.04	NO CHANGE THIS SHEET	
D	12.24.08	UPDATED FOR 2007 FBC	
E	05.15.09	REV. PER BCCO COMMENTS	

date: 07-23-01  
scale: 1/2" = 1"  
dr. by: HAMID  
chk. by:  
drawing no.  
**M01-01**  
sheet 4 of 5



**HEAVY MULLION CONNECTION**  
TYP. AT HEAD AND SILL

WOOD BUCKS AND METAL STRUCTURE NOT BY YKK AMERICA INC.  
MUST SUSTAIN LOADS IMPOSED BY GLAZING SYSTEM  
AND TRANSFER THEM TO THE BUILDING STRUCTURE.

**MULLION ANCHORS:**

**1/4" DIA. ULTRACON BY 'ELCO'** (Fu=177 KSI, Fy=155 KSI)

INTO 2BY WOOD BUCKS OR WOOD STRUCTURES  
1-1/2" MIN. PENETRATION INTO WOOD

THRU 1BY BUCKS INTO CONCRETE  
1-1/4" MIN. EMBED INTO CONCRETE

DIRECTLY INTO CONCRETE  
1-1/4" MIN. EMBED INTO CONCRETE

**1/4" DIA. TEKS/DRIL-FLEX SELF DRILLING SCREWS** (GRADE 2 CRS)

INTO METAL STRUCTURES  
STEEL : 12 GA. MIN. (Fy = 36 KSI MIN.)  
ALUMINUM : 1/8" THK. MIN. (6063-T5 MIN.)  
(STEEL IN CONTACT WITH ALUMINUM TO BE PLATED OR PAINTED)

**#14 SMS**

INTO METAL STRUCTURES (NO SHIM SPACE)  
STEEL : 12 GA. MIN. (Fy = 36 KSI MIN.)  
ALUMINUM : 1/8" THK. MIN. (6063-T5 MIN.)  
(STEEL IN CONTACT WITH ALUMINUM TO BE PLATED OR PAINTED)

**TYPICAL EDGE DISTANCE**

INTO CONCRETE AND MASONRY = 2" MIN.  
INTO WOOD STRUCTURE = 1" MIN.  
INTO METAL STRUCTURE = 3/4" MIN.

CONCRETE f'c = 3000 PSI MIN.

Engr: ARSHAD VIQAR  
CIVIL  
FLA. PE # 38863  
C.A.N. 3538  
*Ar*  
MAY 19 2009

**PRODUCT REVISED**  
as complying with the Florida  
Building Code  
Acceptance No 09-0121-04  
Expiration Date 2-21-2014  
By *Gity Harris*  
Miami Dade Product Control  
Division

**af c**  
**AL-FAROOQ CORPORATION**  
ENGINEERS & PRODUCT DEVELOPMENT  
1235 S.W. 87 AVE  
MIAMI, FLORIDA 33174  
TEL. (305) 264-8100 FAX. (305) 262-6978  
MULLION\01-01YKK

SERIES YOW-225H ALUM MULLION CLIPPED  
**YKK AP AMERICA INC.**  
332 FIRETOWER ROAD  
DUBLIN, GEORGIA 31021  
TEL.(478) 277-1955 FAX(478) 277-1978

no	date	by	description
A	12.12.02	ANCHORS REV.	
B	01.28.04	225H FRAME ADDED	
C	08.04.04	NO CHANGE THIS SHEET	
D	12.24.08	UPDATED FOR 2007 FBC	
E	05.15.09	REV. PER BCCO COMMENTS	

date: 07-23-01  
scale: 1/2" = 1"  
dr. by: HAMID  
chk. by:  
drawing no.  
**M01-01**  
sheet 5 of 5