

**TABLE OF CONTENTS**

**YCW 752 OUTSIDE GLAZED CURTAIN WALL SYSTEM  
FOR 1/4" GLAZING AND 1" GLAZING**

**PICTORIAL VIEW..... Page 2**

**FRAMING MEMBERS..... Page 3**  
**FOR 1/4" GLAZING**

**DOOR FRAMING MEMBERS..... Page 4**  
**FOR 1/4" GLAZING**

**FRAMING MEMBERS..... Pages 5 & 6**  
**FOR 1" GLAZING**

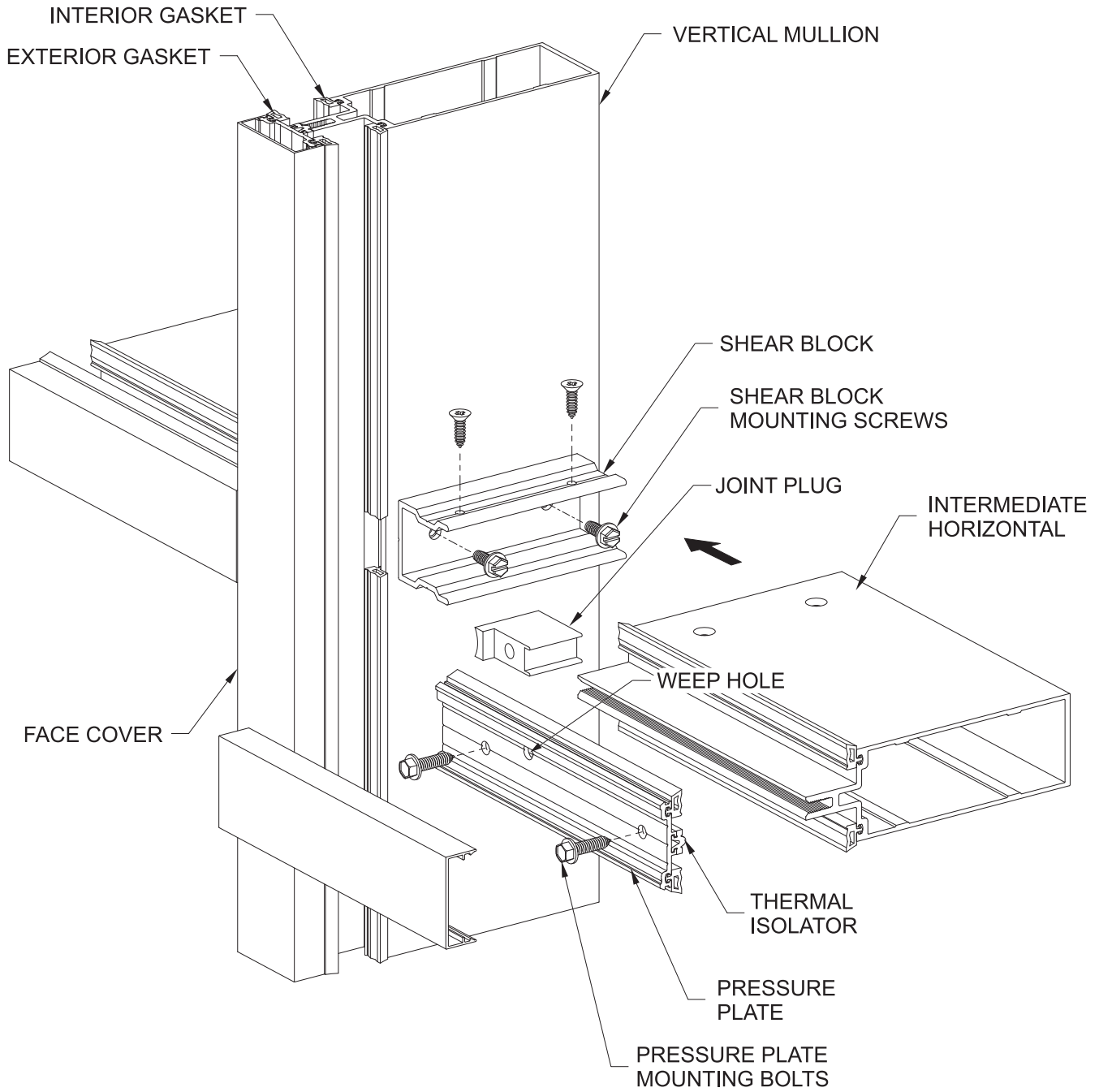
**DOOR FRAMING MEMBERS..... Page 7**  
**FOR 1" GLAZING**

**VENEER WALL FRAMING MEMBERS..... Page 8**

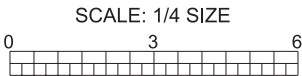
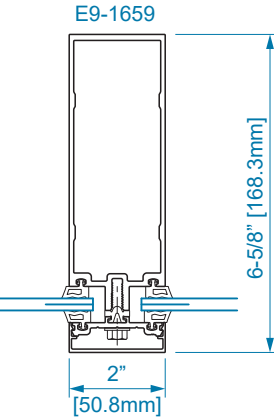
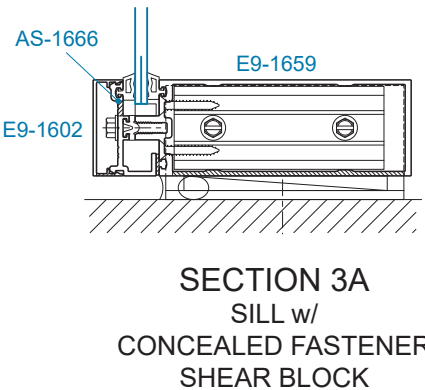
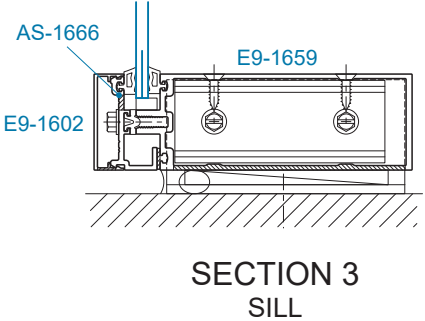
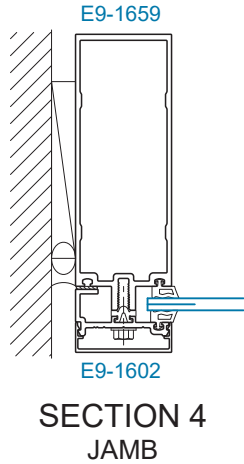
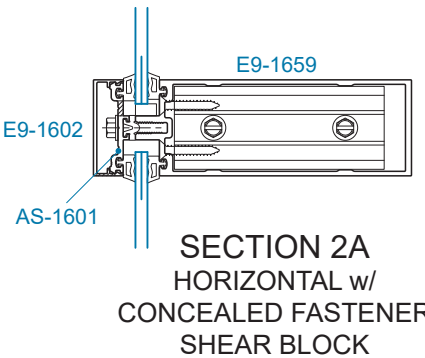
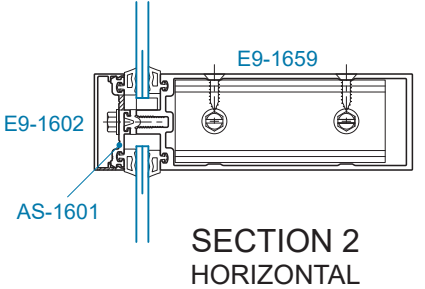
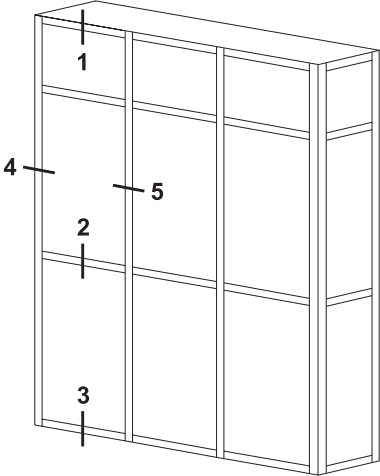
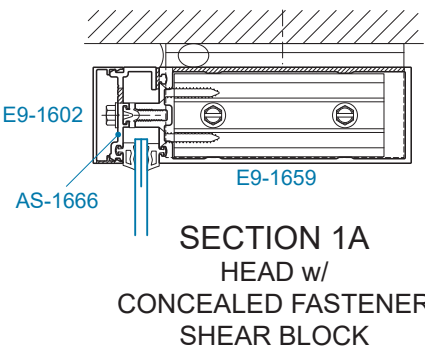
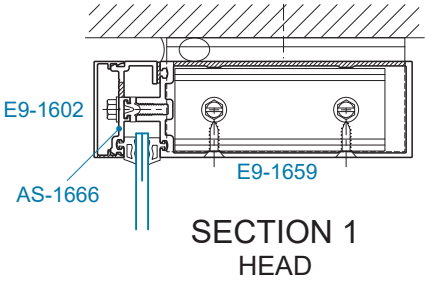
**WIND LOAD CHARTS..... Page 9**

\*The latest installation instructions for this product are available at [www.ykkap.com](http://www.ykkap.com).

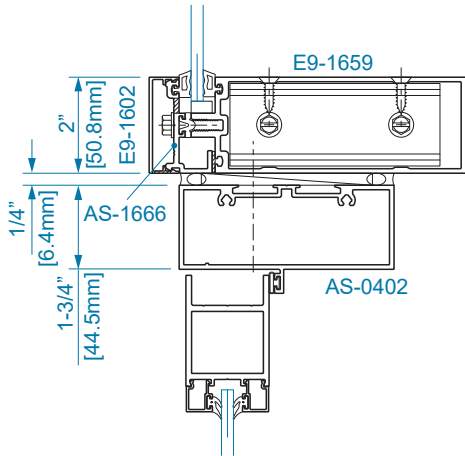
**YCW 752 Outside Glazed Curtain Wall System**



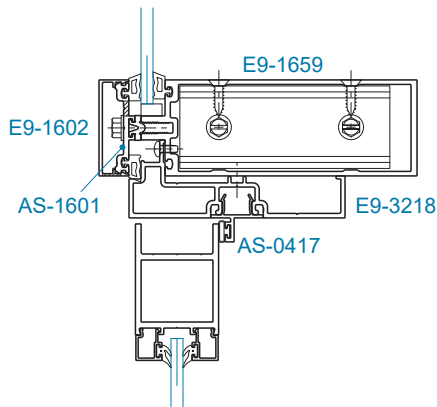
YCW 752 Framing Members for 1/4" Glazing



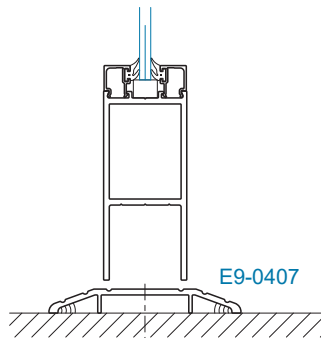
## YCW 752 Door Framing Members for 1/4" Glazing



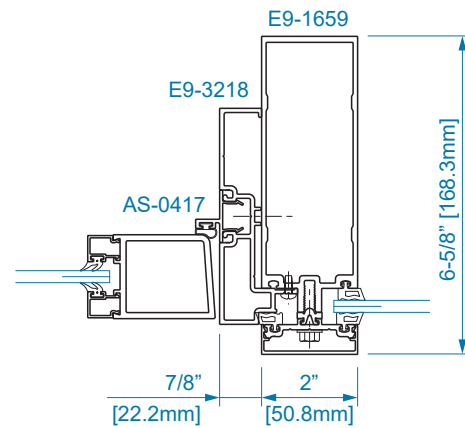
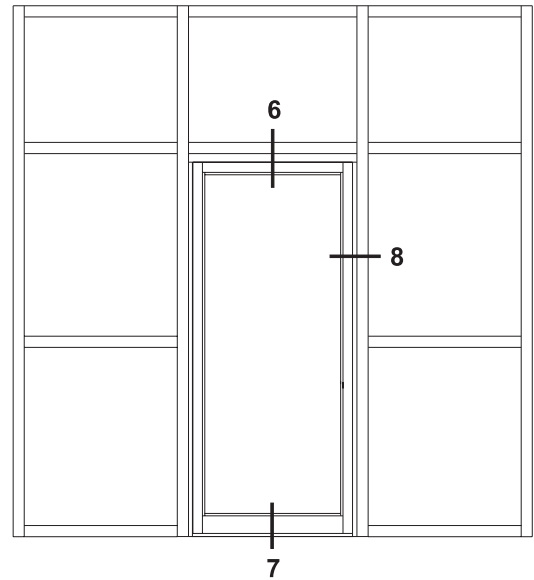
**SECTION 6  
TRANSOM BAR**



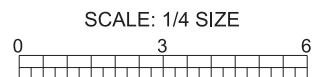
**SECTION 6  
OPTIONAL TRANSOM BAR  
(Limited Hardware Applications)**



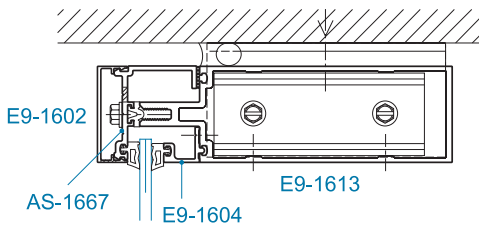
**SECTION 7  
BOTTOM RAIL**



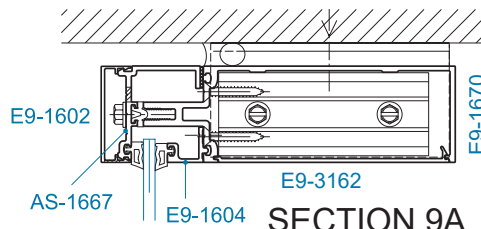
**SECTION 8  
DOOR JAMB**



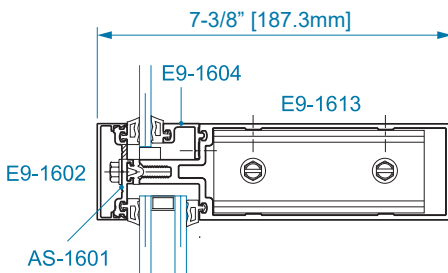
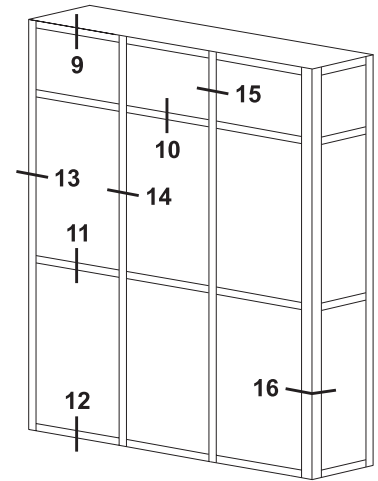
## YCW 752 Framing Members for 1" Glazing



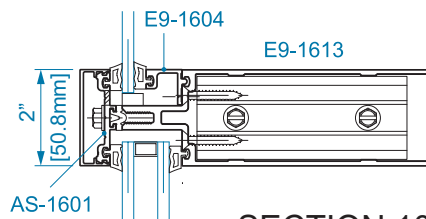
**SECTION 9**  
HEAD



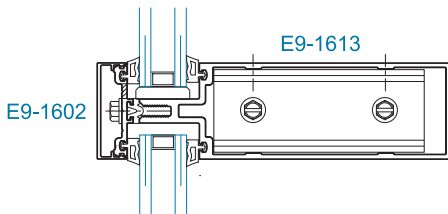
**SECTION 9A**  
2 PC. HEAD w/  
CONCEALED FASTENER  
SHEAR BLOCK



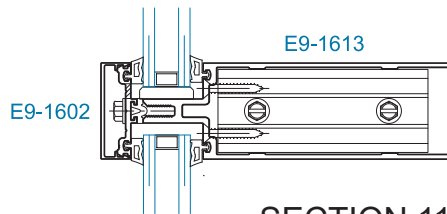
**SECTION 10**  
HEAD



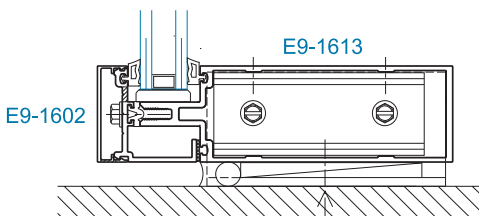
**SECTION 10A**  
HORIZONTAL w/  
CONCEALED FASTENER  
SHEAR BLOCK



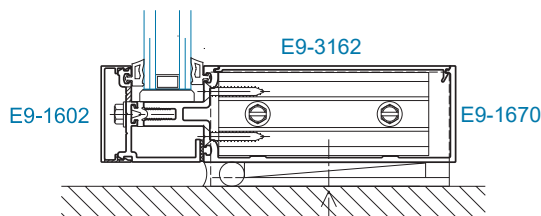
**SECTION 11**  
HORIZONTAL



**SECTION 11A**  
HORIZONTAL w/  
CONCEALED FASTENER  
SHEAR BLOCK

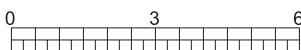


**SECTION 12**  
SILL

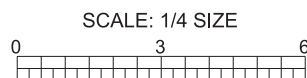
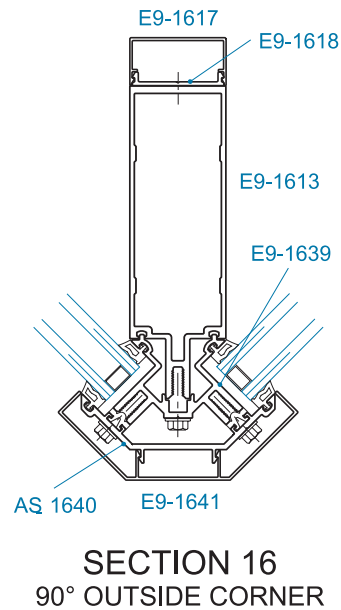
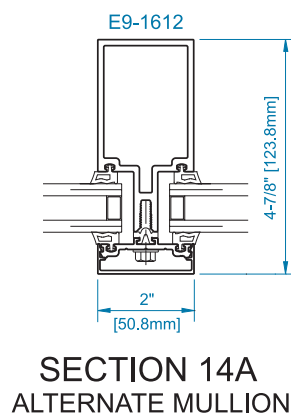
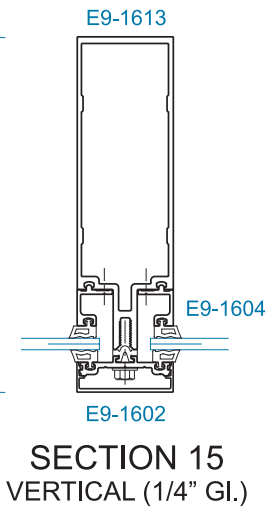
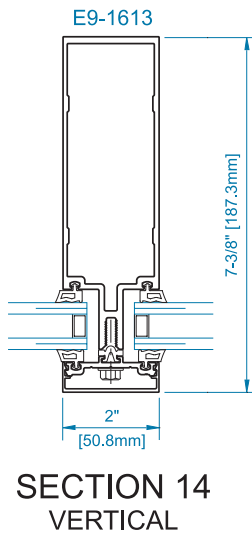
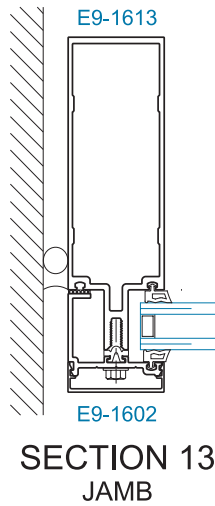
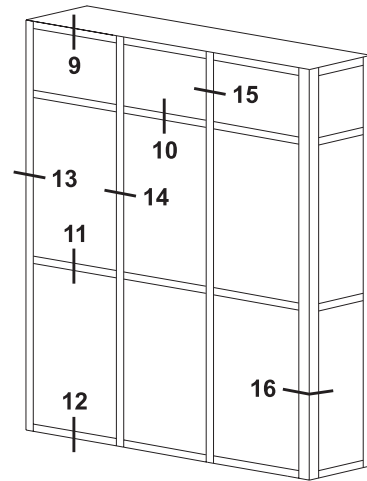


**SECTION 12A**  
2 PC. SILL w/  
CONCEALED FASTENER  
SHEAR BLOCK

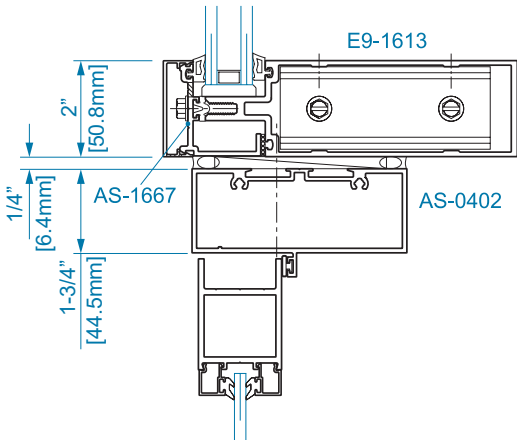
SCALE: 1/4 SIZE



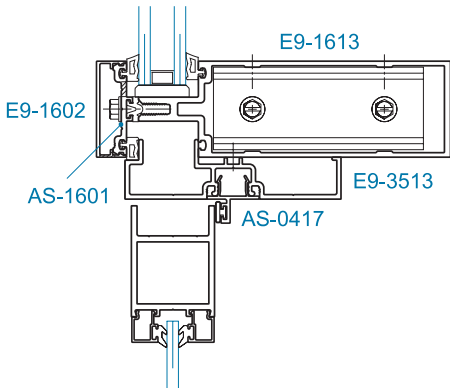
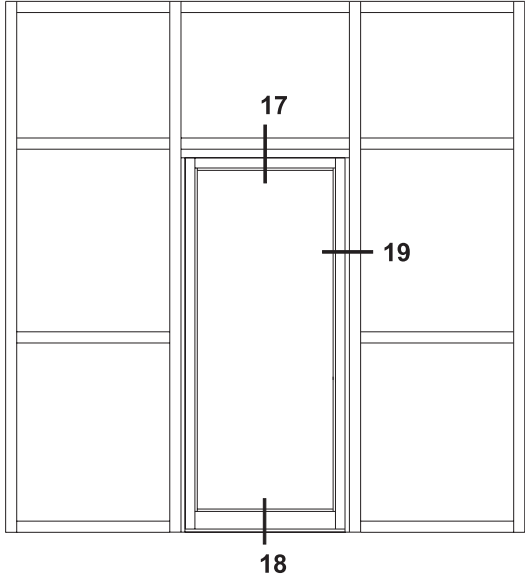
## YCW 752 Framing Members for 1" Glazing



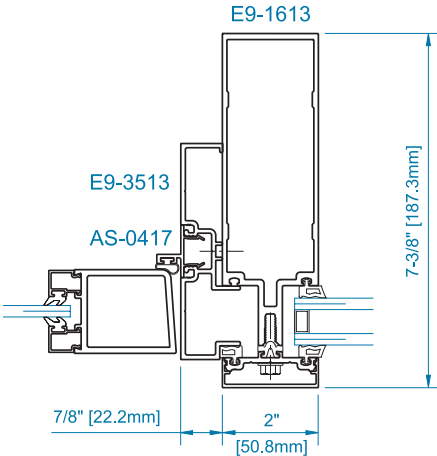
YCW 752 Door Framing Members for 1" Glazing



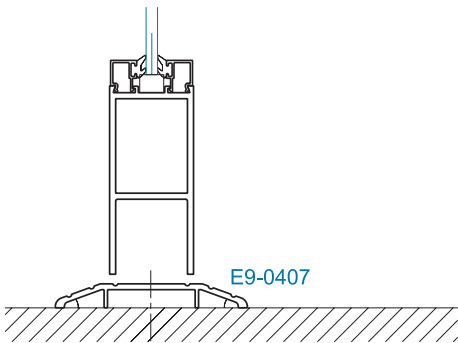
SECTION 17  
TRANSOM BAR



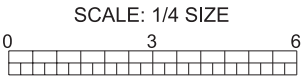
SECTION 17A  
OPTIONAL TRANSOM BAR  
(Limited Hardware Applications)



SECTION 19  
DOOR JAMB

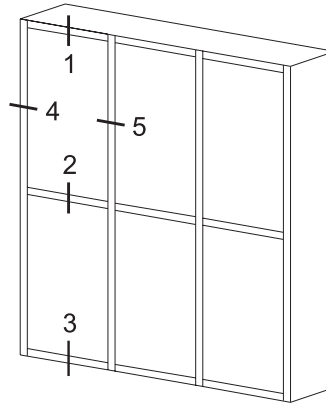
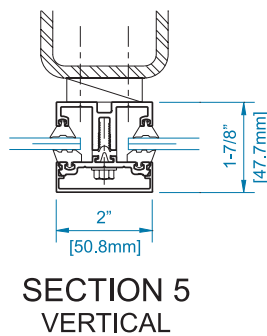
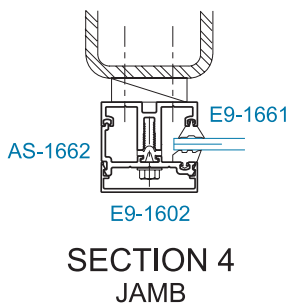
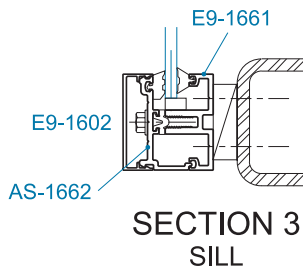
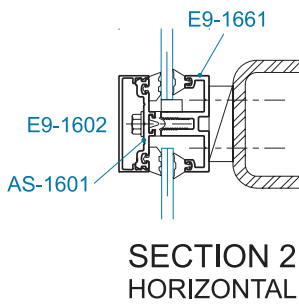
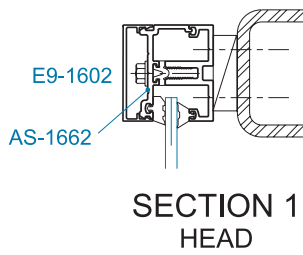


SECTION 18  
BOTTOM RAIL

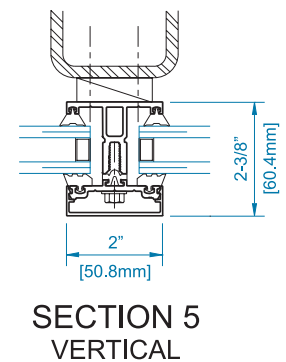
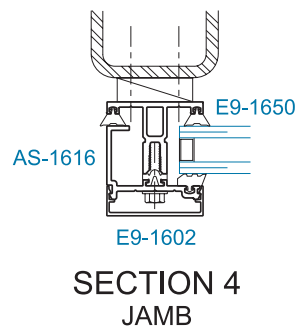
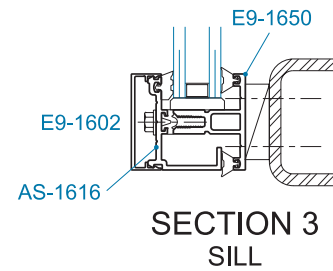
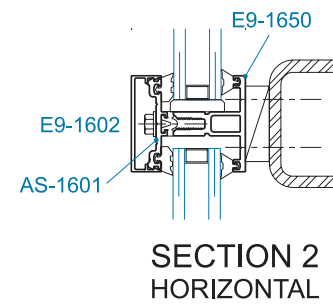
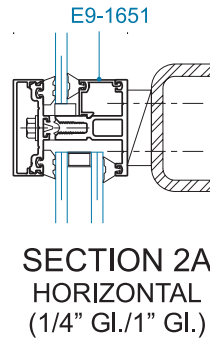
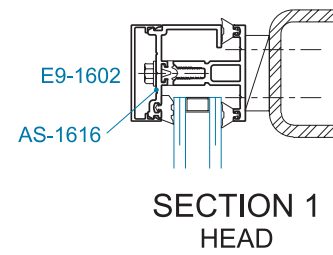


**YCW 752 Veneer Wall Framing Members**

**1/4" Glazing**



**1" Glazing**



SCALE: 1/4 SIZE

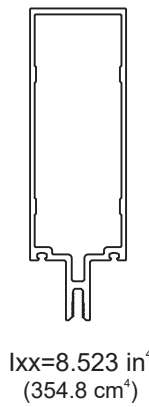
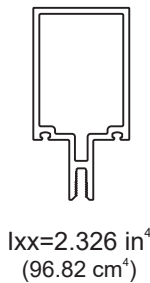
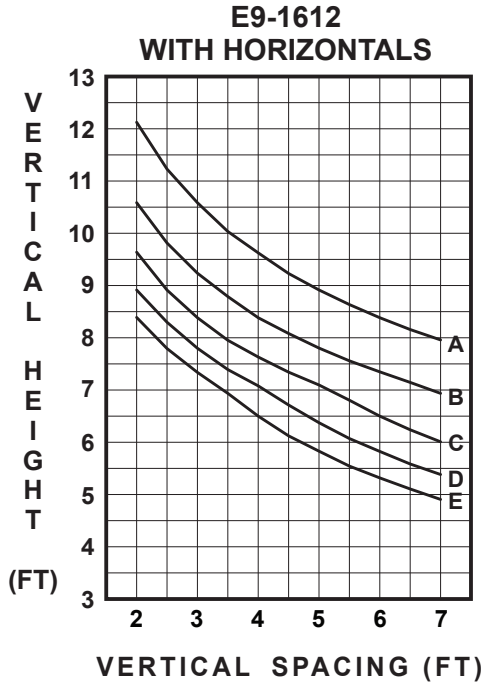


## WIND LOAD CHARTS FOR SINGLE SPAN APPLICATIONS

**DEFLECTION CRITERIA** AAMA TIR-A11 - L/175 or L/240 + 1/4" (6.4mm) - FOR SPANS GREATER THAN 13'-6" (4.1m) BUT LESS THAN 40'-0" (12.2m)  
 CODES AND SPECIFICATIONS MAY VARY, NO SINGLE LITE OF GLASS SHALL DEFLECT MORE THAN 3/4" (19.1mm)

**ALLOWABLE WIND LOAD STRESS**  
 YKK AP tested standard. Contact YKK AP for more information.

These charts include unbraced length analysis and are based off at least one horizontal being placed at the midpoint of the span.  
 For other applications, please contact YKK AP engineers at 1-866-955-2732.



- A=20 PSF (960 Pa)
- B=30 PSF (1440 Pa)
- C=40 PSF (1920 Pa)
- D=50 PSF (2390 Pa)
- E=60 PSF (2870 Pa)

